

# schaerer<sup>®</sup> axis

200/300 series



MOBILE OPERATING TABLES  
FOR ALL SURGICAL APPLICATIONS



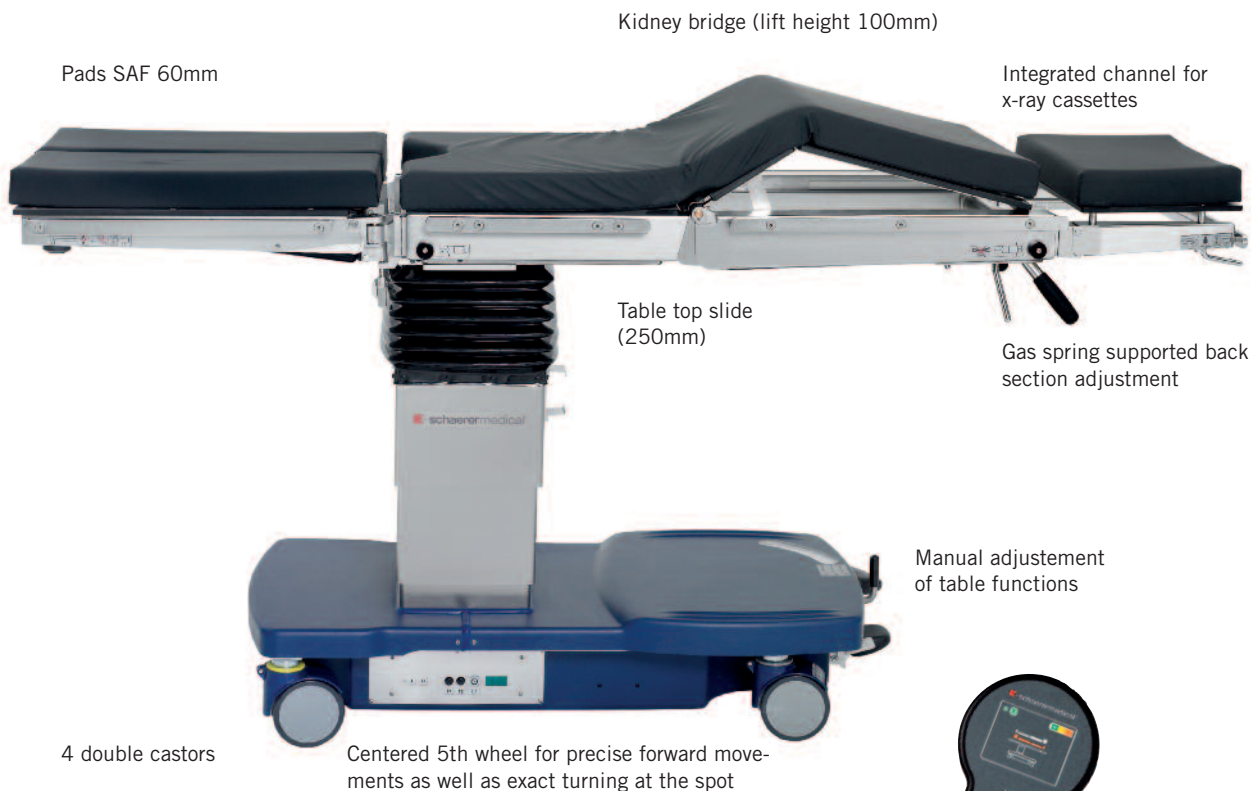
## schaerer® axis 200/300 series

### Mobile operating tables for all surgical disciplines

The product line schaeerer® axis 200/300 sets the introducing standard for professional and safe clinical and outpatient care giving for all surgical disciplines.

Starting with the manual **schaerer® axis 200** to the fully electro hydraulic **schaerer® axis 303EKS** you can choose out of 10 different models for your individual requirements. The following EKS-codes identifies the models by its functions:

- axis “E” models are electro hydraulic driven
- axis “K” models have an integrated kidney bridge (lift height 100mm)
- axis “S” models have an integrated sliding top (250mm)



All “E” models are equipped with the new ergonomic hand control.

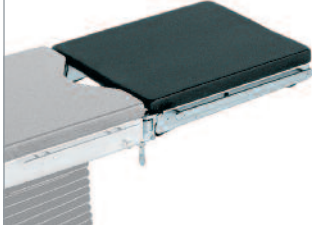


- Battery charge indicator
- Backlit for the use in darkened operating theatres
- 0-Level function (optional)
- Reverse mode

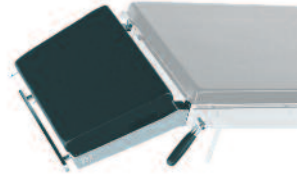
All tables can be individually equipped with the shown head & leg plates



**580360 Leg plate split**  
With pad 60 mm. Gas spring supported.



**580361 Leg plate one-piece**  
With pad 60 mm. Gas spring supported.



**580350 Head rest**  
With pad 60 mm. Simple adjustable, gas spring supported.



**580351 Head rest**  
With pad 60 mm. Double articulated joints, gas spring supported.

**Positions**

**Shoulder surgery**

Shoulder arthroscopy plate with adjustable side segments for optimal exposure and access to the shoulder. Gas spring supported movement for ergonomic beach chair position.



**Gynaecology / Urology**

Gynaecological and urological interventions with leg holders "Goepel" for flat and lithotomy positions, including seat plate extension for maximum C-arm access.

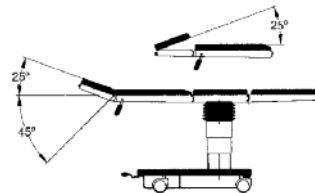
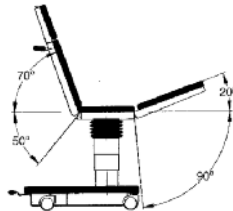
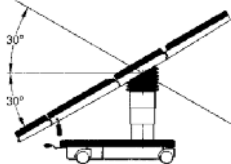
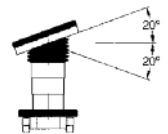
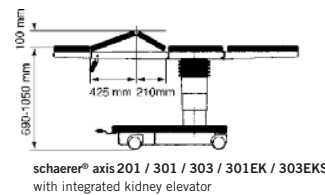
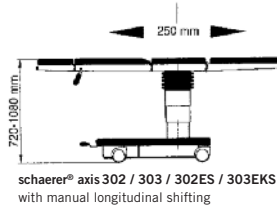
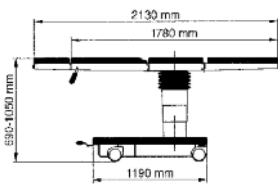


**Rectal surgery**

Rectum interventions with retroscopic roll and knee cradles for "Andrews" position.

## Technical data

Length	1140 mm (without head- and leg plates)	2130 mm (with head- and leg-plates)
Width of the table top	540 mm (without side rails)	590 mm (with side rails)
Diameter of the swivelling double castors	125 mm	
Height adjustment range without pad	690 - 1050 mm (Models without longitudinal shifting)	720 - 1080 mm (Models with longitudinal shifting)
Trendelenburg / Reverse Trendelenburg	30°	
Back plate adjustment	+70° / -50°	
Leg plate adjustment	+20° / -90°	
Lateral tilting right/left	20°	
Spread of split leg plates	55°	
Head plate adjustment	+25° / -45°	
Angle of head plate with double articulated joint (hinged)	25°	
Manual longitudinal shifting (Models 302, 303, 302ES, 303EKS)	250 mm	
Safe load capacity	185 kg	
Maximum weight capacity (without adjustment)	250 kg	
Power supply (E-Models)	230 V, 50 Hz (other voltages possible)	



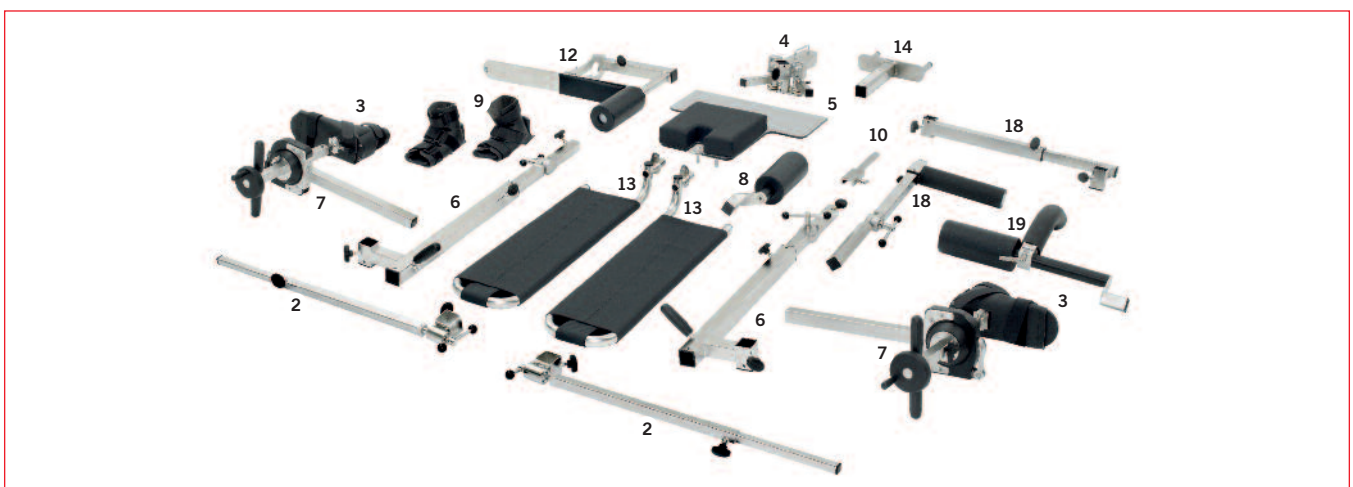
schaerer® axis Models	200	201	300	301	302	303	300E	301EK	302ES	303EKS
0-Level function	-	-	-	-	-	-	Optional	Optional	Optional	Optional
Electro hydraulic functions	-	-	-	-	-	-	■	■	■	■
Height adjustment (without pad)	690mm - 1050mm	690mm - 1050mm	690mm - 1050mm	690mm - 1050mm	720mm - 1080mm	720mm - 1080mm	690mm - 1050mm	690mm - 1050mm	720mm - 1080mm	720mm - 1080mm
Back plate up/down	+70° / -50°	+70° / -50°	+70° / -50°	+70° / -50°	+70° / -50°	+70° / -50°	+70° / -50°	+70° / -50°	+70° / -50°	+70° / -50°
Trendelenburg/Reverse Trendelenburg	30° / 30°	30° / 30°	30° / 30°	30° / 30°	30° / 30°	30° / 30°	30° / 30°	30° / 30°	30° / 30°	30° / 30°
Lateral tilt left/right	-	-	20° / 20°	20° / 20°	20° / 20°	20° / 20°	20° / 20°	20° / 20°	20° / 20°	20° / 20°
Flex / Reflex	230° / 110°	230° / 110°	230° / 110°	230° / 110°	230° / 110°	230° / 110°	230° / 110°	230° / 110°	230° / 110°	230° / 110°
Manual head plate adjustment	+25° / -45°	+25° / -45°	+25° / -45°	+25° / -45°	+25° / -45°	+25° / -45°	+25° / -45°	+25° / -45°	+25° / -45°	+25° / -45°
Manual leg plate adjustment	+20° / -90°	+20° / -90°	+20° / -90°	+20° / -90°	+20° / -90°	+20° / -90°	+20° / -90°	+20° / -90°	+20° / -90°	+20° / -90°
Integrated kidney elevator (manual)	-	■	-	■	-	■	-	■	-	■
Longitudinal shift 250mm (manual)	-	-	-	-	■	■	-	-	■	■
5 <sup>th</sup> wheel for precise directional stability	-	-	■	■	■	■	■	■	■	■
Max static load in horizontal position up to*	250kg	250kg	250kg	250kg	250kg	250kg	250kg	250kg	250kg	250kg
Safe working load up to*	185kg	185kg	185kg	185kg	185kg	185kg	185kg	185kg	185kg	185kg
Net weight with head and leg plate	160kg	160kg	180kg	180kg	190kg	190kg	210kg	210kg	220kg	220kg
Charging unit, 90 – 264V, 50 – 60Hz	-	-	-	-	-	-	■	■	■	■

\* The weight capacity may vary depending on the patient's orientation and position on the tabletop.

## Orthopaedic extension device

The user friendly extension device is suitable for all kind of lower limb fractures. An innovative ball clamping with integrated extension unit assists the surgeon in the exact adjustment of the surgical site for hip arthroscopy and in the precise repositioning of fractures of the lower extremities.

- Fast, simple and secure attaching of the device to the schaeerer® axis 200/300 series operating tables.
- Unobstructed access to the lower limbs for X-ray image intensifier.
- Well-devised accessories for comfortable and precise positioning of the patient.
- Disinfectant-proof stainless-steel construction.
- Transport trolley for storage and transportation of the extension device.



### Extension Device

<b>1</b>	Basic Extension Device	<b>580400</b>
	Including:	
<b>2</b>	2 x Extension bar support	
<b>3</b>	2 x Foot plates & traction boots for adults	
<b>4</b>	Mounting device	
<b>5</b>	Seat plate	
<b>6</b>	2 x Traction bars	
<b>7</b>	2 x Traction units	
<b>8</b>	Countertraction post	
<b>9</b>	2 x Foot plates & traction boots for paediatrics	<b>580410, 580411</b>
<b>10</b>	Side rail extension	<b>580407</b>
<b>11</b>	Traction Clamp, for «Kirschner» wire (without picture)	<b>580025</b>
<b>12</b>	Pelvis plaster adapter with pelvis support	<b>580422</b>

### Transportation, mounting

<b>13</b>	2 x Transfer leg plates	<b>580404</b>
<b>14</b>	Mounting arbour	<b>580402</b>
<b>15</b>	Mounting fixture for tables without longitudinal shift (without picture)	<b>580401</b>
<b>16</b>	Transport trolley for transportation and storage of the fully mounted extension device	<b>580408</b>
<b>17</b>	Transport trolley, modular	<b>580409</b>

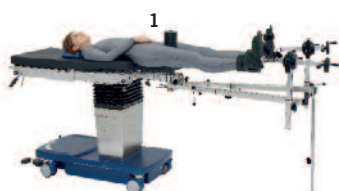
### Tibia Nailing

<b>18</b>	Traction device for tibial fractures	<b>580405</b>
-----------	--------------------------------------	---------------

### Lateral positioning

<b>19</b>	Countertraction post for lateral positioning	<b>580406</b>
-----------	--	---------------

Basic Extension device



Transport trolley



Transport trolley

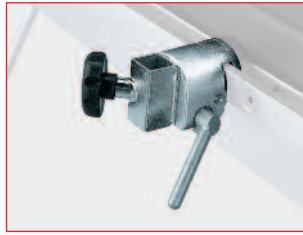


Tibia nailing

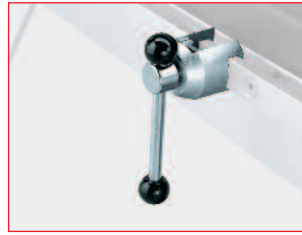




**580041 Attachment clamp**  
Swivel type, with quick lock, for poles Ø 16 - 18 mm.



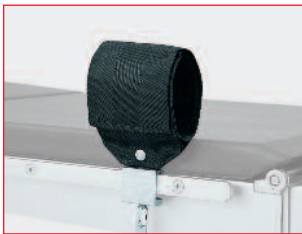
**580020 Attachment clamp**  
Non-swivel type, with quick lock, for square section poles 20 x 20 mm.



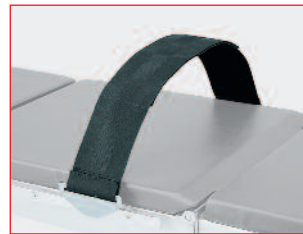
**580014 Attachment clamp**  
Non-swivel type, for square-section poles 10 x 25 mm, for poles Ø 16-18 mm.



**580040 Arm rest**  
With arm strap and attachment clamp. Adjustable up/down, laterally, height adjustable and swivelling through 180°, length 600 mm, width 150 mm.



**580043 Wristlet**  
With clamp and velcro fastener, washable.



**580045 Body restraint strap**  
With clamp and Velcro fastener, washable.



**580046 Infusion pole**  
Upper section with 4 hooks, with attachment clamp and ball-and-socket joint.



**580169 Anaesthetic frame**  
Height adjustable, without clamp.  
**90506 Radial setting clamp**  
**580168 Anaesthetic frame extension**  
For anaesthetic frame 580169, length 300 mm.



**580031 Holder for body support**  
Without clamp, allows double swivelling and horizontal as well as vertical adjustment of the supports, 580032 / 580034 / 580033.



**580032 Shoulder/lateral support**  
215 x 100 mm



**580034 Back/buttock support**  
200 x 120 mm



**580033 Pubis/sacrum/sternum support**  
85 x 85 mm



**580044 Wristlet**  
For attachment to anaesthetic frame, washable.



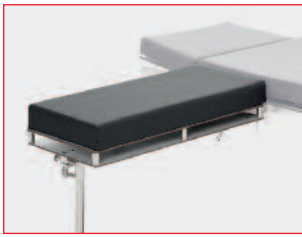
**580035 Lateral support**  
Simple version, with clamp.



**580036 Shoulder support (pair)**  
Without clamp, 2 antistatic pads (120 x 200 mm) and 2 attachment bars to adjust pads horizontally and vertically.  
**580020 Attachment clamp**  
(order 2 pieces)



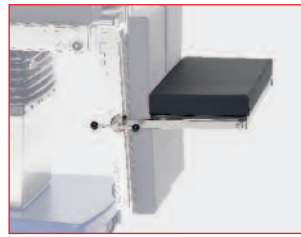
**580058 Cassette carrier**  
For cassettes up to 350 x 430 mm, telescopic insertion bar.



**580421 Arm/hand operating table**  
Radiolucent plastic board with covered foam pad, antistatic, X-ray cassette slot, 700 x 300 mm (W x D).



**580037 Rectoscopy/buttocks support**  
Without clamps, adjustable in width, with soft pad, for rectal positioning and spinal surgery.  
**580041 Attachment clamp**  
(order 2 pieces) or  
**90506 Rapid setting clamp**  
(order 2 pieces)



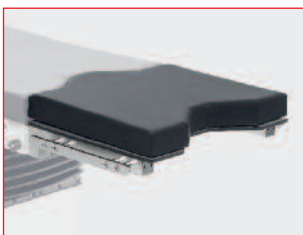
**580420 Knee/foot rest**  
For rectal and spinal surgeries with patient in knee/elbow position, serves also as foot rest for laparoscopic surgery, without clamps.  
**580014 Attachment clamp**  
(order 2 pieces)



**580425 Shoulder arthroscopy plate**  
Adjustable with gas spring assistance, with individually detachable lateral pads, pad 60 mm.  
**580163 U-shape head support**  
**580160** or **580159 Head plate adaptor**



**580086 Leg support (Goepel type, 1 piece)**  
With fastening strap, without attachment clamp.  
**580041 Attachment clamp**



**580365 Urological adapter**  
To extend the seat section by approx. 450mm, with cut-out for urological interventions.  
**580366 Gynaecological adapter (without illustration).**  
To extend the seat section by approx. 285 mm for gynaecological and urological interventions.



**580077 Swivel-mounted rinsing basin**  
With holder, inclusive attachment clamp.  
**580078 TUR sieve**  
Stainless steel for basin 580077.



**580164 Universal adapter**  
Suitable for head plate adaptors and Doro<sup>®</sup> headrest systems.



**580161 Wrist hand support**  
Suitable for horseshoe-shaped head rests.  
**580157 Horseshoe shaped head rest**  
One piece, with pad.  
**580160 Head plate adapter**  
With 3 joints.



**580158 Horseshoe shaped head rest**  
Two pieces, with pad.  
**580159 Head plate adapter**  
Without joints.



**580151 Humerus counter traction post**  
**90506 Radial setting clamp**



**580150 Humerus positioning traction device w/o Weinberger hand traction device**  
**90506 Radial setting clamp**



**580152 Weinberger hand traction device**



**580085 Foot control**  
Only for "e" models.

**Schaerer Medical AG**

Erlenauweg 17

CH-3110 Münsingen

Tel. +41 31 720 22 00

Fax +41 31 720 22 30

[info@schaerermedical.ch](mailto:info@schaerermedical.ch)

[www.schaerermedical.ch](http://www.schaerermedical.ch)