

schaerer[®] axis

200/300 series



MOBILE OPERATING TABLES
FOR ALL SURGICAL APPLICATIONS



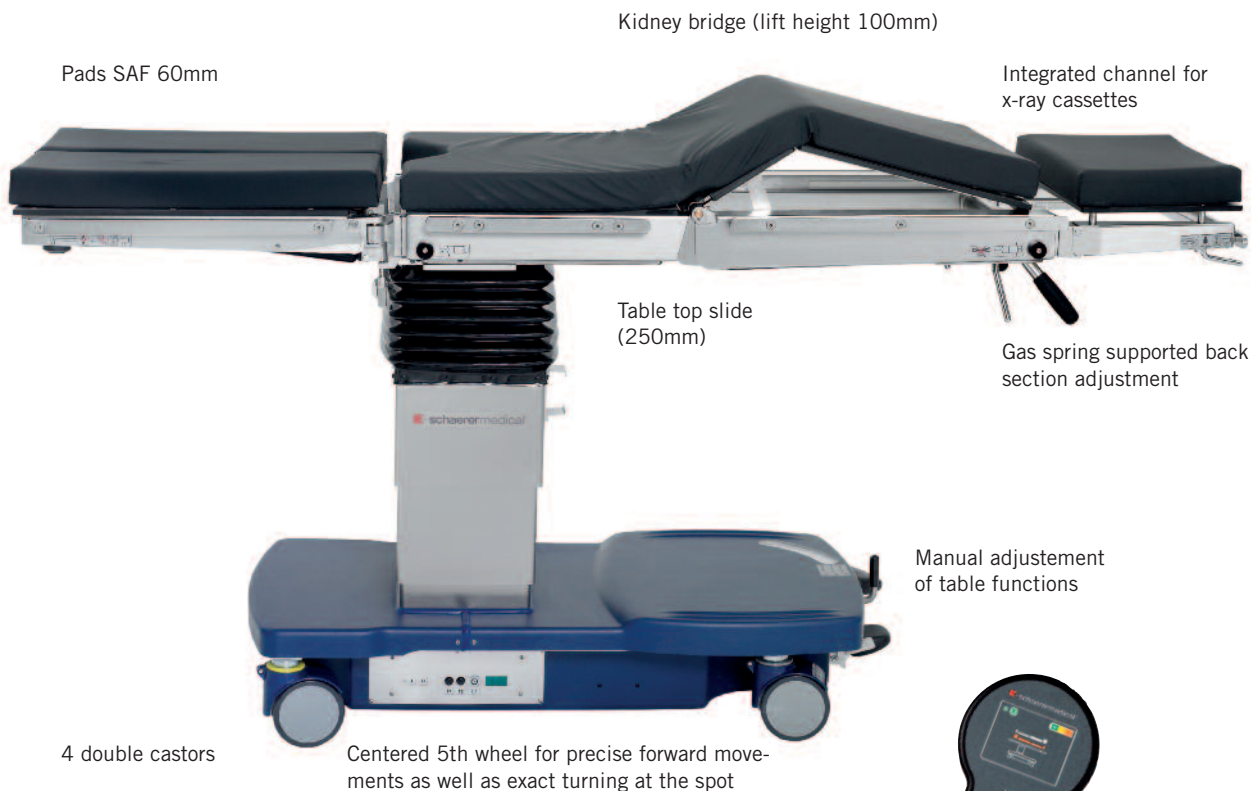
schaerer® axis 200/300 series

Mobile operating tables for all surgical disciplines

The product line schaeerer® axis 200/300 sets the introducing standard for professional and safe clinical and outpatient care giving for all surgical disciplines.

Starting with the manual **schaerer® axis 200** to the fully electro hydraulic **schaerer® axis 303EKS** you can choose out of 10 different models for your individual requirements. The following EKS-codes identifies the models by its functions:

- axis “E” models are electro hydraulic driven
- axis “K” models have an integrated kidney bridge (lift height 100mm)
- axis “S” models have an integrated sliding top (250mm)



All “E” models are equipped with the new ergonomic hand control.

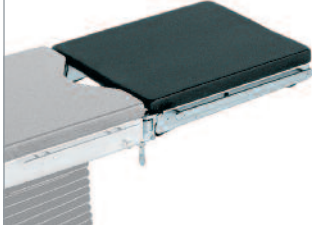


- Battery charge indicator
- Backlit for the use in darkened operating theatres
- 0-Level function (optional)
- Reverse mode

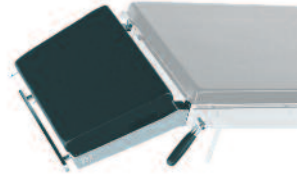
All tables can be individually equipped with the shown head & leg plates



580360 Leg plate split
With pad 60 mm. Gas spring supported.



580361 Leg plate one-piece
With pad 60 mm. Gas spring supported.



580350 Head rest
With pad 60 mm. Simple adjustable, gas spring supported.



580351 Head rest
With pad 60 mm. Double articulated joints, gas spring supported.

Positions

Shoulder surgery

Shoulder arthroscopy plate with adjustable side segments for optimal exposure and access to the shoulder. Gas spring supported movement for ergonomic beach chair position.



Gynaecology / Urology

Gynaecological and urological interventions with leg holders "Goepel" for flat and lithotomy positions, including seat plate extension for maximum C-arm access.

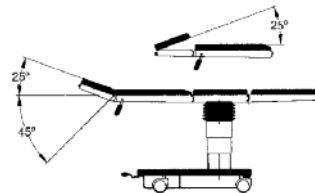
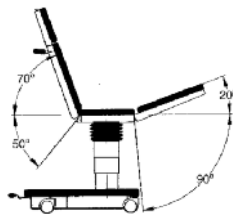
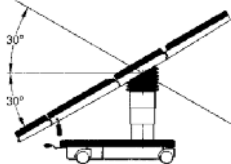
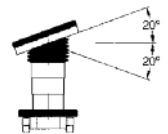
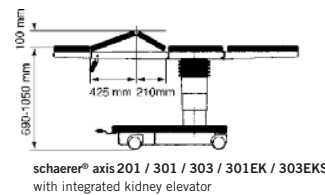
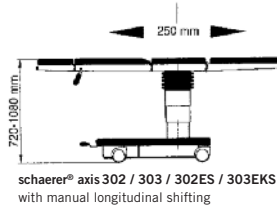
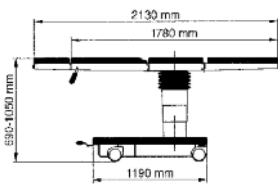


Rectal surgery

Rectum interventions with retroscopic roll and knee cradles for "Andrews" position.

Technical data

Length	1140 mm (without head- and leg plates)	2130 mm (with head- and leg-plates)
Width of the table top	540 mm (without side rails)	590 mm (with side rails)
Diameter of the swivelling double castors	125 mm	
Height adjustment range without pad	690 - 1050 mm (Models without longitudinal shifting)	720 - 1080 mm (Models with longitudinal shifting)
Trendelenburg / Reverse Trendelenburg	30°	
Back plate adjustment	+70° / -50°	
Leg plate adjustment	+20° / -90°	
Lateral tilting right/left	20°	
Spread of split leg plates	55°	
Head plate adjustment	+25° / -45°	
Angle of head plate with double articulated joint (hinged)	25°	
Manual longitudinal shifting (Models 302, 303, 302ES, 303EKS)	250 mm	
Safe load capacity	185 kg	
Maximum weight capacity (without adjustment)	250 kg	
Power supply (E-Models)	230 V, 50 Hz (other voltages possible)	



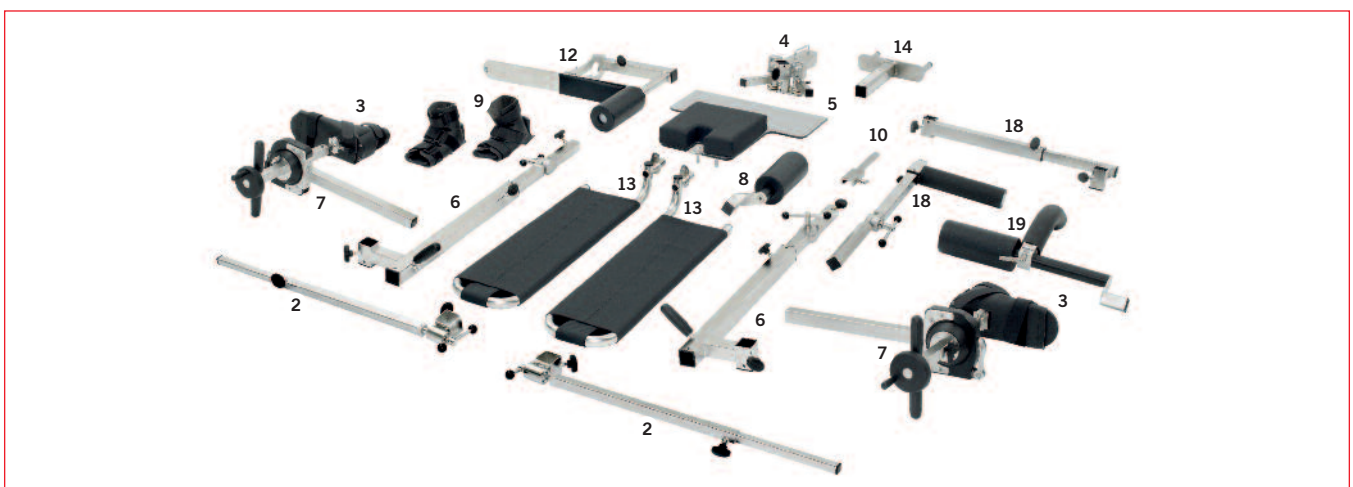
schaerer® axis Models	200	201	300	301	302	303	300E	301EK	302ES	303EKS
0-Level function	-	-	-	-	-	-	Optional	Optional	Optional	Optional
Electro hydraulic functions	-	-	-	-	-	-	■	■	■	■
Height adjustment (without pad)	690mm - 1050mm	690mm - 1050mm	690mm - 1050mm	690mm - 1050mm	720mm - 1080mm	720mm - 1080mm	690mm - 1050mm	690mm - 1050mm	720mm - 1080mm	720mm - 1080mm
Back plate up/down	+70° / -50°	+70° / -50°	+70° / -50°	+70° / -50°	+70° / -50°	+70° / -50°	+70° / -50°	+70° / -50°	+70° / -50°	+70° / -50°
Trendelenburg/Reverse Trendelenburg	30° / 30°	30° / 30°	30° / 30°	30° / 30°	30° / 30°	30° / 30°	30° / 30°	30° / 30°	30° / 30°	30° / 30°
Lateral tilt left/right	-	-	20° / 20°	20° / 20°	20° / 20°	20° / 20°	20° / 20°	20° / 20°	20° / 20°	20° / 20°
Flex / Reflex	230° / 110°	230° / 110°	230° / 110°	230° / 110°	230° / 110°	230° / 110°	230° / 110°	230° / 110°	230° / 110°	230° / 110°
Manual head plate adjustment	+25° / -45°	+25° / -45°	+25° / -45°	+25° / -45°	+25° / -45°	+25° / -45°	+25° / -45°	+25° / -45°	+25° / -45°	+25° / -45°
Manual leg plate adjustment	+20° / -90°	+20° / -90°	+20° / -90°	+20° / -90°	+20° / -90°	+20° / -90°	+20° / -90°	+20° / -90°	+20° / -90°	+20° / -90°
Integrated kidney elevator (manual)	-	■	-	■	-	■	-	■	-	■
Longitudinal shift 250mm (manual)	-	-	-	-	■	■	-	-	■	■
5 th wheel for precise directional stability	-	-	■	■	■	■	■	■	■	■
Max static load in horizontal position up to*	250kg	250kg	250kg	250kg	250kg	250kg	250kg	250kg	250kg	250kg
Safe working load up to*	185kg	185kg	185kg	185kg	185kg	185kg	185kg	185kg	185kg	185kg
Net weight with head and leg plate	160kg	160kg	180kg	180kg	190kg	190kg	210kg	210kg	220kg	220kg
Charging unit, 90 – 264V, 50 – 60Hz	-	-	-	-	-	-	■	■	■	■

* The weight capacity may vary depending on the patient's orientation and position on the tabletop.

Orthopaedic extension device

The user friendly extension device is suitable for all kind of lower limb fractures. An innovative ball clamping with integrated extension unit assists the surgeon in the exact adjustment of the surgical site for hip arthroscopy and in the precise repositioning of fractures of the lower extremities.

- Fast, simple and secure attaching of the device to the schaeerer® axis 200/300 series operating tables.
- Unobstructed access to the lower limbs for X-ray image intensifier.
- Well-devised accessories for comfortable and precise positioning of the patient.
- Disinfectant-proof stainless-steel construction.
- Transport trolley for storage and transportation of the extension device.



Extension Device

1	Basic Extension Device	580400
	Including:	
2	2 x Extension bar support	
3	2 x Foot plates & traction boots for adults	
4	Mounting device	
5	Seat plate	
6	2 x Traction bars	
7	2 x Traction units	
8	Countertraction post	
9	2 x Foot plates & traction boots for paediatrics	580410, 580411
10	Side rail extension	580407
11	Traction Clamp, for «Kirschner» wire (without picture)	580025
12	Pelvis plaster adapter with pelvis support	580422

Transportation, mounting

13	2 x Transfer leg plates	580404
14	Mounting arbour	580402
15	Mounting fixture for tables without longitudinal shift (without picture)	580401
16	Transport trolley for transportation and storage of the fully mounted extension device	580408
17	Transport trolley, modular	580409

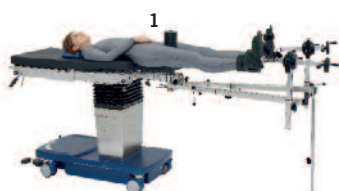
Tibia Nailing

18	Traction device for tibial fractures	580405
-----------	--------------------------------------	---------------

Lateral positioning

19	Countertraction post for lateral positioning	580406
-----------	--	---------------

Basic Extension device



Transport trolley



Transport trolley

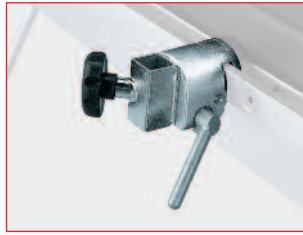


Tibia nailing

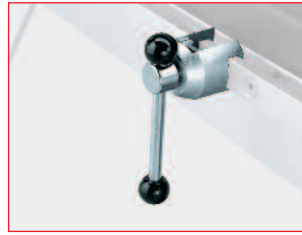




580041 Attachment clamp
Swivel type, with quick lock, for poles Ø 16 - 18 mm.



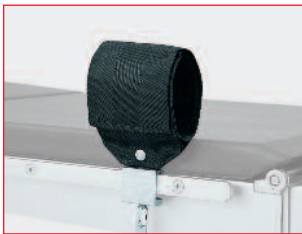
580020 Attachment clamp
Non-swivel type, with quick lock, for square section poles 20 x 20 mm.



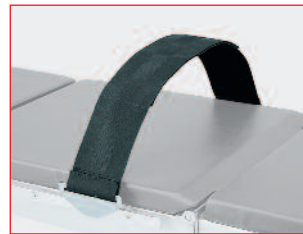
580014 Attachment clamp
Non-swivel type, for square-section poles 10 x 25 mm, for poles Ø 16-18 mm.



580040 Arm rest
With arm strap and attachment clamp. Adjustable up/down, laterally, height adjustable and swivelling through 180°, length 600 mm, width 150 mm.



580043 Wristlet
With clamp and velcro fastener, washable.



580045 Body restraint strap
With clamp and Velcro fastener, washable.



580046 Infusion pole
Upper section with 4 hooks, with attachment clamp and ball-and-socket joint.



580169 Anaesthetic frame
Height adjustable, without clamp.
90506 Radial setting clamp
580168 Anaesthetic frame extension
For anaesthetic frame 580169, length 300 mm.



580031 Holder for body support
Without clamp, allows double swivelling and horizontal as well as vertical adjustment of the supports, 580032 / 580034 / 580033.



580032 Shoulder/lateral support
215 x 100 mm



580034 Back/buttock support
200 x 120 mm



580033 Pubis/sacrum/sternum support
85 x 85 mm



580044 Wristlet
For attachment to anaesthetic frame, washable.



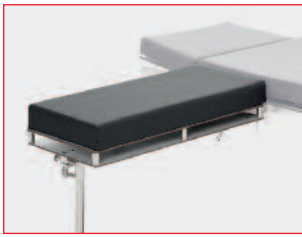
580035 Lateral support
Simple version, with clamp.



580036 Shoulder support (pair)
Without clamp, 2 antistatic pads (120 x 200 mm) and 2 attachment bars to adjust pads horizontally and vertically.
580020 Attachment clamp
(order 2 pieces)



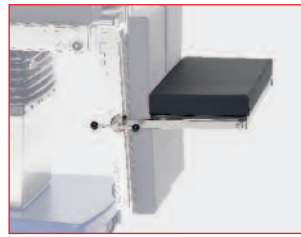
580058 Cassette carrier
For cassettes up to 350 x 430 mm, telescopic insertion bar.



580421 Arm/hand operating table
Radiolucent plastic board with covered foam pad, antistatic, X-ray cassette slot, 700 x 300 mm (W x D).



580037 Rectoscopy/buttocks support
Without clamps, adjustable in width, with soft pad, for rectal positioning and spinal surgery.
580041 Attachment clamp
(order 2 pieces) or
90506 Rapid setting clamp
(order 2 pieces)



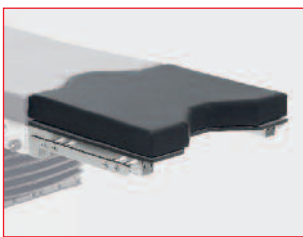
580420 Knee/foot rest
For rectal and spinal surgeries with patient in knee/elbow position, serves also as foot rest for laparoscopic surgery, without clamps.
580014 Attachment clamp
(order 2 pieces)



580425 Shoulder arthroscopy plate
Adjustable with gas spring assistance, with individually detachable lateral pads, pad 60 mm.
580163 U-shape head support
580160 or 580159 Head plate adaptor



580086 Leg support (Goepel type, 1 piece)
With fastening strap, without attachment clamp.
580041 Attachment clamp



580365 Urological adapter
To extend the seat section by approx. 450mm, with cut-out for urological interventions.
580366 Gynaecological adapter (without illustration).
To extend the seat section by approx. 285 mm for gynaecological and urological interventions.



580077 Swivel-mounted rinsing basin
With holder, inclusive attachment clamp.
580078 TUR sieve
Stainless steel for basin 580077.



580164 Universal adapter
Suitable for head plate adaptors and Doro[®] headrest systems.



580161 Wrist hand support
Suitable for horseshoe-shaped head rests.
580157 Horseshoe shaped head rest
One piece, with pad.
580160 Head plate adapter
With 3 joints.



580158 Horseshoe shaped head rest
Two pieces, with pad.
580159 Head plate adapter
Without joints.



580151 Humerus counter traction post
90506 Radial setting clamp



580150 Humerus positioning traction device w/o Weinberger hand traction device
90506 Radial setting clamp



580152 Weinberger hand traction device



580085 Foot control
Only for "e" models.

Schaerer Medical AG

Erlenauweg 17

CH-3110 Münsingen

Tel. +41 31 720 22 00

Fax +41 31 720 22 30

info@schaerermedical.ch

www.schaerermedical.ch