



Kenex

**Lower body table shields
& top shields**

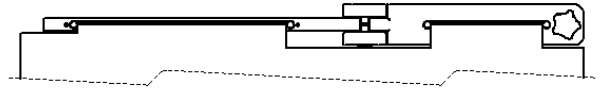
'E' Range

Specifications & ordering information
Issue 8

> Range details – Shield configurations

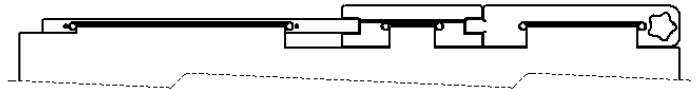
The Kenex range of lower body protection detailed in this document is divided into four basic configurations, each supplied with a 0.5 mm Pb protective curtain. Optional protective top shields are included or can be purchased separately (as shown in the table on page 6).

78 cm wide 312/E-005, -006



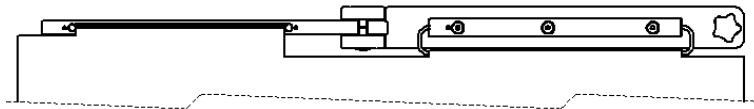
Consists of:
1 x attachment bracket
1 x central self-adjusting friction pivot
1 x pivotal arm

92 cm wide 312/E-010, -011, -012, -013



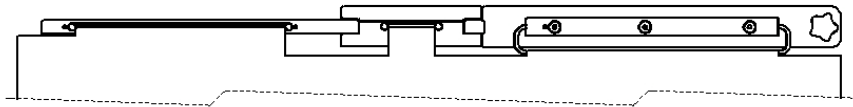
Consists of:
1 x attachment bracket
1 x central self-adjusting friction joint
1 x pivotal arm

100 cm wide 312/E-015, -016



Consists of:
1 x attachment bracket
1 x central self-adjusting friction pivot
1 x pivotal arm
1 x 35 cm long rail for equipment controls – 25 mm high x 10 mm thick
(7.7 mm thick available – add '/8' to stock code)

114 cm wide 312/E-020, -021, -022, -023



Consists of:
1 x 51 cm attachment bracket
1 x 17 cm central self-adjusting friction joint
1 x 44 cm pivotal arm
1 x 35 cm long rail for equipment controls – 25 mm high x 10 mm thick
(7.7 mm thick available – add '/8' to stock code)

> General information

These lower body shields substantially reduce exposure to scatter radiation emanating from the table or patient's body. The shields consist of a lightweight and durable structure, with an enhanced double friction joint or single friction pivot, and pivotal arm supporting a flexible 0.5 mm Pb lead curtain. Optional semi-flexible top shields provide additional protection to the upper body.

- All shields easily mount to either side of the table allowing the pivotal arm to always face the head end.
- An attachment bracket slides onto a 25 mm high tableside accessory rail (maximum 11 mm thick). Models with stock codes -005, -006, -010, -011, -012, & -013 can be quickly adjusted to fit either a 25 mm high or 29 mm tableside accessory rail.
- All shields have an automatic wear adjustment facility ensuring accurate joint friction preventing unwanted curtain movement even when the table is tilted in any direction.
- The suspended curtain forms a single 'safe zone of occupancy' for the Radiologist (or Cardiologist).
- The curtain forms around an under table x-ray tube without impeding movement.

When used in conjunction with Kenex ceiling mounted systems, both upper & lower body protection meet to provide an effective & easy to use barrier to scatter radiation.



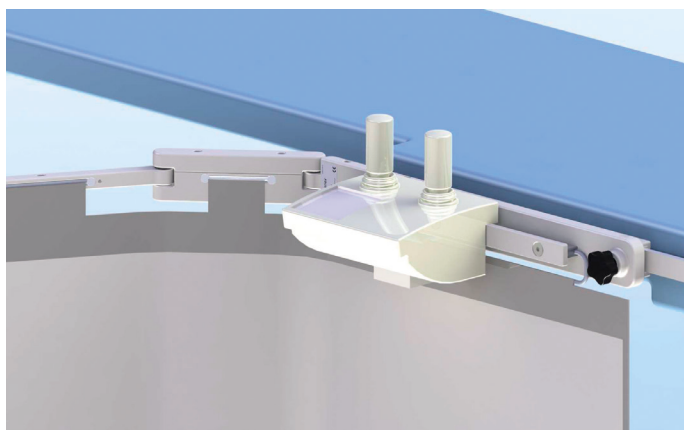
312/E-021
with two optional
27 cm wide tops

Key features

Integrated rail for equipment controls

Shields -015, -016, -020, -021, -022 & -023 are supplied with a 35 cm long integrated accessory rail for the attachment of equipment controls that would otherwise be located on the tableside. This space saving feature ensures controls are always positioned close to the user, and enables a larger zone of protection to be created.

Rails with a 10 x 25 mm section are supplied as standard. Add '/8' to these stock codes to substitute for a 7.7 x 25 mm alternative.



Self adjusting central link

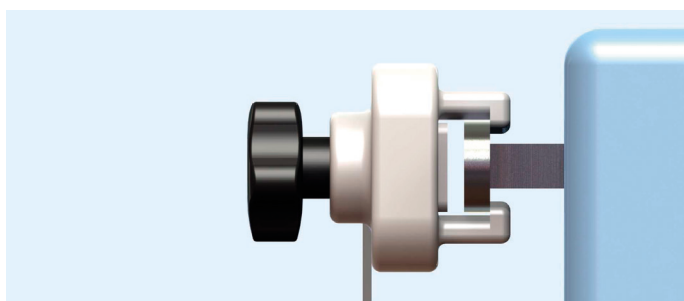
All shields have either of the two links shown. The amount of friction at the pivots is initially set to prevent unwanted movement. An internal 'maintenance free' mechanism maintains the friction setting, thus extending the shields working life.



Rail width adjustment

All shields can be securely attached to tableside equipment control rails up to 11 mm thick x 25 mm high. Shields -005, -006, -010, -011, -012, & -013 can be configured on-site to fit either 25 mm or 29 mm high tableside rails.

(Other rail sizes can be accommodated via special order).



Handle collar

The handle used on all shields is manufactured from high impact glass re-enforced plastic, and is protected from damage by a solid collar which encircles the handle shaft.



Pivots

Internal 10 mm diameter stainless steel dowels securely hold the shield components in place and provide stable pivot points. They provide strength against high dynamic loads and ensure lasting performance.



Curtain construction

The flexible curtain suspended from each shield provides 0.5 mm Pb protection. It consists of a flexible inner layer with a durable outer covering bonded to it. This results in an extremely strong, supple, easy to clean curtain which cannot delaminate.

All shields are supplied with a curtain which easily forms around a C-Arm without impeding C-Arm movement.

Alternative construction

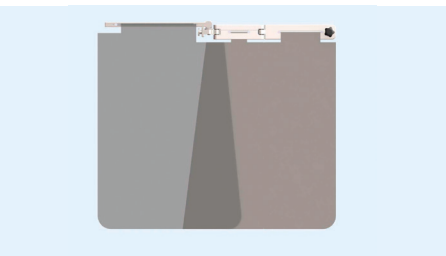
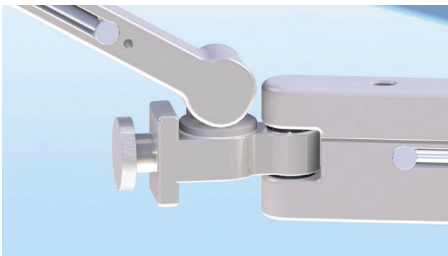
Shields with curtains made using three overlapping panels are available to special order – Add 'P' to the end of the required stock code.



Collision resistant

Shields 312/E-013 & -023 are fitted with a patented device enabling upward movement of the pivotal arm. Some acute C-Arm angulations can mean potential or actual collision with a table mounted shield. The collision resistant link ensures neither the C-Arm nor shield sustains damage, and that medical procedures are not interrupted.

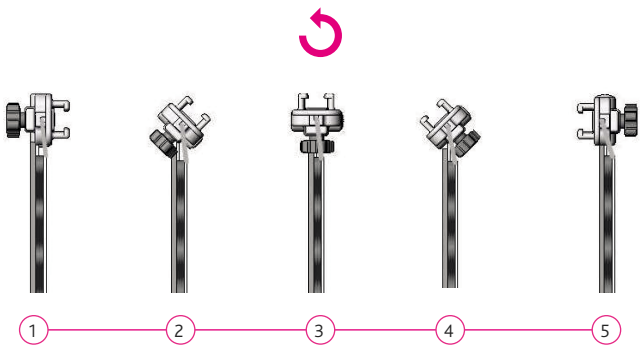
These shields are fitted with two separate curtains, manufactured with overlapping angled sides as shown. This feature helps maintain protection during upward movement of the pivotal arm.



Shown with curtains removed

Unique set-up process

All models can be easily and quickly attached to either the right or left side of a table and can be switched from one side to the other if required.

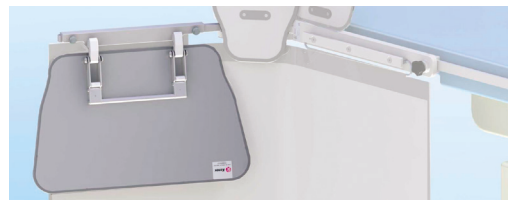


Optional top shields and wall racks

Kenex top shields are manufactured using the same 0.5 mm Pb protective material as the suspended curtains of the main shield. They include a flexible plastic material that enables them to stand 25 cm above the tableside rail, and provide additional higher and wider protection to the user. Their unique shape (wider at the top) ensures that no gaps develop as the adjacent tops are pushed towards the patient during procedures. A full list of tops and main shields is shown on page 6.

312/DS/3.33 – Fold-down top 57 cm wide

Included on models -012 & -022, this 57 cm wide top can be quickly folded away to aid patient access without the need to remove and locate the top elsewhere.



312/DS/3.32 – Lift-off top 57 cm wide

Included on models -006, -011, -016 & -021, this 57 cm wide top can be easily attached or removed from the main shield as required. Solid stainless steel locating pins ensure the top remains in position during use. Shields -013 & -023 use a similar top (312/DS/3.32/3).



312/DS/3.30 – Lift-off top 27 cm wide

Located on a 17 cm wide central link (or additionally on a 29 cm attachment bracket), this 27 cm wide top can be easily lifted from the main shield as required and provides additional user protection when used in combination with a 57 cm top. Made from the same materials as the 57 cm top.



312/DS/3.41 – Lift-off top 27 cm wide (short)*

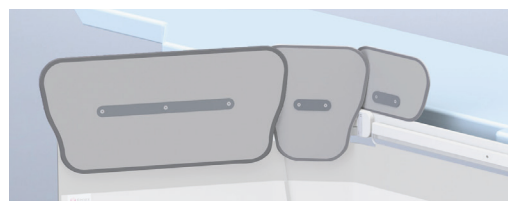
The short 27 cm wide top fits onto the 51 cm long attachment bracket of shields with an integral 35 cm long rail and is used in conjunction with both a 57 cm top (lift off or fold-down) & a full height 27 cm top. Use of all three tops provides maximum protection above the table top.



*(Manufactured shorter to avoid rail equipment controls).

312/E-024 – Reduced height set

Set of three reduced height lift-off top shields. Height 15 cm above accessory rail (10 cm less than the shields above).



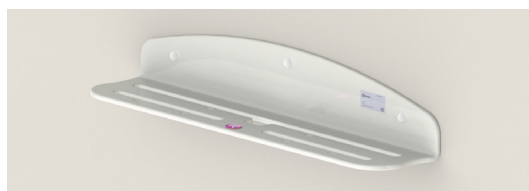
Wall racks for table mounted lower body shields

312/W-LB
Wall rack for a lower body shield.

312/W-TOP
Wall rack for 1 x 57 cm wide top shield and 2 x 27 cm wide top shields (excluding fold down).



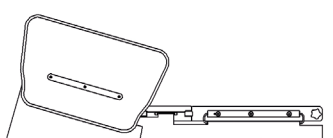
312/W-LB



312/W-TOP



312/W-TOP (above)
312/W-LB (below)

Model	Standard configuration	Collision resistant link & 57 cm Lift-off top	57 cm Fold-down top 312/DS/3.33	57 cm Lift-off top 312/DS/3.32	27 cm Lift-off top 312/DS/3.30	27 cm Lift-off top (short) 312/DS/3.41
312/E-005			○	○	○	
312/E-006			○	●	○	
312/E-010			○	○	● X2	
312/E-011			○	●	● X2	
312/E-012			●	○	● X2	
312/E-013		●			● X2	
312/E-015			○	○		○
312/E-016			○	●		○
312/E-020			○	○	○	○
312/E-021			○	●	○	○
312/E-022			●	○	○	○
312/E-023		●			○	○

○ compatible / optional extra

● X2 two can be fitted

● included with shield

Accessory rails for equipment controls:

-015, -016, -020, -021, -022, -023 are fitted with a 10 x 25 mm section rail. For an 7.7 mm thick rail, add '8' to the stock code e.g. 312/E-020/8 (1)

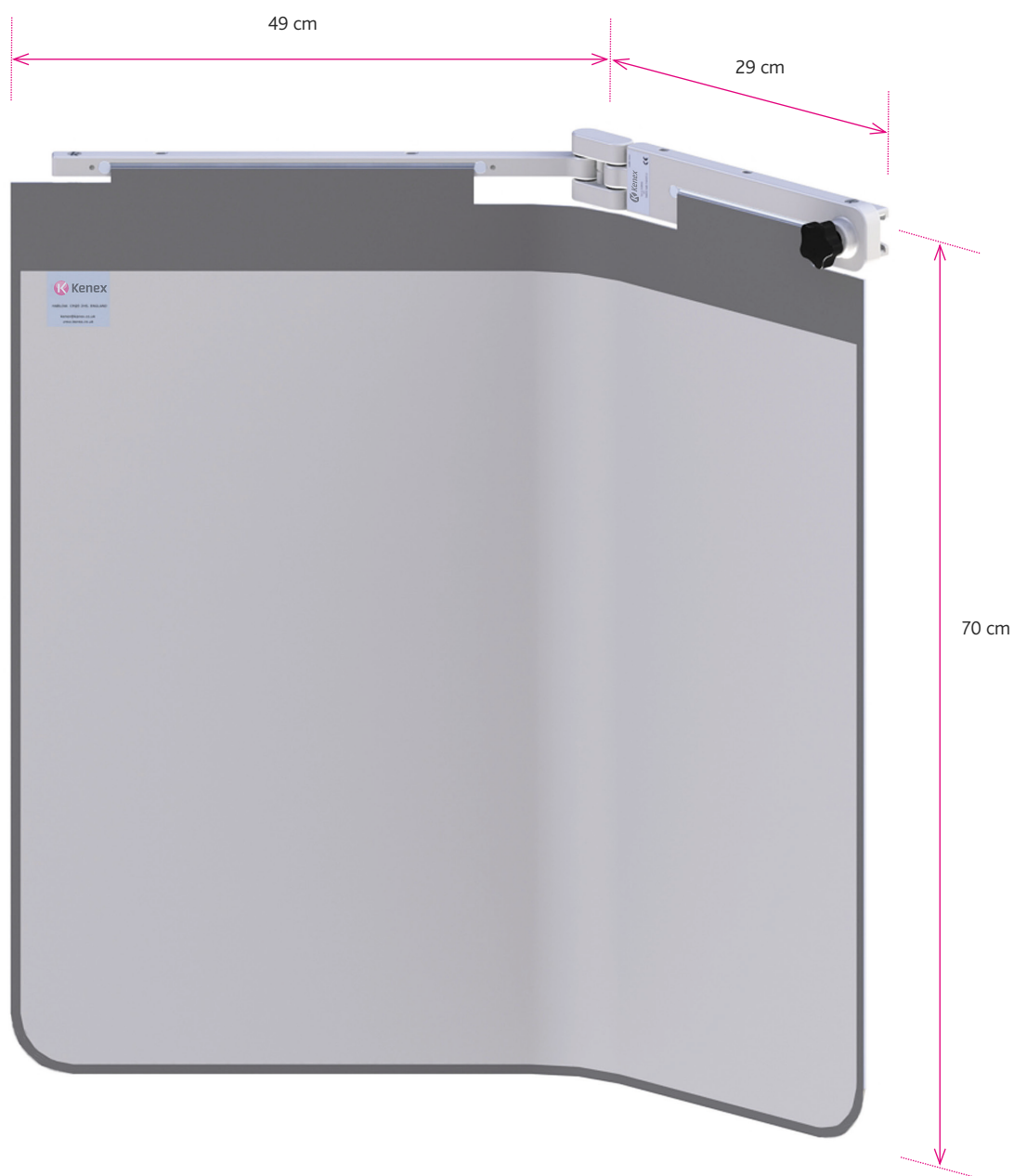
Sectional protective curtain:

All shields (except -013 & -023) are fitted with a single piece curtain. For a three panel configuration, add 'P' to the stock code e.g. 312/E-020/P (1)

(1) For shields requiring an 8 mm rail & three panel curtain, add '8P' to the stock code e.g. 312/E-020/8P

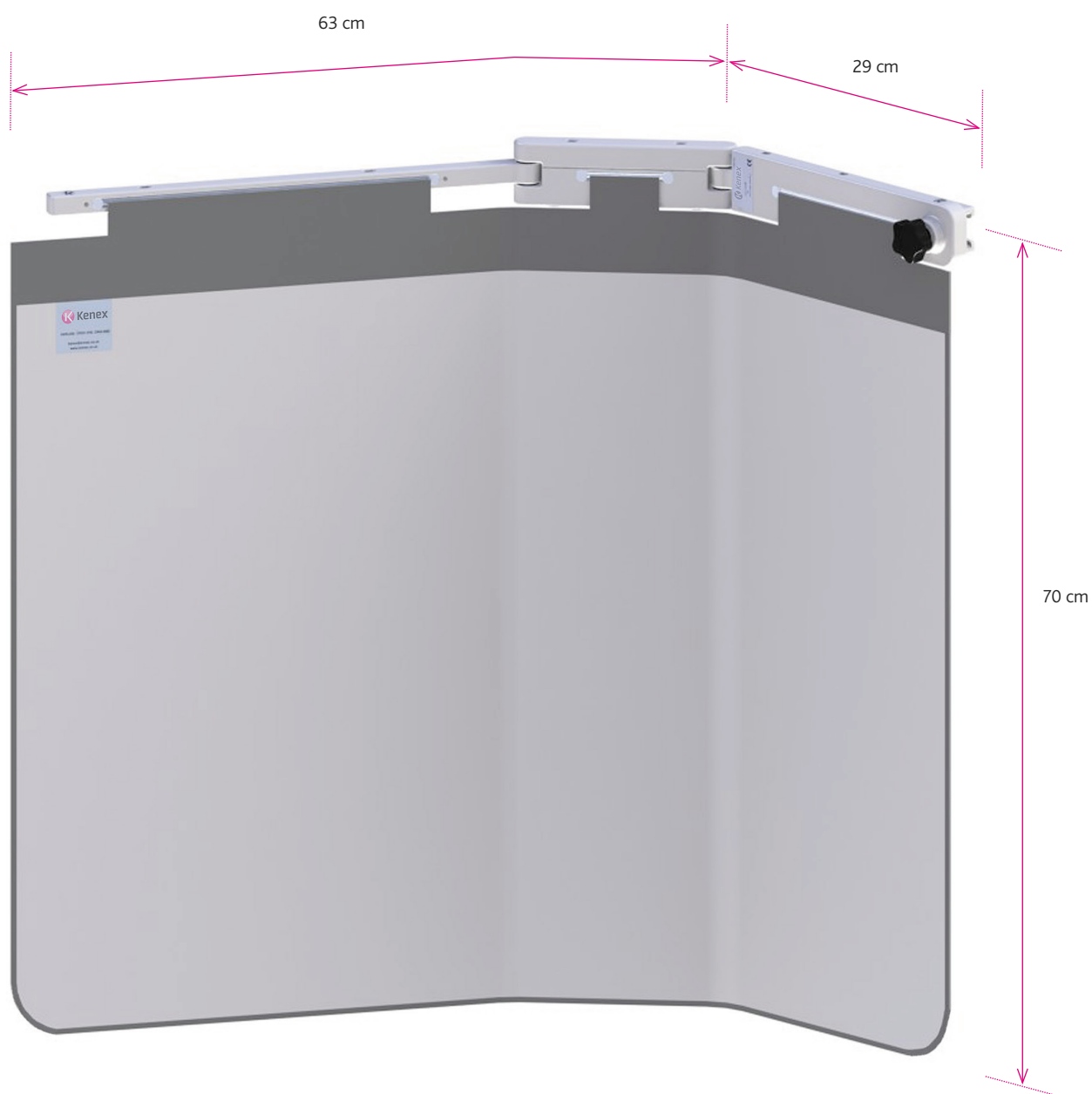
> 312/E-005, -006 Dimensions

Overall protective curtain width – 78 cm



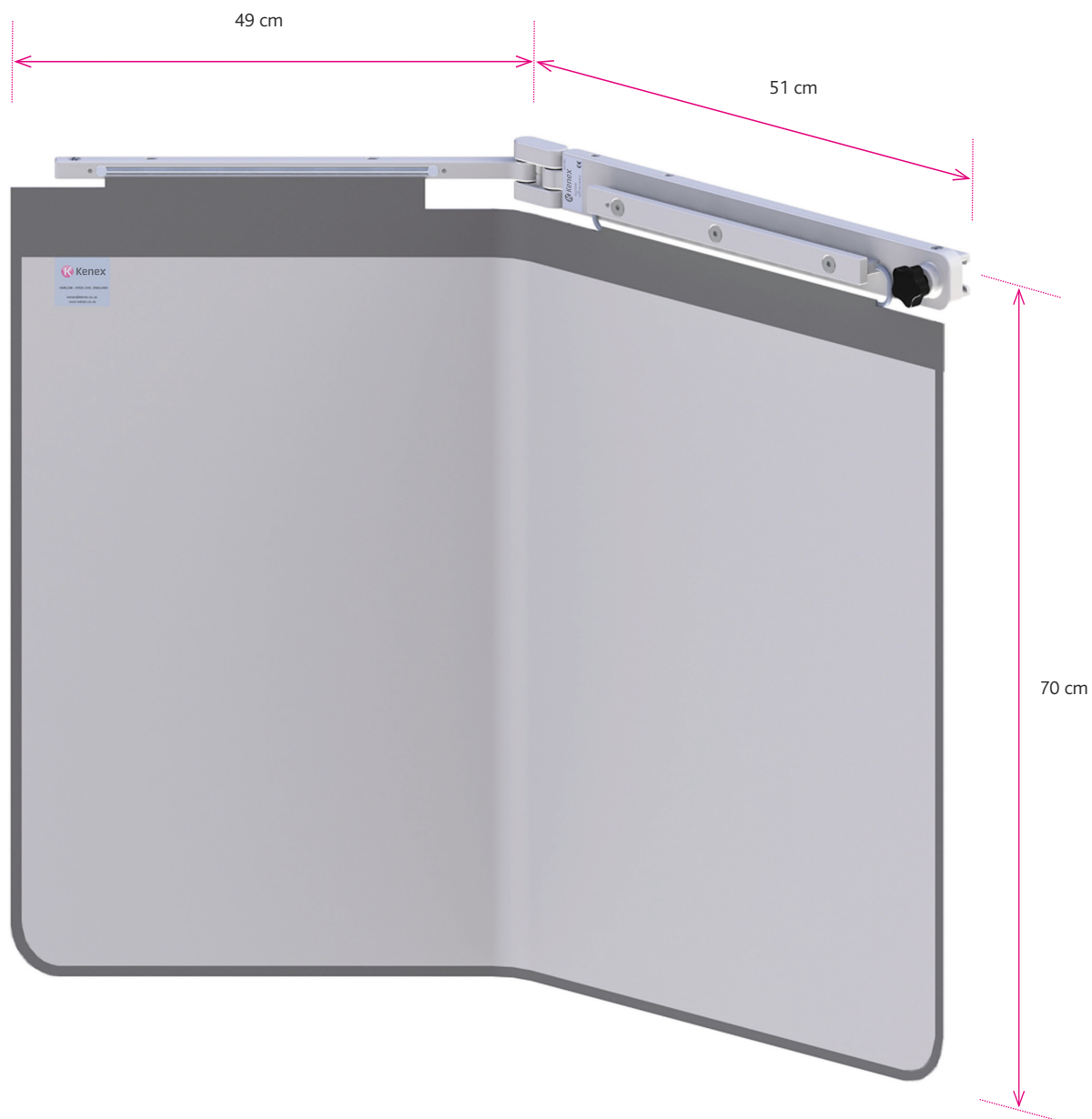
> 312/E-010, -011, -012, -013 Dimensions

Overall protective curtain width – 92 cm



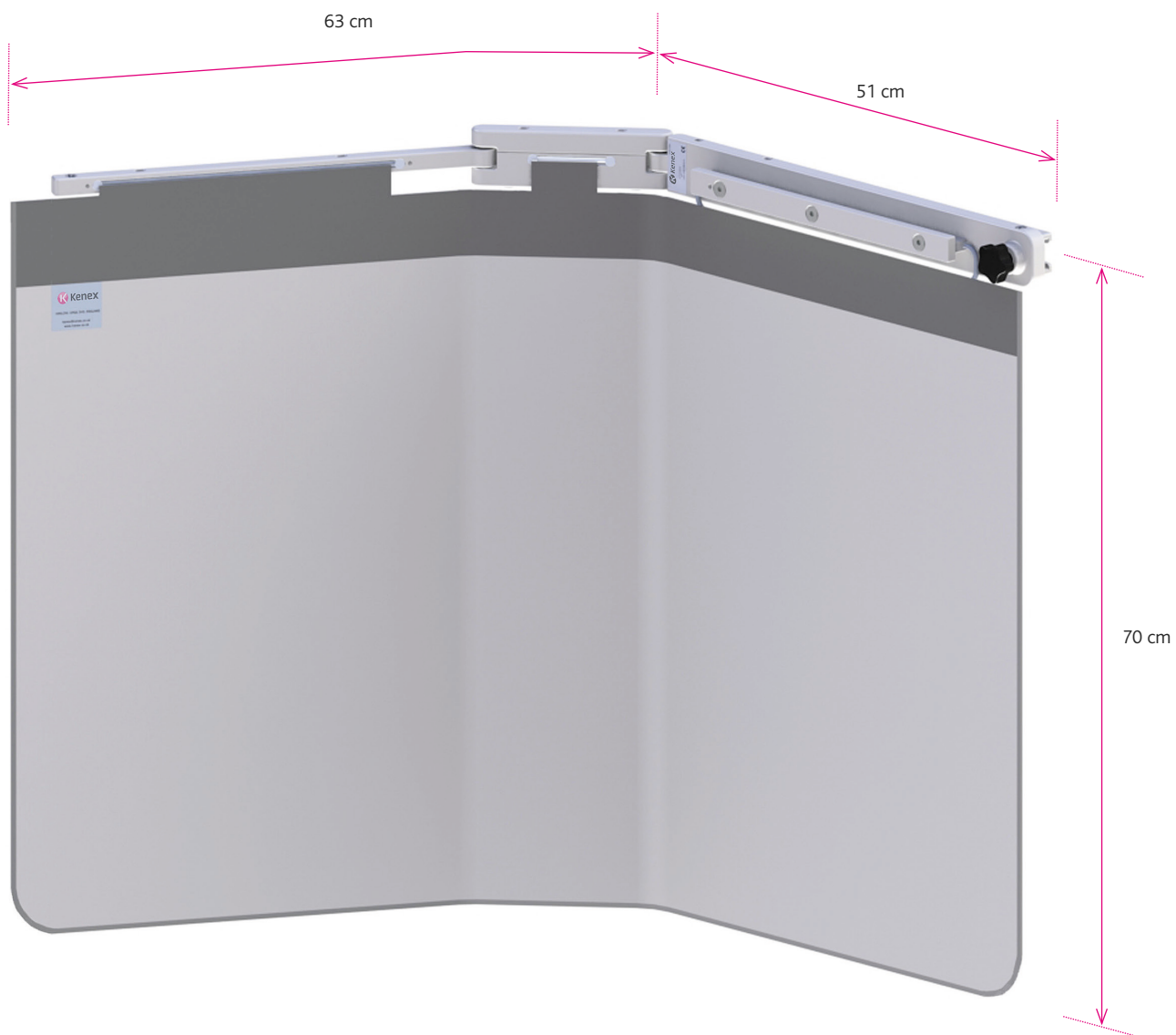
> 312/E-015, -016 Dimensions

Overall protective curtain width – 100 cm



> 312/E-020, -021, -022,-023 Dimensions

Overall protective curtain width – 114 cm





Kenex (Electro-Medical) Limited
Unit 17, RO24 Greenway
Harlow Business Park
Harlow, Essex
CM19 5QB
England

T: +44 (0)1279 417241
F: +44 (0)1279 443749
E: kenex@kenex.co.uk
www.kenex.co.uk