

REISON
MEDICAL

for user friendly accessories

design and innovation

Reison Medical first began making operating tables in the 1960s. Building on years of experience, the company now focuses on in-house production of accessories for operating tables.

Reison Medical aims to make work around the operating table easier. The accessories we have developed are simple to use and clean, and are anatomically adapted for both patients and staff. Reison Medical accessories are easily fastened with a special hook-on coupling.

Reison Medical produce functional products of a clean design and with a smooth finish. We offer easy solutions created out of demand for function and quality from the international market.

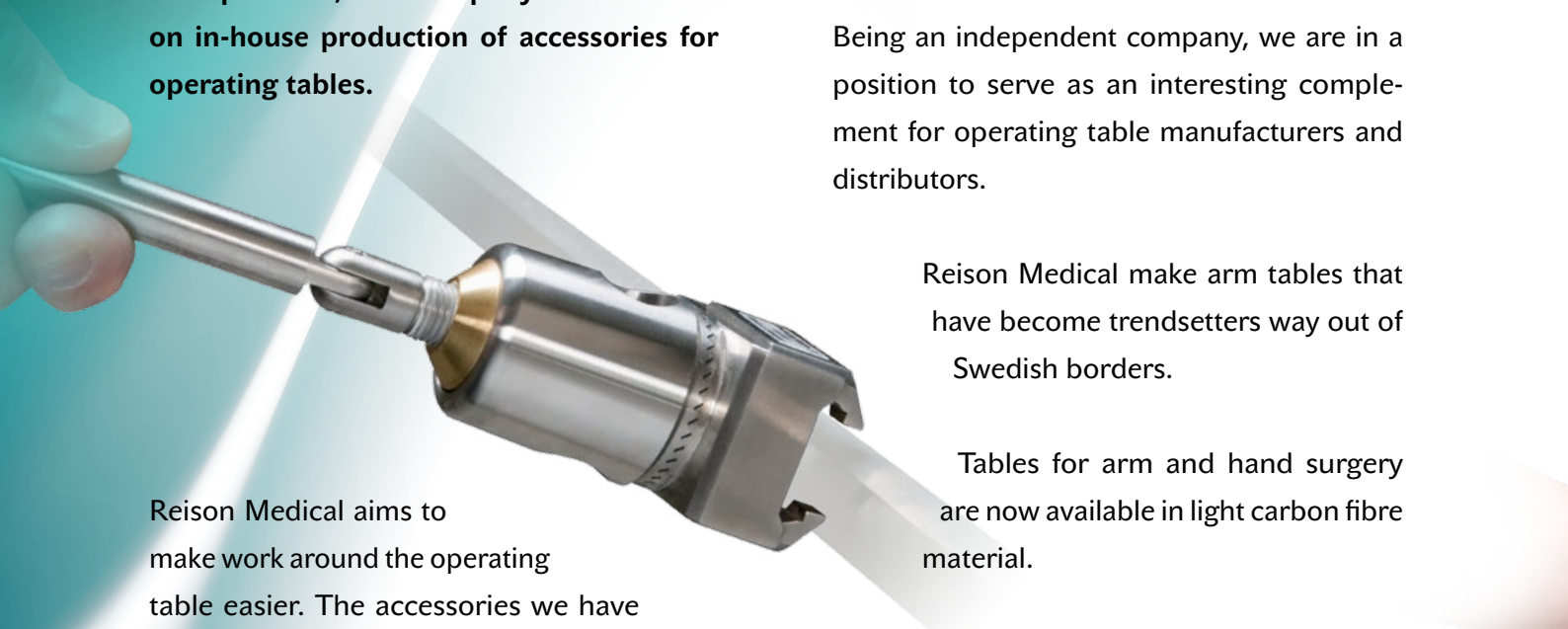
Today, we export more than 80% of our production to Europe as well as the US.

Being an independent company, we are in a position to serve as an interesting complement for operating table manufacturers and distributors.

Reison Medical make arm tables that have become trendsetters way out of Swedish borders.

Tables for arm and hand surgery are now available in light carbon fibre material.

You can always expect to get good service, user friendly products and quick deliveries from Reison Medical. All of our products are made in Sweden.



*Our trademark armboard
with one hand ball joint release.
Clamp with hook-on function.*



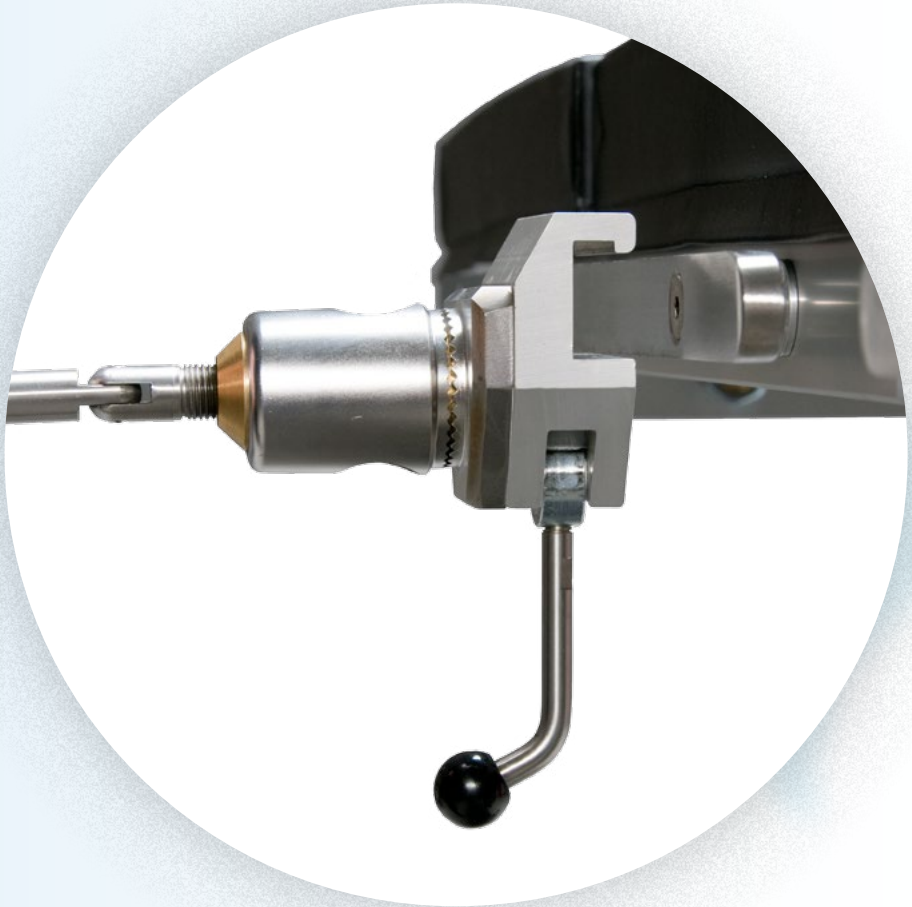
clamps

Reison Medical Clamps

Work at the operation table is often done under stress. This is why all appliances should be easy and flexible to handle.

We have developed a clamp concept offering the end user easy and smooth mounting.

We offer screw clamps and accessories that are made to meet the European, US and UK rail standards.

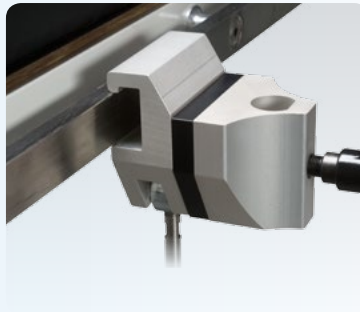


– Clamps for Reison armboards –



10018 CLAMP FOR ARMBOARD

Compatible with older Reison armboards.
Siderail options: **10018-US, 10018-UK**



10019 CLAMP FOR ARMBOARD STD

Spare clamp with 10 mm spacer.
Compatible with older Reison armboards.
Siderail options: **10019-US, 10019-UK**



10019-S30 CLAMP FOR ARMBOARD

Spare clamp with 30 mm spacer.
Compatible with older Reison armboards.
Siderail options: **10019-S30-US, 10019-S30-UK**



10-301 ACCESSORY CLAMP

Standard clamp for supports.
Hook-on type in anodized aluminium.
Siderail options: 10-301-US or 10-301-UK



10-304 RADIAL CLAMP

Rotatable clamp for post \varnothing 16–20 mm.
Hook-on type for siderail Eur 25×10 mm.



10-307 CLAMP

Hook-on type with separate locking lever
and also rotatable! For post \varnothing 16–20 mm.
Siderail options: 10-307-US or 10-307-UK



10-308 RADIAL CLAMP UNIVERSAL

Rotatable clamp for post \varnothing 16–20 mm.
For EU, US and UK siderail.



10-305 RADIAL CLAMP

For post 16–20 mm.
Hook-on type (Eur 25×10 mm).
Siderail options:
10-305-US or 10-305-UK



supports

Reison Medical Supports

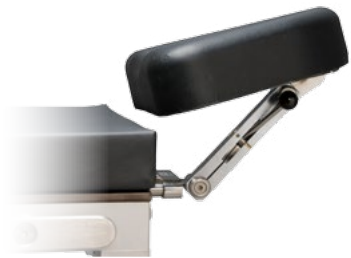
The comfort for patients is of a crucial importance during an operation. Especially during extended times of anaesthesia, the patient-close supports must give good fixation and a maximum of comfort.

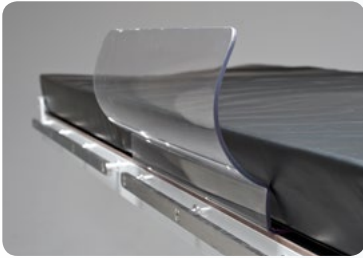
People are all of different shapes, so Reison Medical supply pads that are easy to change for all kinds of applications.



10-230-F FLEXIBLE HEAD SUPPORT

Multi adjustable. For ENT-plastic and eye surgery.
Standard fittings: 2 pins Ø 15 mm C-C 106 mm.
Other fittings available upon request.





10-552 ARM & LEG GUARD

Securely hold patients arms and legs during any long case. The guard slides under your table pad and protects the patient and the anesthesia lines.



10-553 COVER FOR ARM & LEG GUARD

Black PN material

Application



10-334 HEADREST

Soft-elastic foam core. Very durable and disinfectant-proof and 100% liquid-tight.



10-230-PED HEAD SUPPORT, CHILDREN

Made for all kind of ENT surgery on children.



10-230-MDBL HEAD SUPPORT DOUBLE LINK

Made for all kind of ENT surgery. Can be adjusted to any desired angel below and over horizontal.



10-389 LATERAL ARMSUPPORT

Turns 360° horizontally and slants vertically 130° in both directions. Adjustable in height.

Recommended clamp: 10-305



10-333 CIRCULAR HEAD CUSHION

Antistatic cushion for head fixation (left). 10-333-PED for children (right).

Cushion and straps included.



supports



10-353 KNEE ARTHROSCOPY HOLDER

Adjustable height and angle (with a crank). 3 cushions included.

Recommended clamp: 10-304, 10-305 or 10-308.



10-353-XL KNEE ARTHROSCOPY HOLDER

Adjustable height and angle (with a crank). 3 cushions included.

Recommended clamp: 10-304, 10-305 or 10-308.



10-369 SUPPORTING ROLL, horizontal

Diameter 135 mm. Length 275 mm.
Length of post 350 mm.

Recommended clamp: 10-301



10-350 SHOULDER SUPPORTS

1 concave and 1 plane cushion included.

Sold in pairs. Length of post 350 mm.

Recommended clamps: 10-301 (2)



10-368 SUPPORTING CUSHION, vertical

Vertical (upright) diameter 135 mm.
Length 275 mm. Length of post 350 mm.

Recommended clamp: 10-301



10-231 HEAD SUPPORT

Made for all kind of surgery where the patient is lying face down. Can be adjusted horizontally between 110° below and 45° over.

Unique locking system – locks both pivots by means of one lever.



10-237 HEAD SUPPORT

Made for all kind of ENT surgery. Can be adjusted to any desired angel below and over horizontal.

Unique locking system – locks both pivots by means of one lever.



10-335 NEURO HEAD SUPPORT

Designed for neurosurgery treatment. Many adjustment possibilities – put the patients head in any desired position.



11443 & 11438 HUMERUS SET

Positions the upper arm of a patient and gets a broken forearm in correct position for plastering.

Recommended clamp: 10-304 or 10-308



10-393 WEINBERGER HAND FIXATION

Fixates the hand when a patients forearm has to be stretched out.

For use with Humerus set 11443 & 11438

supports



10-360 LATERAL SUPPORT, rotatable

Rotatable support with curved cushion.
180×85 mm.

Recommended clamp: 10-301



10-560 LATERAL SUPPORT, rotatable

Rotatable. 1 plane and 1 multifunctional curved cushion included. Post: 350 mm.

Recommended clamp: 10-301



10-561 LATERAL SUPPORT, rotatable

Rotatable. 1 plane and 1 multifunctional curved cushion included. Post: 350 mm.

Recommended clamp: 10-301



10-365 LATERAL SUPPORT

Support with curved cushion.
200×200 mm.

Recommended clamp: 10-301



10-566 LATERAL SUPPORT

Support with 1 plane and 1 multifunctional curved cushion included. Post: 350 mm.

Recommended clamp: 10-301



10-565 LATERAL SUPPORT

Support with 1 plane and 1 multifunctional curved cushion included. Post: 350 mm.

Recommended clamp: 10-301



10-449 LEG HOLDERS XL

For Bariatric surgery. Medisoft filling for highest comfort. Sold in pairs. Post \varnothing 20 mm.

Option: post \varnothing 18 mm 10-449-18

Recom. clamps: 10-304, 10-305 or 10-308



10-450 LEG HOLDERS with BALL JOINT

Integral foam cushions. Sold in pairs. Post \varnothing 20 mm.

Option: post \varnothing 18 mm 10-450-18

Recom. clamps: 10-304, 10-305 or 10-308



10-359 ANGULAR ACCESSORY RAIL

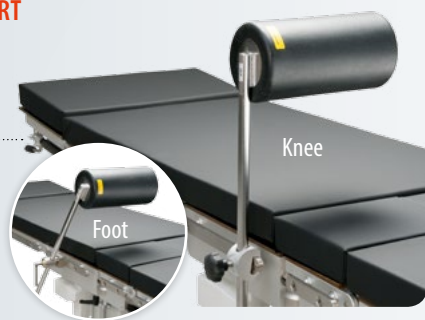
Hook-on clamp included (Eur 25×10 mm).

Clamp & rail options: 10-359-UK

10-367 TIBIA SUPPORT

Diameter 135 mm.
Length 275 mm.
Length of post 700 mm.

Recommended clamp:
10-304 or 10-305



10-367-K TIBIA SUPPORT, short

Can be used as foot support.
Diameter 135 mm.
Length 275 mm.
Length of post 400 mm.

Recommended clamp:
10-304 or 10-305





10-296 FOOT SUPPORT

Can be used as a split leg section or one piece leg section.



10-366 ELBOW SUPPORT

To be mounted on a siderail.
Adjustable height with hook-on clamp.
Siderail options: **10-366-US** or **10-366-UK**



10-448 THIGH HOLDER

For fixation and support of the upper leg.
Recommended clamp: **10-301**



10-567 PUBIS SUPPORT

Adjustable support for a side-lying patient.
Recommended clamp: **10-301** or **10-308**

10-531 SAFETY SIDERAILS

Foldable. Sold in pairs.

Siderail options:
10-531-US or **10-531-UK**

Option: Safety Cover, **10-531-H**

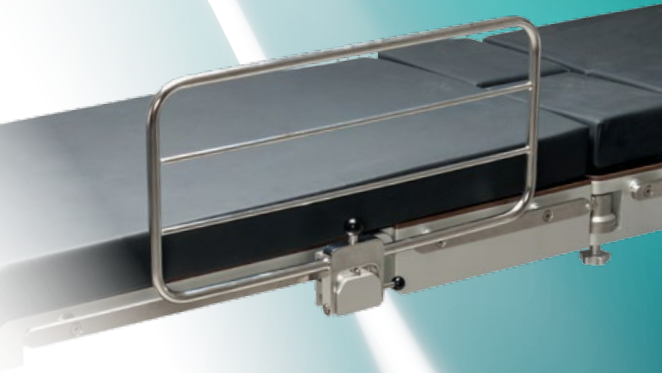


10-530 SAFETY SIDERAILS

Foldable. Sold in pairs.

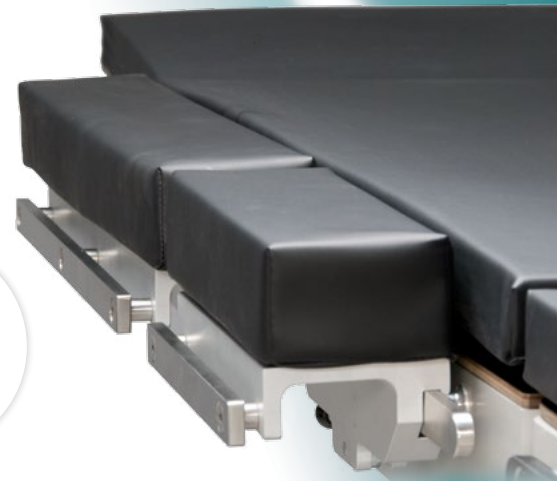
Siderail options:
10-530-US or **10-530-UK**

Option: Safety Cover, **10-530-H**



10-410 SUPPORTING FRAME

Clamp included.



10-420 WIDENING SECTION

Extruded alu profiles.
Hook-on type with easy and safe locking.
Lengths: 240 mm, 300 mm, 455 mm or 500 mm.

armboards & surgery procedures

10-380 ARMBOARD

Popular armboard with one hand ball joint release. Clamp with hook-on function.

Siderail options: 10-380 (Eur 25×10 mm), 10-380-US or 10-380-UK

Recommended cushions: 10-381, 10-382, 10-382-H



10-380-M ARMBOARD, with flat plate

Flat plate version of 10-380.

Siderail options: 10-380-M-US, 10-380-M-UK

Recommended cushions: 10-181, 10-182

10-380-K ARMBOARD, short

Short version of 10-380. Length 455 mm.

Can be used as an arm support for a patient in a seated position.

Siderail options: 10-380-K-US or 10-380-UK-K

Recommended cushion: 10-382-K



Application with 10-359 Accessory rail

10-380-L ARMBOARD, with long post

Long post version of 10-380.

Post length 310 mm.

Siderail options: 10-387-L-US or 10-387-L-UK

Recommended cushions: 10-381, 10-382, 10-382-H



10-380-SX ARMBOARD SIMPLEX

Can be adjusted in height and turned around, but not be slanted up/down.

Clamp with hook-on function.

Siderail options: 10-380-SX-US or 10-380-SX-UK

Recommended cushions: 10-381, 10-382, 10-382-H



10-387 ARMBOARD

Easily adjusted with one hand operated ball joint release.

Rotatable clamp with hook-on function (e.g. for "beach chair" position).

Siderail options: 10-387-US or 10-387-UK

Recommended cushions: 10-381, 10-382, 10-382-H

10-385 ARMBOARD, X-RAY

For use with a C-arm image intensifier.

Radio translucent top, making it perfect for fluoroscopy of the arms of the patient.

Standard clamp.

Siderail options: 10-385-US or 10-385-UK



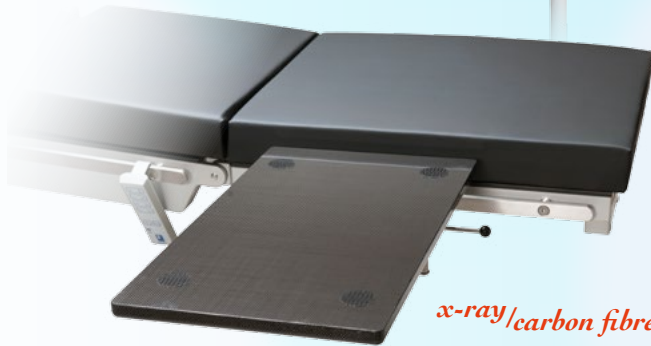
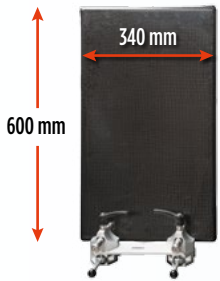


10-396 ARM & HAND SURGERY TABLE

Lightweight. Made from carbon fibre.
Twin clamps with hook-on function.

Supporting leg included (glass fibre).
Left or right mounting.

Siderail options:
10-396-US or 10-396-UK



**10-396-K
ARM & HAND SURGERY TABLE**

Lightweight. Made from carbon fibre.
Surface dimensions: 600×340 mm.

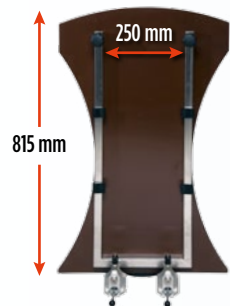
Siderail options:
10-396-K-US or 10-396-UK-K



**10-390-K
RM & HAND SURGERY TABLE**

Surface dimensions: 600×340 mm.

Siderail options:
10-390-K-US or 10-390-UK-K



10-390 ARM & HAND SURGERY TABLE

Twin clamps with hook-on height
adjustment.

Supporting leg included (glass fibre).
Left or right mounting.

Siderail options:
10-390-US or 10-390-UK.



**10-398
ARM & HAND SURGERY TABLE, long**

Lightweight. Made from carbon fibre.

Perfect for operating tables with no rails
and a "free floating" top in carbon fibre.



armboards & surgery procedures



10-181 COMFORT CUSHION

High comfort cushion (viscolastic) with velcro fastening. Flat bottom and flat surface.

For 10-380-M (flat)



10-182 COMFORT CUSHION

High comfort cushion (viscolastic) with velcro fastening. Flat bottom and curved surface.

For 10-380-M (flat)



10-382-H COMFORT CUSHION

High comfort cushion (viscolastic) with velcro fastening.

For 10-380, 10-380-L, 10-380-SX, 10-385, 10-387



10-381 MOULDED CUSHION

Smooth flat surface – easy to clean.

For 10-380, 10-380-L, 10-380-SX, 10-387



10-382 MOULDED CUSHION

Smooth curved surface – easy to clean.

For 10-380, 10-380-L, 10-380-SX, 10-387



10-382-K COMFORT CUSHION, short

High comfort cushion (viscolastic) with velcro fastening.

For 10-380-K



10-383 STRAP FOR ARMBRAND

Velcro fastening. Length: 580 mm.

10-383-L = Length: 700 mm.

For armboard 10-380 and 10-387



10-382-HT COMFORT CUSHION

High comfort cushion (viscolastic) with velcro fastening. Extra padding. Thickness: 8 cm.

For 10-380, 10-380-L, 10-380-SX, 10-387



11233 PROCTOLOGY ATTACHMENT

Supports a kneeling patient.

Height: 490-690 mm

Width: 500 mm

Max patient weight: 325 kg

Safe working load: 200 kg

Other fittings available on request.



instrument tables

10-060 INSTRUMENT TABLE

Tray length: 500 mm

Tray width: 400 mm

Post diameter: 16 mm

Recommended clamp: 10-301



10-061 INSTRUMENT TABLE

Tray length: 540 mm

Tray width: 400 mm

Post diameter: 16 mm

Recommended clamp: 10-301



Unique locking system – locks both pivots by means of one lever

straps and fixation

Reison Medical Straps and Fixation

Products for fixation are under constant development work. New techniques in operating have made the use of separate leg plates more common.

Therefore, we have produced a new strap that guarantees the positioning of the patient's foreleg in the middle of the leg plate, irrespective of the thickness of mattresses.



10-465 LEG & BODY STRAP

Fixation during various surgical procedures.
Velcro fastening.
Dimensions: 2100×85 mm



10-373 LEG STRAP with clamps

Fixation for both legs of a patient.

Siderail options: 10-373-US or 10-373-UK



10-370 WRISTLET WITH STRAP

Fixation for the forearm.
Clamp included.



10-452 PADDED STRAP

Comfort Strap for 10-450 Leg Holders.
Velcro fastening.



10-464 LEG & BODY STRAP, wide

Softly padded for high patient comfort.
Hook and velcro fastening.



10-464-M LEG & BODY STRAP, wide

Softly padded for high patient comfort.
Velcro fastening.



10-467 COMFORT LEG STRAP

For split leg section. Velcro fastening.
Length: 1100 mm
Width: 85 mm



10-466 LEG STRAP

Two piece with velcro fastening.
Length: 850 mm (velcro part: 450 mm)
Width: 85 mm



10-468 LEG STRAP

For split leg section.
Adjustable strap to keep the legs of the patient in the middle of the leg section independent of the thickness of the mattress.
Velcro fastening. Sold in pairs.
Length of loop strap: 685 mm.

10-468-L Loop strap with 800 mm length.

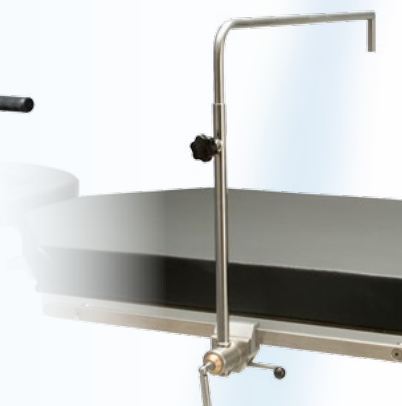
other accessories

10-313 ANAESTHESIA FRAME, carbon fibre

Made from carbon fibre.
Telescopic extension arms with clamp included.

Siderail options: 10-313-US or 10-313-UK

light weight

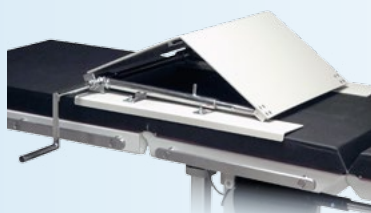


10-310 ANAESTHESIA FRAME

Telescopic with a rotatable hook-on clamp.

Siderail options: 10-310-US or 10-310-UK

Extension arms option: 10-315



10-480 BACK & KIDNEY ELEVATOR

Crank operated elevation.

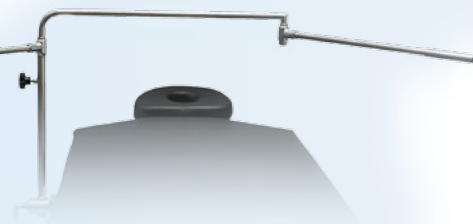
Adjustable width (490-550 mm) to fit various operating tables.



10-485 HERNIA BRIDGE

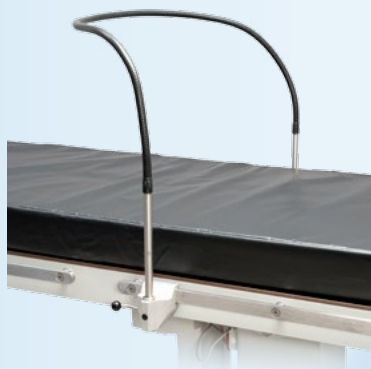
Crank operated elevation.

Adjustable width (490-550 mm) to fit various operating tables.



10-315 EXTENSION ARM

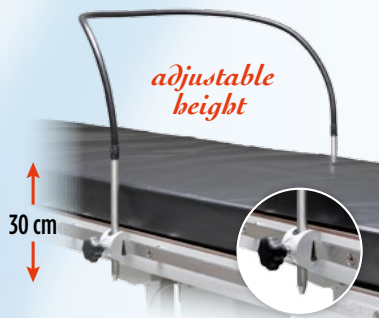
For Anaesthesia Frame 10-310.
Sold in pcs.



10-311 ANAESTHESIA FRAME FLEX

Flexible. Length 180 cm. Hook-on clamps included (Eur 25×10 mm).

Siderail options: 10-311-UK or 10-311-US



10-311-16 ANAESTHESIA FRAME FLEX

Flexible. Full length 180 cm. Adjustable height 30 cm. Clamp fittings \varnothing 16 mm.

Recommended clamp: 10-301



10-314 TONSIL FRAME

Hook-on clamp 10-307 included.

10-400 INFUSION STAND

Rotatable hook-on clamp with easy locking.

Siderail options:

10-400-US or 10-400-UK



10-455 TRANSPORT HANDLES

For Eur 25×10 mm siderail.

Sold in pairs.

Siderail option: 10-455-UK



10-456 TRANSPORT HANDLES

For Eur 25×10 mm siderail.

Sold in pairs.

Siderail option: 10-456-UK



10-457 TRANSPORT HANDLES

Universal for EU, US and UK siderail.

Sold in pairs.



10-458 TRANSPORT HANDLES

Universal for EU, US and UK siderail.

Sold in pairs.



10-491 EXTENSION RAIL

Universal for EU, US and UK siderail.

Sold in pairs.



10-401 INFUSION STAND

Upright. Hook-on clamp included.

Siderail options:

10-401-US or 10-401-UK



10-402 INFUSION STAND

One hand operated release and locking.

Hook-on clamp included.

Siderail options: 10-402-US or 10-402-UK

for the latest product updates



www.reison.se



Download the catalog as a PDF file



Télécharger le catalogue français en format PDF

Distributor

REISON
MEDICAL

for user friendly accessories