

Operating Table Accessories

Looking after you and your patients



Innovative medical technology – practically applied

Operating Table Accessories

Anetic Aid is a UK-based manufacturer which has been designing, supplying and supporting equipment across the country and internationally, since 1977.

Renowned for innovation and high quality, we listen to customers and work closely with them to develop state-of-the-art products for a variety of clinical environments.

This brochure shows our wide range of Operating Table Accessories where we focus on providing patient comfort and safety combined with the practical requirements of diverse surgical procedures.

Patient positioning, frequently combined with sophisticated pressure care technology, is a key feature of these products, and we also focus on ergonomics, looking at the needs and welfare of the practitioner in using and storing them.

All of our products are manufactured to a documented in-house quality control procedure, individually inspected and guaranteed against any defects in materials or workmanship.



Contents

K8 Operating Table Pressure Care Mattresses	4-5
Operating Table Pressure Care and Protection	6
Absorbent Table Sheets	7
Head	8-9
Arm and Hand	10-13
Shoulder, Spine and Torso	14-19
Gynaecology, Urology and Fertility	20-23
Foot and Leg	24-26
General Accessories	27-30
Pressure Relieving Gel Supports	31
Pressure Relieving Gel Supports – Oasis	32-35
Pressure Relieving Gel Supports – Oasis Elite	36-37
Pressure Relieving Gel Supports – Oasis+	38-39
Pressure Relieving Gel Supports – Azure	40-41
Gel Positioning Purchase Guide – Supine Position	42
Gel Positioning Purchase Guide – Prone Position	43
Gel Positioning Purchase Guide – Lateral Position	44
Gel Positioning Purchase Guide – Lithotomy Position	45
Obstetrics	46-47
Patient Trolley Accessories	48-49
QA4 Day Surgery Trolley System Accessories	50-51

Customer Service

Members of our qualified sales team are available for consultations and can often provide sample products for on-site trials. We also offer demonstrations and training to ensure users fully understand the features of each item.



Combining industry knowledge with innovative technology



Designed and produced at our UK manufacturing facility using the latest engineering techniques



Manufacturer, designer and supplier of high quality medical equipment around the world

Recent evidence suggests that any patient undergoing surgery for more than three hours faces a risk of developing pressure sores.

This is caused by the patient's immobility during the operation and the use of anaesthesia.



Anetic Aid's K8 technology mattresses can be found in over 90% of NHS hospitals in the UK.



K8
TECHNOLOGY

In the science of Kinetics, there are eight points of contact the human body makes when lying on a hard surface – hence K8.

Pressure care and infection control are top priorities in a patient mattress – and Anetic Aid's independently tested K8 pressure care mattress addresses both of these vital factors.

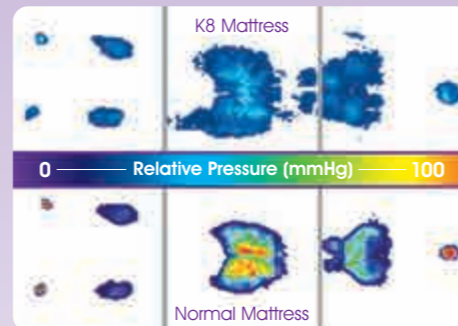
At its core is high density foam, uniquely specified by Anetic Aid. This means that the mattress can be thinner, while still offering the same, if not better, pressure distribution than a thicker, less sophisticated foam. This is particularly important with tables and trolleys, as it means the overall height can be kept as low as possible for easy access by frail or elderly patients.

We then add a layer of thermally responsive gel-feel memory foam, which helps to relieve pressure by distributing the patient's weight as evenly as possible across the surface area – whatever their position.

Both of these foam elements have antibacterial and microbial fungistatic properties – but we go further. We add a latex-free, 4-way stretch polyurethane (PU) outer cover to each mattress (most materials being 2-way stretch), which is made of an anti-microbial, water resistant, vapour permeable material.

This means it is not only contamination-resistant, but it also allows the skin to breathe – for greater patient comfort.

Finally, our unique ultrasonic sealing system effectively welds the seams of the outer cover material together to give an almost unbreakable seal, making the K8 a class leader in infection control.



- High risk pressure care mattress
- Independently tested
- Latex free
- Antibacterial/vapour permeable
- Welded seams
- X-ray translucent

Measuring Service

Mattresses can be supplied to your own dimensions – and we offer an on-site measuring service.

Please ask to see a member of our qualified sales team for a consultation to discuss your specific requirements.

Call us on: **01943 878647**



Touch Fastening

All mattresses are supplied with polyurethane touch fastenings as standard and spares are also available.



Description	Code
Touch Fastener Pack	10091



Eschmann Type

Description	Code
MR Type Table K8 Pressure Care Mattress	10010
RX500 Type Table K8 Pressure Care Mattress	10020
RX600 Type Table K8 Pressure Care Mattress	10025
T20 Type Table K8 Pressure Care Mattress c/w Locating Sockets	10080
T20 Type Table K8 Pressure Care Mattress c/w Touch Fastening	10081

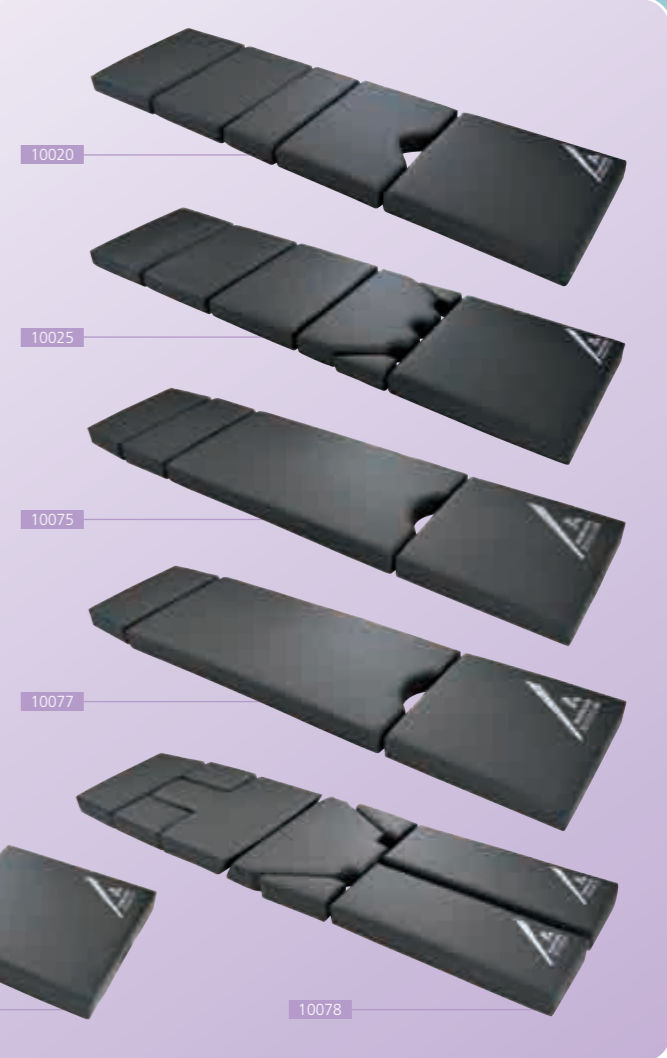
Maquet Type

Description	Code
Maquet Alphastar Type K8 Pressure Care Mattress	10075
Maquet Alphamax Type K8 Pressure Care Mattress	10076
Maquet Betastar Type K8 Pressure Care Mattress	10077
Maquet Orthostar Type Table K8 Pressure Care Mattress	10078

Maquet tables can have many different variations – just talk to us about your specific requirements

Steris Type

Description	Code
Steris 3080/3085 Type K8 Pressure Care Mattress	10085



Mattress measuring service available on request

Operating Table Pressure Care and Protection

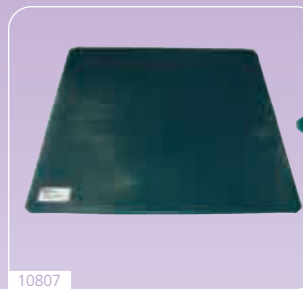


Pressure Relieving Gel Sections

In addition to the K8 Pressure Care Mattress range, Anetic Aid also offers Trulife pressure relieving gel pads for operating tables.

With Oasis, there are a variety of shapes and sizes and some have a series of 30mm² raised profiles which increase the overall surface area of the pad by 33%.

This unique design allows for greater weight distribution and is particularly effective during extended procedures.

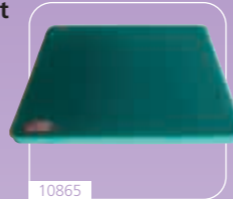


Description	Code
Operating Table Pad 520 x 520 x 10mm (Oasis)	10807
Operating Table Pad 1150 x 520 x 10mm (Oasis)	10808
Operating Table Pad 1800 x 520 x 10mm (Oasis)	10809
Table Pad Set, 3-piece (Oasis)	10815
Perineal Table Pad 520 x 520 x 10mm (Oasis)	10816
Profile Pad 520 x 520 x 12mm (Oasis)	10817
3/4 Length Profile Pad 1145 x 520 x 12mm (Oasis)	10818

Oasis Elite Pads can be used to protect the body in all surgical positions.

The ultra light weight pad consists of a foam base and a gel top, allowing for easy carrying and manipulation by operating theatre staff.

- More than 50% lighter than comparable gel-only products



Description	Code
Table Pad 520 x 520 x 30mm (Elite)	10865
3/4 Table Pad 1150 x 520 x 20mm (Elite)	10866

Azure Table Pads combine an ultra-soft and light weight silicone material on the base and a cured silicone gel on top, with a unique squared profile that cushions the body during surgery.

They can be used to protect the body in all surgical positions and are up to 20% lighter than comparative gel pads.



Description	Code
Profile Pad 520 x 520 x 10mm (Azure)	10886
Profile Pad 1150 x 520 x 10mm (Azure)	10887
Operating Table Pad 520 x 520 x 10mm (Azure)	10895

Absorbent Table Sheets

Absorbent Table Sheets for Theatre



Protecting patients' skin – keeping theatres safe and dry

- The full size table/trolley sheet can also double as a transfer sheet (max patient weight 150kg).

Single product to cover the operating table

Tritón is an absorbent, impermeable, and disposable sheet developed specifically for use in theatre. It prevents the operating table from becoming soiled or wet, while keeping the patient's skin completely dry.

No need for multiple layers of green sheets, underpads and plastic, Tritón absorbs and retains fluids, even when pressure is applied. This is because its absorbent layers turn into hydrogel – a metre² sheet can draw in over three litres of fluid.

Tritón is particularly useful for operating tables and delivery beds: by preventing contamination, it reduces the need to use strong disinfectants which can damage mats and table parts.

It is also ideal for use in treatment or plaster rooms, and for tables used for gynaecological examinations, urology procedures and biopsies.

Available in three convenient sizes, Tritón helps protect the patient's skin from sores as it dries completely, barely a minute after getting wet.

Super-absorbent

Impermeable

Disposable

Tritón Disposable Absorbent Sheets



- Keeps patients' skin dry
- Protects the operating table
- Doubles as a transfer sheet up to 150kg



Absorption up to 3.5 litres of liquid per metre²

Totally dry in 1 minute



Keeps the operating table clean



Saves on green sheets, underpads and plastic



Description	Code
Tritón Impermeable and Absorbent Full Table/Trolley Sheet 1400 x 2000mm, Disposable (box of 60)	55810
Tritón Impermeable and Absorbent Half Table Sheet 1400 x 1000mm, Disposable (box of 60)	55814
Tritón Impermeable and Absorbent Small Sheet 500 x 430mm, Disposable (box of 180)	55815

Protecting patients' skin – keeping theatres safe and dry

Pressure Care Head Supports for all Surgical Positions

Pressure care for the head is as important as any other part of the body during surgery.

As well as foam 'doughnut' head rings made from the same material as our K8 Pressure Care Mattress, we have beanbags for positioning and a range of gel supports.

In the Oasis Elite range, we offer anatomically designed prone head rests which allow the patient to be positioned comfortably face down, with respiratory tubes in place.

Meanwhile, there are several options for supine and lateral positioning from the Oasis and Azure ranges, including a special Oasis+ supine head and neck support. With an anti-slip base and top, it offers air ventilation and raised sides to provide more defined support.



Description	Code
Doughnut Head Ring, Adult	10170
Doughnut Head Ring, Child	10175
Rubens Pillow, Adult	10180
Whitlock Horseshoe Headrest	10185
Vacuum Beanbag Positioner, Head Stabiliser 400 x 300mm	10278
Theatre Pillow	10545



Oasis Closed Head Rings

Description	Code
Closed Head Ring, Paediatric 90 x 40 x 20mm (Oasis)	10801
Closed Head Ring, Adolescent 140 x 35mm (Oasis)	10802
Closed Head Ring, Adult 200 x 75 x 45mm (Oasis)	10803



Oasis Open Head Rings

Description	Code
Open Head Ring, Paediatric 90 x 22mm (Oasis)	10804
Open Head Ring, Adolescent 140 x 35mm (Oasis)	10805
Open Head Ring, Adult 200 x 50mm (Oasis)	10806



Oasis Pads

Description	Code
Table Pad, Head Section 500 x 225 x 10mm (Oasis)	10812
Face Pad 165 x 80 x 8mm (Oasis)	10849



Oasis+ Head and Neck Support

Description	Code
Head and Neck Support 264 x 220 x 64mm (Oasis+)	10900



Oasis elite Closed Head Rings

Description	Code
Closed Head Ring, Adolescent 140 x 34mm (Elite)	10861
Closed Head Ring, Adult 200 x 50mm (Elite)	10862



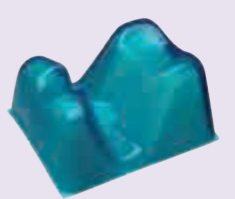
Oasis elite Open Head Rings

Description	Code
Open Head Ring, Adolescent 140 x 34mm (Elite)	10863
Open Head Ring, Adult 200 x 54mm (Elite)	10864



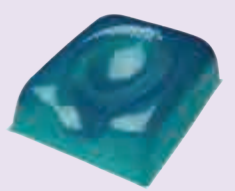
Oasis elite Prone Head Rests

Description	Code
Prone Head Rest, Adult 280 x 235 x 150mm (Elite)	10871
Prone Head Rest, Adolescent 273 x 220 x 135mm (Elite)	10872



Oasis elite Supine Head Rests

Description	Code
Supine Head Rest, Adult 275 x 237 x 90mm (Elite)	10873
Supine Head Rest, Adolescent 275 x 230 x 65mm (Elite)	10874



AZURE Head Protector

Description	Code
Head Protector 260 x 250 x 50mm (Azure)	10885



ENT, ophthalmics, oral and maxillofacial surgery (OMFS) procedures

Supports, Retainers and Arm Tables

Anetic Aid offers a wide selection of arm supports including arm tables for positioning and protecting patients in prone, supine or lateral positions.

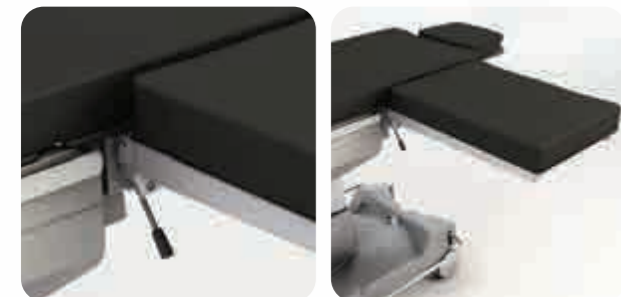
Additional or replacement pads can all be purchased separately.

Extended Arm Table

10233



- Our extended ultra light weight arm table attaches directly without the need for clamps
- It is X-ray translucent and has a removable telescopic leg



Description	Code
Extended Arm Table, X-ray Translucent c/w Pad	10233
Extended Arm Table 75mm Pad ONLY	10234

Arm Tables



Description	Code
Narrow Arm Table 590 x 210mm c/w Pad	10220
Narrow Arm Table 590 x 210mm Pad ONLY	10221
Straps for Narrow Arm Table code 10220 (pair)	10222
Narrow Arm Table Clamshell Pad c/w Integrated Strap	10223
Square Arm Table 450 x 415mm c/w Pad	10225
Square Arm Table 450 x 415mm Pad ONLY	10226
Easy Armboard Lift-to-Position for EU Side Bar, 75mm c/w Pad	10774
Easy Armboard Lift-to-Position for UK Side Bar, 75mm c/w Pad	10775
Easy Armboard Replacement Pad 50mm	10703
Easy Armboard Clamshell Pad ONLY	10704
Easy Armboard Replacement Pad 75mm	10705



Description	Code
Rotary Clamp, Clip-on™ Socket – UK Side Bar	10245
Rotary Clamp, Clip-on™ Socket – EU Side Bar	10246
Rotary Clamp, Socket – Stainless Steel for UK and EU Side Bar	10248
Universal Clamp, Socket and Rail for UK and EU Side Bar	10250



Lateral / Prone Arm Support

This support's malleable hand rest enables surgeons to place the patient's hand in any desired orientation, allowing effective positioning of the arm to prevent potential patient injury.



Description	Code
Lateral / Prone Arm Support c/w Pad	10773
Lateral / Prone Arm Support Pad ONLY	10707

Carter Braine Arm Support

This Carter Braine Arm Support is a useful and effective accessory, providing comfortable and convenient placement for the operative or non-operative arm.



In the case of the operative arm, it secures the limb in a stable position for procedures on the elbow. For the non-operative arm, it offers easy access to the patient's IV and enhanced stabilisation of the shoulder.



- Arm support pads also available as stand-alone items

Description	Code
Carter Braine Arm Support c/w Pad	10195
Carter Braine Arm Support Pad ONLY	10196
Carter Braine Arm Support 100mm Pan c/w Pad	10198
Carter Braine Arm Support 100mm Pan, Pad ONLY	10199

Secure positioning for procedures from carpal tunnel release to fracture repair

Supports, Retainers and Hand Tables

Anetic Aid offers a wide selection of arm supports including hand tables, for positioning and protecting patients in prone, supine or lateral positions.

Additional or replacement pads can all be purchased separately.

- Flat armboard pads have a slight indentation to cradle the arm and provide effective pressure relief during various surgical procedures
- The Azure Arm Protector assumes the shape of the individual patient's arm, acting as a second layer of tissue and offering excellent protection against nerve damage.



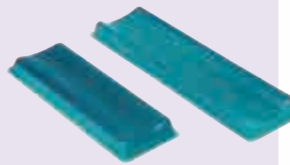
Oasis Ulnar/Brachial Nerve Protectors

Description	Code
Ulnar/Brachial Nerve Protector 380 x 115 x 8mm (Oasis)	10828
Ulnar/Brachial Nerve Protector 460 x 210 x 8mm (Oasis)	10829



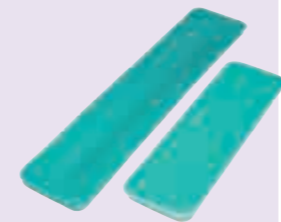
Oasis Armboard Pads

Description	Code
Armboard Pad 390 x 115 x 10mm (Oasis)	10830
Large Armboard Pad 600 x 200 x 10mm (Oasis)	10831
Armboard Pad, Long 600 x 125 x 10mm (Oasis)	10832
Contoured Armboard Pad 510 x 150 x 35mm (Oasis)	10833



Oasis elite Armboard Pads

Description	Code
Armboard Pad 400 x 125 x 20mm (Elite)	10867
Armboard Pad 600 x 125 x 20mm (Elite)	10868
Contoured Armboard Pad 510 x 150 x 35mm (Elite)	10869
Contoured Armboard Pad 395 x 140 x 40mm (Elite)	10870



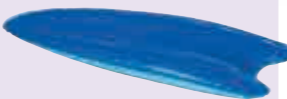
Oasis+ Armboard Pads

Description	Code
Armboard Pad, Short 395 x 134 x 10mm (Oasis+)	10920
Armboard Pad, Long 500 x 161 x 40mm (Oasis+)	10925



AZURE Arm Protectors

Description	Code
Arm Protector, Short 330 x 140 x 30mm (Azure)	10889
Arm Protector, Long 460 x 180 x 35mm (Azure)	10890



Arm Retainers and Retainer Pads



Description	Code
Arm Retainer, L Shaped 235 x 235 x 127mm	10105
Arm Retainer, J Shaped 235 x 210 x 127mm	10110
Arm Retainer, L Shaped 235 x 235 x 300mm	10112

- Arm Retainers and Retainer Pads sold separately

Description	Code
Arm Retainer Pad	10115
Arm Retainer 300mm Wide Pad	10117
Arm Retainer Cover, Wide 157 x 128 x 15mm (Oasis)	10835

Arm Supports



Description	Code
Elbow Board	10152
Elbow Board Pad ONLY	10153

Elbow Protector

This wipe-clean elbow protector offers a high level of padding to protect soft tissue and the ulna nerve.

It can also be used as an effective ankle protector.



Description	Code
Ankle / Elbow Protector (single)	10265

Ease of Positioning for a variety of Shoulder Procedures



The Beach Chair is ideal for positioning during shoulder procedures as it offers unobstructed posterior access and its special Lift-Assist™ mechanism makes re-positioning quick and easy as the pistons support most of the patient's weight.

The chair lies flat for clear anaesthetic access and the Lateral Slide feature enables the surgeon to move the patient closer to the edge of the operating table for increased surgical site access.

The Beach Chair is suitable for procedures including:

- Rotator cuff repair
- Bankart repair
- SLAP lesion repair
- Total shoulder replacement
- Clavicle repair
- Reverse total shoulder replacement
- Subacromial decompression

The Lift-Assist™ Beach Chair weighs under 14kg without the back support panels installed.



Beach Chair supplied with Universal Head Positioner (10786-H1)

Beach Chair



- Removable back panels** increased access to surgical site
- Low-cut backboard** excellent manoeuvrability during total shoulder procedures
- Small rail clamp footprint** frees up accessory rail space needed for different procedures
- Spring Lock Quick Connect** easy installation and removal of head positioners
- Rail width 508mm – 660mm** fits a wide range of operating tables
- Light weight** for single person setup and removal

Description	Code
Beach Chair – for Operating Table with UK Side Bar*	10786
Beach Chair – for Operating Table with EU Side Bar*	10786-EU

* Both of the Beach Chair options above are supplied as standard with a Universal Head Positioner – without Handles (10786-H1)

Beach Chair Accessories



Description	Code
Lift-Assist™ Beach Chair Universal™ Head Positioner without Handles	10786-H1
Lift-Assist™ Beach Chair Universal™ Head Positioner Restraints, Disposable (pack of 10)	10786-H3
Lift-Assist™ Beach Chair Standard Head Positioner c/w Pad Set	10786-H0
Lift-Assist™ Beach Chair Standard Head Positioner Replacement Pad Set	10786-H6



Counter Traction

Description	Code
Counter Traction Strap ONLY	10786-R1
Counter Traction Brace ONLY	10786-R2

Miscellaneous

Arm support attached to Beach Chair – for full description see page 11



Description	Code
Storage Cart for Lift-Assist™ Beach Chair c/w UK Side Bar	10786-S1
Storage Cart for Lift-Assist™ Beach Chair c/w EU Side Bar	10786-S2
Lateral / Prone Arm Support c/w Pad	10773
Lateral / Prone Arm Support Pad ONLY	10707



10786-S1

10773

Make positioning easy with one-handed Lift-Assist™ mechanism



Weightless Shoulder Traction System

The Weightless Shoulder Traction System allows for approximate traction settings up to 18.2kg with a simple turn of the tension adjustment knob.

The boom arm adjusts from 0° to 90° and the boom head swivels so that its pulley always aligns properly with the cord. The system folds down for easy storage.

The system is designed to be used with single-use, disposable arm traps which are supplied in packs of six.



Description	Code
Weightless Shoulder Traction System c/w Arm Trap Disposables, Sterile (pack of 6)	10789
Arm Trap Disposables, Sterile (pack of 6)	10791



Radiolucent Spine Surgery Frame

The Radiolucent Spine Surgery Frame is a light weight, radiolucent platform used to perform less complex spine surgeries. It is more versatile than the Wilson™ Frame, as the single device attaches to standard operating tables.

Its shape creates the desired reverse lordosis needed to open the intervertebral spaces. The Frame enables the patient's abdomen to hang free during procedures. It is radiolucent and allows for unrestricted C-arm access.

The removable crank is used to adjust the amount of flex and tension in the patient supports and every Frame comes with a storage cart. The Frame has a patient weight limit of 227kg.

It is used in disc, microdisc and fusion procedures as well as laminectomies and decompressions.

- For positional stability during spinal surgery

Description	Code
Radiolucent Spine Surgery Frame complete with Crank Handle	10799
Radiolucent Spine Surgery Frame Pad Set ONLY	10799-P1

Radiolucent Spine Surgery Frame Storage Cart

Description	Code
Radiolucent Spine Surgery Frame Storage Cart	10799-C1



All of our extensive range of braces and supports have been designed with a combined emphasis on patient safety and surgical access.

As well as being appropriate for most makes of operating table, these accessories can be used with Anetic Aid's QA4 Day Surgery System – a complete mobile operating system.

The braces and supports are supplied with pads, and additional or replacement pads can also be purchased separately.

Lateral Brace 3-Piece



Description	Code
Lateral Brace 3-Piece c/w Rectangular x2, Circular x1 Supports and Clamps	10770
Lateral Brace Circular Support ONLY c/w Clamp	10771
Lateral Brace Rectangular Support ONLY c/w Clamp	10772
Lateral Brace Pad, Circular	10701
Lateral Brace Pad, Rectangular – Centred Hole	10702
Lateral Brace Pad, Rectangular – Off-set Hole	10708

10770

Table Width Extenders

Table Width Extenders increase the support surface for larger patients.

Their integral locking mechanism clips easily to the rail and they can be used individually or in multiples to create a custom platform.

Description	Code
Table Width Extender 100 x 510mm for UK Side Bar c/w 75mm Pad	10788
Table Width Extender 100 x 510mm for EU Side Bar c/w 75mm Pad	10788-EU

Lateral and Pelvic Supports



10200



10205



10201



10206

Description	Code
Lateral Support c/w Pad	10200
Lateral Support Pad ONLY	10201
Pelvic Support c/w Pad	10205
Pelvic Support Pad ONLY	10206



Montreal Laminectomy Support

The Montreal Laminectomy Support is a prone positioning device used in spinal surgery.

The central hollow relieves pressure on the diaphragm ensuring that the patient can breathe easily.

There are two options in the Anetic Aid range: the first is manufactured to K8 pressure care specification and ergonomically designed to ensure maximum patient comfort. All edges are sealed for easy cleaning.

The second is a silicone gel and light weight foam combination from the Oasis Elite range which has a precontoured surface to provide superior pressure relief and patient protection.



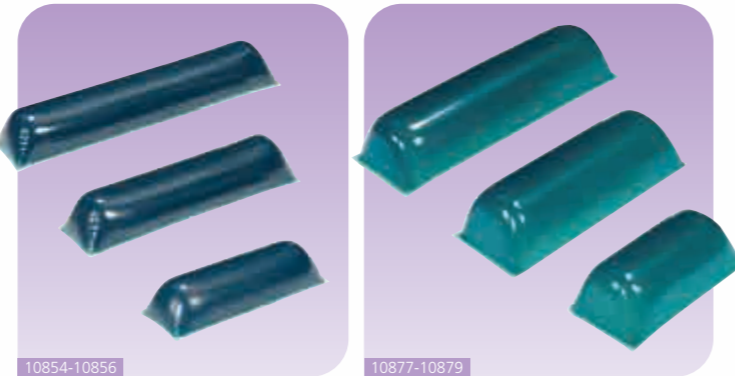
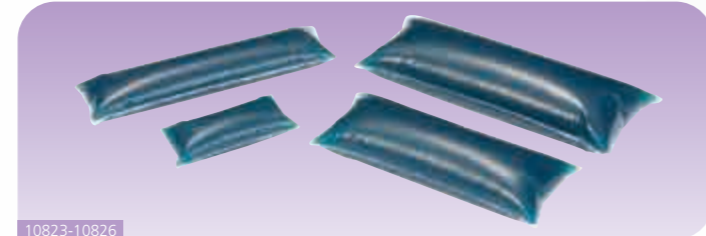
Description	Code
Montreal Laminectomy Support	10160
Montreal Laminectomy Support (Elite)	10990

Pressure Relieving Gel Sections

Surgical procedures involving the spine, the shoulder and the main torso are often those of longer duration.

And it follows, that the longer the surgical procedure, the more important pressure care becomes.

Our Oasis and Oasis Elite ranges offer both patient protection and patient stability for these complex surgical specialisms.



Oasis Patient Positioners

Description	Code
Patient Positioner, X Small 150 x 60 x 40mm (Oasis)	10823
Patient Positioner, Small 330 x 70 x 50mm (Oasis)	10824
Patient Positioner, Medium 290 x 100 x 60mm (Oasis)	10825
Patient Positioner, Large 345 x 120 x 70mm (Oasis)	10826
Wilson Frame Pads 255 x 735 x 10mm (Oasis)	10857

Oasis Chest Rolls

Description	Code
Chest Roll, Flat Bottom 305 x 95 x 75mm (Oasis)	10854
Chest Roll, Flat Bottom 405 x 95 x 75mm (Oasis)	10855
Chest Roll, Flat Bottom 505 x 92 x 75mm (Oasis)	10856

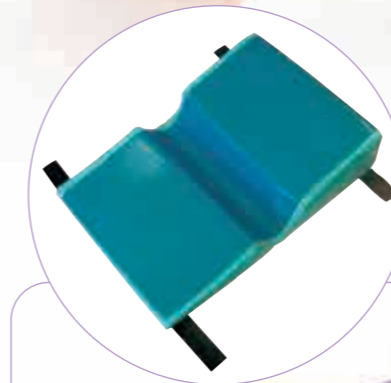
Oasis elite Chest Rolls

Description	Code
Chest Roll 300 x 140 x 110mm (Elite)	10877
Chest Roll 400 x 140 x 110mm (Elite)	10878
Chest Roll 505 x 140 x 110mm (Elite)	10879
Chest Roll 405 x 150 x 150mm (Elite)	10880
Chest Roll 510 x 150 x 150mm (Elite)	10881



Oasis elite Patient Positioners

Description	Code
Lateral Positioner 720 x 500 x 160mm (Elite)	10882
Prone Chest Positioner 610 x 130 x 530mm (Elite)	10883
Prone Positioning System 675 x 500 x 100mm (Elite)	10884



Positioning Belts

Description	Code
Security Strap, Medium c/w Padded Centre Section NO HOOKS	10792
Security Strap, Large c/w Padded Centre Section NO HOOKS	10793
Security Strap Hooks (single unit)	10794
Patient Positioning Belt 505 x 85 x 8mm (Oasis)	10842



Vacuum Beanbags

Vacuum filled beanbags are regularly used to stabilise a patient's position on the operating table.

Anetic Aid offers a range of shapes and sizes from full body to head stabilisers.



Description	Code
Vacuum Beanbag Positioner, Long Body 1000 x 900mm	10274
Vacuum Beanbag Positioner, Full Body 1000 x 730mm	10275
Vacuum Beanbag Positioner, Square 500 x 500mm	10276
Vacuum Beanbag Positioner, Rectangular 460 x 230mm	10277
Vacuum Beanbag Positioner, Full Length 1650 x 720mm	10279

Clamps



Description	Code
Rotary Clamp, Clip-on™ Socket – UK Side Bar	10245
Rotary Clamp, Clip-on™ Socket – EU Side Bar	10246
Rotary Clamp, Socket – Stainless Steel for UK and EU Side Bar	10248
Universal Clamp, Socket and Rail for UK and EU Side Bar	10250
Clamp, Basic Blade Handwheel for UK and EU Side Bar	10761
Clamp, Clip-on™ Blade Handwheel for UK Side Bar	10763
Clamp, Clip-on™ Blade Handwheel for EU Side Bar	10764

Protecting Patients with Lift-Assist™ Lithotomy Stirrups

References to the lithotomy position have been found in some of the oldest known medical documents.

Lithotomy comes from the Greek words for stone 'lithos' and cut 'tomos', and it was named after the ancient surgical procedure for removing kidney stones, gall stones and bladder stones via the perineum.

Today, the position is widely used for procedures ranging from simple pelvic examinations to surgeries in gynaecology, urology, and other gastrointestinal specialisms.

The advantages for the medical practitioner are obvious in terms of visibility and access, but care has to be taken to protect the patient from potential nerve damage caused by pressure, and from over extension of abductor muscles.

Our boot type Lift-Assist™ Lithotomy Stirrups can significantly help to reduce risks in both of these areas: sold in pairs, all of our stirrups have self adjusting boots designed to cover and protect the head of the fibula and hence, the peroneal nerve.

They minimise pressure on the calf when moving the stirrup and the hydraulic mechanism allows easy movement of the leg when placing it in the desired position without compromising the sterile field. Simply releasing the twist grip handle secures the leg holder in all directions.

Lift-Assist™ Lithotomy Stirrups

Description	Code
Lift-Assist™ Lithotomy Stirrups, PAL Pro® c/w Boot-pads and Clamps	10750
Lift-Assist™ Lithotomy Stirrups, Standard c/w Boot-pads and Clamps	10755
Lift-Assist™ Lithotomy Stirrups, Elite c/w Boot-pads and Clamps	10756
Lift-Assist™ Lithotomy Stirrups, Heavy Duty c/w Boot-pads and Clamps	10758
Lift-Assist™ Lithotomy Stirrups, Little PAL (3-6 year olds) c/w Boot-pads and Clamps	10759-P1
Lift-Assist™ Lithotomy Stirrups, Junior PAL (7-11 year olds) c/w Boot-pads and Clamps	10759-P2



Self adjusting boots

allen amatech

Easy-to-use twist grip handle

Hydraulic mechanism for power assisted movement

- Visibility and access for the medical practitioner
- Safety and comfort for the patient
- All stirrups sold in pairs

Heavy Duty Stirrups and Boots for Bariatric Patients

Our heavy duty stirrups are an ideal lithotomy solution being guaranteed for patients up to 327kg in weight.

- Special system for bariatric cases
- Guaranteed for patients up to 327kg in weight



PAL Pro® Lift-Assist™ Lithotomy Stirrups
for patient weights up to **159 kg**



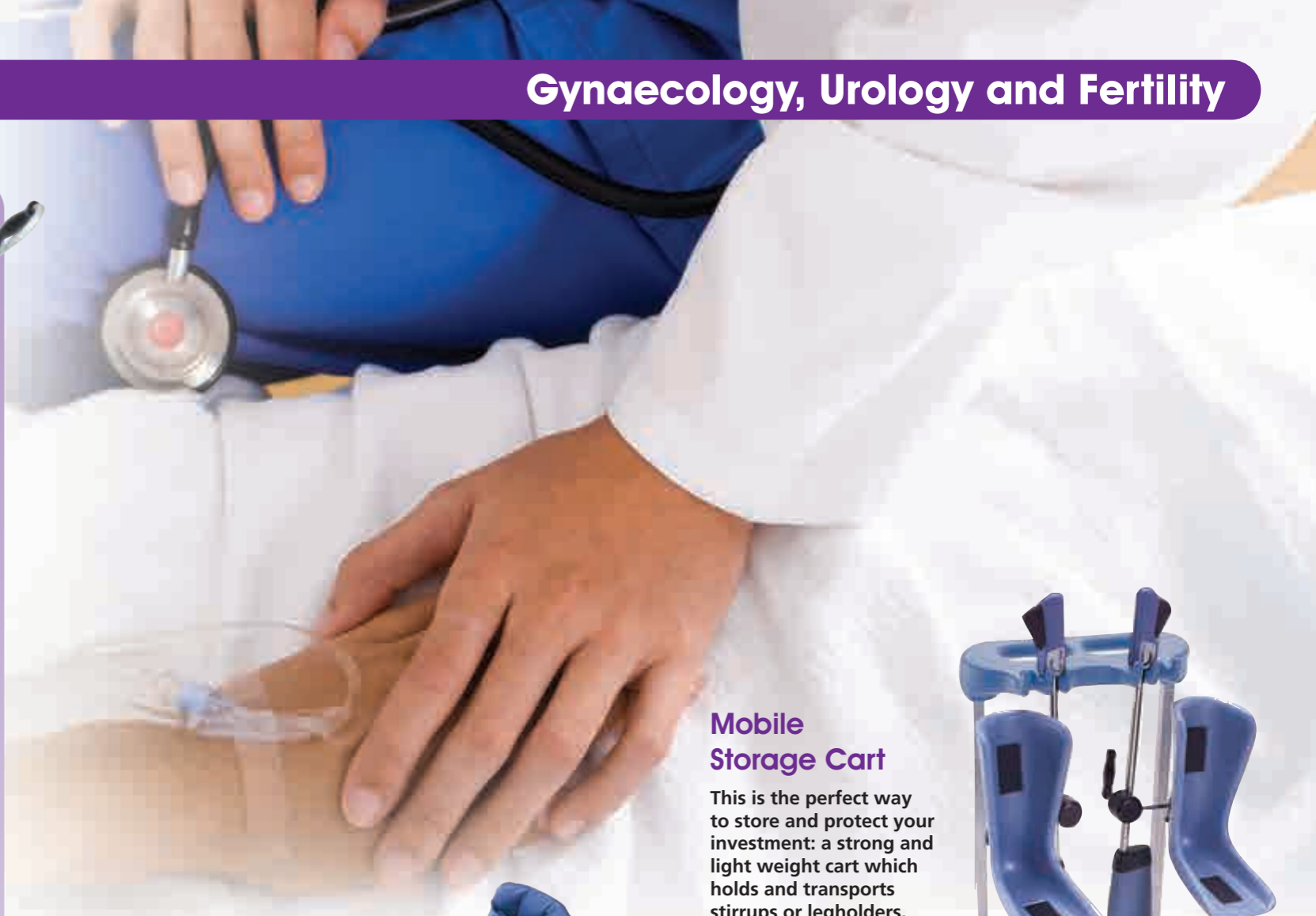
Standard Lift-Assist™ Lithotomy Stirrups
for patient weights up to **159 kg**



Elite Lift-Assist™ Lithotomy Stirrups
for patient weights up to **227 kg**



Heavy Duty Lift-Assist™ Lithotomy Stirrups
for patient weights up to **327 kg**



Mobile Storage Cart

This is the perfect way to store and protect your investment: a strong and light weight cart which holds and transports stirrups or legholders.

Compact and state-of-the-art, it can take stirrups from any manufacturer as it has two different size hooks (up to a 19mm rod on the smaller hook and up to a 25mm rod on the larger one).

The sturdy, moulded, four-caster polymer base is dent-resistant and the deep storage bin is a great place to store clamps and pads securely.



Boot Pads and Accessories



Description	Code
Boot Pads for PAL® / PAL Pro® Stirrups (pair)	10710
Boot Pads for Standard and Elite Stirrups (pair)	10720
Boot Pads for Heavy Duty Stirrups (pair)	10725
Boot Pads for Yellofins® Stirrups (pair)	10730
Boot Pads for Ultrafins® Stirrups (pair)	10735
Clamp, Basic Blade Handwheel for UK and EU Side Bar	10761
Clamp, Clip-on™ Blade Handwheel for UK Side Bar	10763
Clamp, Clip-on™ Blade Handwheel for EU Side Bar	10764

Description	Code
Storage Cart For Lift-Assist™ Lithotomy Stirrups	10760
Easy Rack Lift-Assist™ Lithotomy Stirrups Wall Mounted Storage, UK Side Bar	10762
Easy Rack Lift-Assist™ Lithotomy Stirrups Wall Mounted Storage, EU Side Bar	10762-EU

Our team of product specialists can provide equipment trials and training for staff.
Call 01943 878647 for more information

Ask about our Service and Maintenance packages



Specialist equipment with built-in patient protection

From Stirrups and Supports to Pressure Care and Disposables

Gynaecology, Urology and Fertility procedures often have very specific positioning requirements.

We provide knee crutch stirrups, shoulder supports for Trendelenburg position procedures, gel supports for pressure care and many other items designed for these specialisms.

- Positioning stability
- Pressure relief
- Disposable options
- Built-in patient safety



Knee Crutch Stirrups

Description	Code
Simplicity™ Knee Crutch Stirrups c/w Boot Pads (pair)	10765
Boot Pads for Simplicity™ Knee Crutch Stirrups (pair)	10766

Lithotomy Poles



• Traditional Lithotomy Poles

Description	Code
Lithotomy Pole c/w Sleeves and Padded Slings	10210
Lithotomy Pole Sleeves ONLY	10211
Lithotomy Pole Padded Slings ONLY (pair)	10212
Lithotomy Pole Canvas Slings ONLY (pair)	10213

Perineal Instrument Tray and Fluid Trap



Description	Code
Perineal Instrument Tray, Multi-pin	10235
Perineal Instrument Tray, Pin – Maquet L65 x D28mm (pair)	10236
Perineal Instrument Tray, Pin – Eschmann M, MR and J (pair)	10237
Perineal Instrument Tray, Pin – Eschmann T (pair)	10237A
Perineal Instrument Tray, Pin – Schaerer L46 x D19mm (pair)	10238
Perineal Instrument Tray, Pin – Steris (pair)	10239
Uro Catcher® System for UK Side Bar	10767
Uro Catcher® System for EU Side Bar	10767-EU
Uro Catcher® System Drapes, Sterile (pack of 10)	10768

Shoulder Supports

This shoulder support system has been specially designed to secure the patient in the Trendelenburg position.

It supports without direct pressure on the brachial plexus, protecting against nerve damage. With thick foam padding and a flexible cover, the system supports a patient weighing up to 227kg.

- Visibility and surgical access
- Nerve and tissue protection for patients
- Special Trendelenburg option
- Compact and sturdy storage
- Selection of disposables



Pressure Relieving Gel Sections



Description	Code
Table Pad, Torso Section – Perineal 500 x 990 x 10mm (Oasis)	10813
Perineal Table Pad 520 x 520 x 10mm (Oasis)	10816
Crutch Stirrup Pads x2, Medium 320 x 220 x 10mm (Oasis)	10838
Crutch Stirrup Pads x2, Large 395 x 245 x 10mm (Oasis)	10839
Crutch Stirrup Pads x2, XL 520 x 300 x 10mm (Oasis)	10840



Description	Code
Sacral Protector 400 x 380 x 25mm (Azure)	10888



Clamps

Description	Code
Rotary Clamp, Clip-on™ Socket – UK Side Bar	10245
Rotary Clamp, Clip-on™ Socket – EU Side Bar	10246
Rotary Clamp, Socket – Stainless Steel for UK and EU Side Bar	10248
Clamp, Basic Blade Handwheel for UK and EU Side Bar	10761
Clamp, Clip-on™ Blade Handwheel for UK Side Bar	10763
Clamp, Clip-on™ Blade Handwheel for EU Side Bar	10764

Description	Code
Shoulder Supports c/w Pads and Clamps	10787
Shoulder Supports Replacement Pads (left and right)	10706
Nissen Thigh Straps for UK Side Bar c/w Integrated Clamps	10781
Nissen Thigh Straps for EU Side Bar c/w Integrated Clamps	10781-EU
Nissen Straps, Bariatric / Thigh Retractors for UK Side Bar c/w Integrated Clamps	10782
Nissen Straps, Bariatric / Thigh Retractors for EU Side Bar c/w Integrated Clamps	10782-EU

Disposables

We offer Tritón – an absorbent, impermeable, and disposable sheet developed specifically for use in theatre.

It prevents the operating table from becoming soiled or wet, while keeping the patient's skin completely dry.

Particularly useful for operating tables and delivery beds, it prevents contamination and reduces the need for strong disinfectants which can damage mats and table parts. It is also ideal for tables used for gynaecological examinations and urology procedures.

In addition to Tritón sheets we offer sterile drapes specifically designed for Lift-Assist™ Lithotomy Stirrups. Details available on request.

Description	Code
Tritón Impermeable and Absorbent Half Table Sheet 1400 x 1000mm, Disposable (box of 40)	55814



Surgical access – patient stability

Providing the best possible surgical access while maintaining patient stability are particularly important in procedures involving the foot and leg.

All of our products have been designed to accommodate these aspects together with the need for pressure care.

Arthroscopic Legholder

The Arthroscopic Legholder immobilises the thigh and allows for lower leg manipulation during knee arthroscopy.

A removable slotted post facilitates the placement of the patient's leg into the holder while the stabilising bar restricts upper leg movement during knee manipulation.



The device has a patient weight capacity of 227kg and comes with three disposable pads and with additional packs of 12 available to purchase separately.

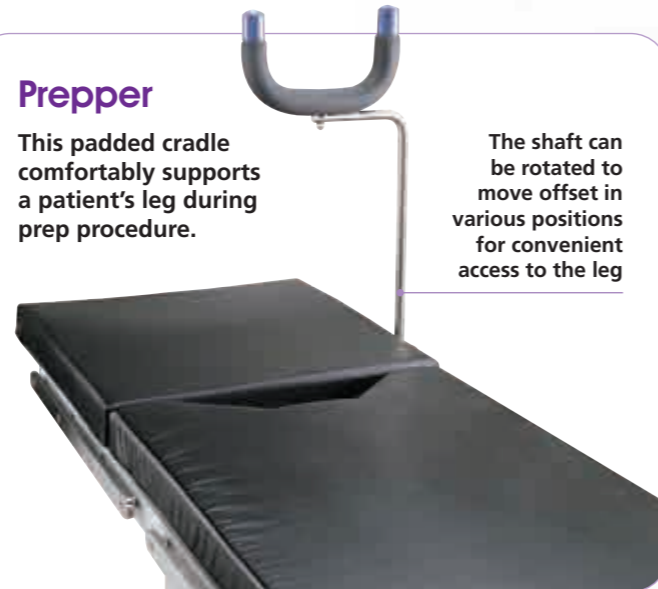


Description	Code
Deluxe Arthroscopic Legholder System c/w Disposable Pads x3	10780
Deluxe Arthroscopic Legholder System Replacement Pads (pack of 12)	10780-A1

Prepper

This padded cradle comfortably supports a patient's leg during prep procedure.

The shaft can be rotated to move offset in various positions for convenient access to the leg



Description	Code
The Prepper™ Device c/w Pad	10798
The Prepper™ Device Pad ONLY	10798-A1

Knee Stabiliser

A convenient, stable device to support the flexed leg during total knee procedures, the Knee Stabiliser eliminates awkward sandbags and simply mounts to the table rail.

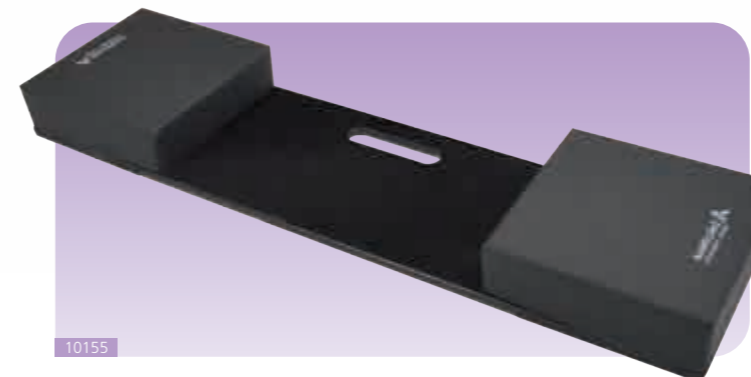
The 300mm long by 100mm diameter foot support is covered with a fabricated, replaceable closed-cell foam pad. The 360mm long mounting bar permits vertical height adjustment whilst the flat 6mm x 30mm cross section prevents unwanted rotation.



Description	Code
Arthroscopic Stress Post c/w Fitted Pad	10776
Arthroscopic Stress Post Pad, Rectangular – Off-set Hole	10708
Knee Stabiliser c/w Pad	10785
Knee Stabiliser/Pelvic Support Pad ONLY	10206

Abduction Board

The Anetic Aid Abduction Board fits under the mattress of the operating table or trolley providing K8 Pressure Care extension pads for the patient's heels after their legs have been abducted for procedures such as Varicose Vein removal.



- Integral handle – easy to carry
- K8 pressure care for patient heels
- Easy to clean, wipeable material

Description	Code
Abduction Board (varicose vein) 75mm Mattress c/w Pads	10155
Abduction Board (varicose vein) 75mm Mattress Pads ONLY	10156

Well-leg Holder

Our Well-leg Holder is the perfect solution when a patient's non-operative leg needs to be secured in position so as not to impede surgical access to the operative limb.

The equipment comprises a steel rod and a padded boot secured with hook and loop fastening.



Description	Code
Arthroscopic Well-leg Holder c/w Boot Pad ONLY	10778

Clamps

Description	Code
Rotary Clamp, Clip-on™ Socket – UK Side Bar	10245
Rotary Clamp, Clip-on™ Socket – EU Side Bar	10246
Rotary Clamp, Socket – Stainless Steel for UK and EU Side Bar	10248
Universal Clamp, Socket and Rail for UK and EU Side Bar	10250
Clamp, Basic Blade Handwheel for UK and EU Side Bar	10761
Clamp, Clip-on™ Blade Handwheel for UK Side Bar	10763
Clamp, Clip-on™ Blade Handwheel for EU Side Bar	10764

Specialist Protection for Heels

The anatomy of the heel – its combination of nerves and lack of soft tissue over the bone – make it one of the most vulnerable parts of the body during surgery, particularly when the patient is in a prone position.

We offer a wide range of protective pressure care.

Oasis+ heel supports are made from a medical grade siloxane elastomer, one of the most durable materials on the market today.

The design allows the full foot to be in a resting position while also relieving all pressure from the calcaneal aspect of the heel.

- Over 30% lighter than similar products on the market
- Comfort and support for the patient
- Hypoallergenic and anti-slip
- Autoclavable



10940



10945

Oasis+ Heel Supports

Description	Code
Heel Protectors x2, 127 x 162 x 71mm (Oasis+)	10940
Heel Pads x2, 151 x 134 x 66mm (Oasis+)	10945

Oasis Heel and Ankle Protectors

Description	Code
Heel and Ankle Protectors x2, 250 x 120 x 10mm (Oasis)	10853



Heel Pads

Description	Code
Heel Pads x2, 180 x 100 x 70mm (Oasis)	10845



Heel Cups

Description	Code
Heel Cups x2 (Oasis)	10846
Heel Cups, case of 36 pairs (Oasis)	10848



Heel Pads

Description	Code
Heel Pads x2, 180 x 100 x 70mm (Elite)	10875



Heel Protectors

Description	Code
Heel Protectors x2, 190 x 175 x 30mm (Azure)	10891



Additional Accessories



Description	Code
Leg Protector 515 x 180 x 40mm (Azure)	10892



Description	Code
Lateral Leg Positioner 650 x 400 x 230mm (Elite)	10992



As well as our ranges for specific procedures, we have many general operating table and theatre accessories.

They are designed and produced using the latest materials and manufacturing techniques and members of our qualified sales team are available for consultation and can often provide samples on site for appraisal.

Accessory Trolley

Accessories need storage when not in use – and we have the perfect solution.

Our Accessory Trolley is a compact, mobile storage system which helps to keep a busy theatre environment tidy and uncluttered.

- Adaptable
- Robust
- Multi-functional
- UK or EU Side Bar options



Description	Code
Accessory Trolley, UK Side Bar	21370
Accessory Trolley, EU Side Bar	21370E



Designed and produced using the latest materials and manufacturing techniques

Wide Portfolio of Items

Specialisms aside, there are a huge number of general operating table accessories to be found in Anetic Aid's portfolio – from tube holders and screens to clamps, bean bags and stool cushions.

Many of them are designed and produced at our manufacturing base in Portsmouth, where members of our engineering and production team ensure that they are all made with the same attention to detail and rigorous quality procedures as our sophisticated trolley and tourniquet systems.

We also seek out state-of-the-art accessories from other specialists in the field who have the same ethos and philosophy as Anetic Aid – innovative technology, practically applied.

Please ask to see a member of our qualified sales team for a consultation to discuss your specific requirements.



Call us on: 01943 878647

Miscellaneous



Our rubber ferrules are anti-slip and easy to clean.

We offer two sizes, both sold in packs of five.

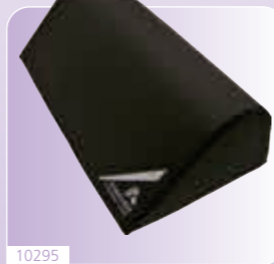


Description	Code
Rubber Ferrules, 19mm (pack of 5)	10270
Rubber Ferrules, 25mm (pack of 5)	10271
Security Strap, Medium c/w Padded Centre Section NO HOOKS	10792
Security Strap, Large c/w Padded Centre Section NO HOOKS	10793
Security Strap Hooks (single unit)	10794
Table Width Extender 100 x 510mm for UK Side Bar c/w 75mm Pad	10788
Table Width Extender 100 x 510mm for EU Side Bar c/w 75mm Pad	10788-EU

General Positioners



10290



10295



10545



10550



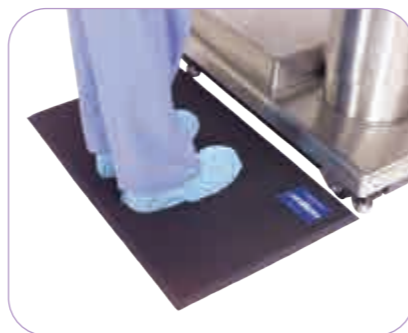
10555

Description	Code
Covered Foam Leg Trough 600mm	10285
Abduction Wedge, Hip Extension c/w Straps	10290
D-shaped Knee Support	10295
Theatre Pillow	10545
Crawford Wedge, Small 550 x 300 x 100mm	10550
Crawford Wedge, Large 550 x 510 x 200mm	10555
The Prepper™ Device c/w Pad	10798

Comfort Mat

We have a special comfort mat for surgeons, nurses and medical technicians working in theatre.

It is an ergonomic solution designed to combat fatigue and discomfort by providing a softer and more supportive surface to stand on.



Description	Code
Comfort Mat 510 x 480mm	10797

Suture Snooper

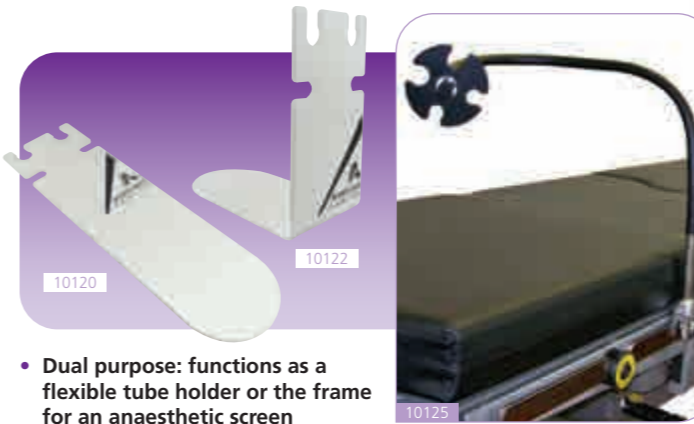
It doesn't happen often, but if a suture needle drops onto the floor during a procedure, it's obviously essential to find it – and find it quickly.



Our magnetic 'Suture Snooper' is the perfect solution, reaching into awkward corners or under equipment – especially the operating table – easily and effectively.

Description	Code
Suture Snooper	10796

Tube and Screen Holders



Dual purpose: functions as a flexible tube holder or the frame for an anaesthetic screen

Description	Code
Anaesthetic Tube Holder, Flat	10120
Anaesthetic Tube Holder, Angled	10122
Anaesthetic Screen c/w Pad	10190
Anaesthetic Screen ONLY	10191
Anaesthetic Screen Sleeve	10192
Omni Directional Tube Holder / Anaesthetic Screen	10125

Clamps



Surgeon's Seating

Our gas-lift stools are made in a modular design which allows customers to choose the exact specifications to meet their needs.



Foot-operated to allow adjustment without compromising the sterile field

We have maintained a simple form by enclosing the mechanism inside a moulded cover and all metalwork is mirror polished with a specialist heavy duty Teflon® coated finish on the base.

Description	Code
Surgeon's Stool with Castors c/w Cushion	25300
Surgeon's Stool with Stump Feet c/w Cushion	25310
Surgeon's Stool Backrest c/w Pad	25320
Surgeon's Stool Armrests c/w Pads (pair)	25330

Pressure Care Pads are fitted as standard with spares available for both cushions and backrests.

Description	Code
Surgeon's Stool Cushion 330mm diameter	10130
Surgeon's Stool Cushion 380mm diameter	25340
Surgeon's Stool Backrest Pad 350 x 150mm	10135
Surgeon's Stool Backrest Pad 260 x 200mm	25350

Description	Code
Rotary Clamp, Clip-on™ Socket – UK Side Bar	10245
Rotary Clamp, Clip-on™ Socket – EU Side Bar	10246
Rotary Clamp, Socket – Stainless Steel for UK and EU Side Bar	10248
Universal Clamp, Socket and Rail for UK and EU Side Bar	10250
Clamp, Basic Blade Handwheel for UK and EU Side Bar	10761
Clamp, Clip-on™ Blade Handwheel for UK Side Bar	10763
Clamp, Clip-on™ Blade Handwheel for EU Side Bar	10764

Patient Positioning with Stable and Comfortable Vacuum Bean Bags

Another option for patient positioning is our range of Snow-Pac vacuum bean bags.

Available in a number of shapes and sizes, Snow-Pacs are soft pads filled with thousands of tiny plastic beads.

The patient is placed in position and the Snow-Pac moulded around them before a suction line is attached to it. As a vacuum is created inside the Snow-Pac, outside atmospheric pressure forces the beads together so they cannot move.

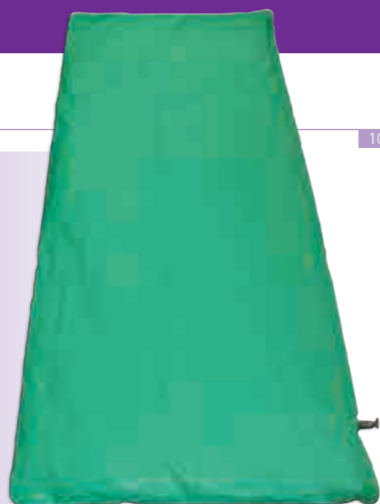
When the suction line is disconnected, the Snow-Pac retains its firm, moulded shape and holds the patient securely in position.

After the procedure, the valve on the Snow-Pac is opened and as air re-enters the bean bag, it becomes soft again for easy removal.

Clean, disinfect, sterilise:

Snow-Pac Vacuum Bean Bags can be cleaned with regular soaps and liquid disinfectants or sterilised by gas.

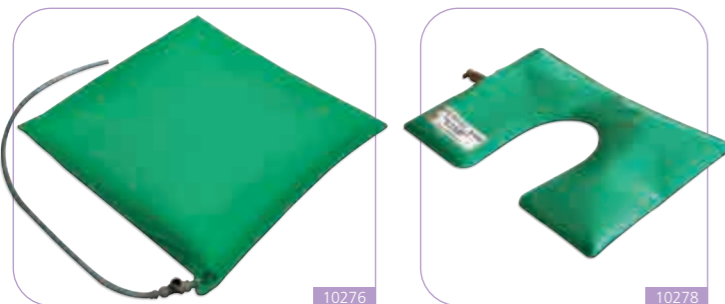
- Stable and comfortable patient positioning for excellent surgical access
- Patient weight distributed evenly like a floating mattress
- Quick and easy application, with repositioning during a procedure also possible



Description	Code
Vacuum Beanbag Positioner, Long Body 1000 x 900mm	10274
Vacuum Beanbag Positioner, Full Body 1000 x 730mm	10275
Vacuum Beanbag Positioner, Square 500 x 500mm	10276
Vacuum Beanbag Positioner, Rectangular 460 x 230mm	10277
Vacuum Beanbag Positioner, Head Stabiliser 400 x 300mm	10278
Vacuum Beanbag Positioner, Full Length 1650 x 720mm	10279

Vacuum Beanbag Positioners

Vacuum filled beanbags: available in a range of shapes and sizes from full body to head stabilisers.



Suitable for any vacuum source including wall suction or aspirator pump

Reusable rubberised vinyl fabric is soft but durable

Radiolucent excellent radio-transparency with only minimal and clearly identifiable artifacts

Pre-operative Glove

Designed to meet the needs of healthcare professionals when pre-op hair removal is necessary, reducing the risk of surgical site contamination and post-procedural infections.

Description	Code
Pre-operative Glove, Adhesive – Single-use (box of 500)	11000



Sandbags

We have small, medium and large Sandbags in stock, and can also supply Sandbags to your own dimensions.

Call **01943 878647** for details.

Description	Code
Sandbag, Small 200 x 150mm	10255
Sandbag, Medium 300 x 200mm	10256
Sandbag, Large 380 x 250mm	10257



Minimising the risk of pressure sores and infection

In the UK, dealing with pressure sores accounts for about 4% of national healthcare expenditure and the risk of pressure sores during surgery is well documented.

Yet it is also widely recognised that in most cases, pressure ulcers are preventable – so having the appropriate equipment and techniques for dealing with surgical patients is a top priority. For over ten years, Anetic Aid has been the sole UK distributor for Trulife's Oasis, Oasis Elite, Oasis+ and Azure ranges of high quality gel pads and positioning devices.

- X-ray translucent
- MRI compatible
- Reusable
- Medical grade silicone
- Latex free
- Different budget options
- Extensive range

Trulife has produced an educational DVD to help healthcare practitioners in selecting the most effective product along with demonstrating the best technique for protecting patients, whatever their positioning requirement for surgery.



See the film at: trulife.com/videos and select 'Trulife Surgical from Trulife' on **vimeo**.

Oasis The Original Silicone Solution

Oasis is an extensive range of reusable 100% silicone gel pads. The silicone is softer than both skin and underlying tissue which means that pressure is relieved by the slight movement of the silicone gel and resulting dissipation of pressure/force across the product.



- Silicone superior pressure relief
- Conforms to body shape
- Latex free and skin compatible
- Comprehensive range
- Can be heated or cooled

Oasis elite Light weight and pre-contoured

The Oasis Elite range combines silicone gel and light weight foam with a pre-contoured surface to provide superior pressure relief and patient protection in theatre. Anatomical pre-contouring facilitates greater conformity between gel and body shape; weight is then redistributed over a larger area. Oasis Elite products are more than 50% lighter than comparable gel-only products.



- Foam and silicone gel combination
- Enhanced protection
- Light weight
- Highly durable
- Easy to clean and maintain

Oasis+ Ultimate pressure relief and positioning

Oasis+ products are made from a medical grade siloxane elastomer. Additional durability is ensured because the products have no outer film, making this an entirely unique product range. The ergonomic design of the product promotes the ultimate in pressure relief. In addition, the material has anti-slip properties, helping to provide comfort and support to the patient.



- Medical grade siloxane elastomer
- No outer film ensures exceptional durability
- Ergonomic design
- Easy to clean and fully autoclavable
- Anti-slip properties

Azure Redefining pressure care

The Azure range is the most advanced and innovative available in theatre today, offering the best pressure redistribution. Each product consists of two independent protective silicone layers that work in combination, allowing the moulded products to effectively conform to the individual user's shape in a more contoured and less structured manner, resulting in effective protection against nerve damage and skin breakdown.



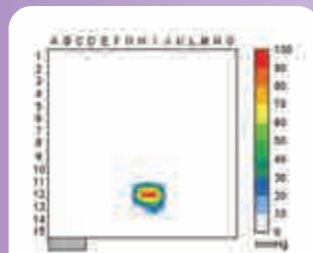
- Revolutionary new gel combination
- Contoured protection
- Redefining pressure care
- Advanced surgical positioning and protection
- 12 month guarantee

Exclusive distribution of Trulife products across the UK



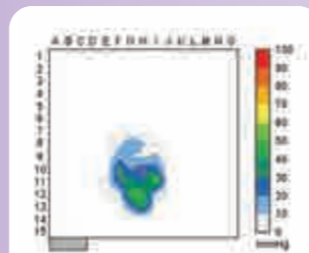
Oasis reusable silicone gel pads and positioners provide superior pressure relief to the patient during various surgical procedures.

The gel evenly distributes body weight, essential for the relief of pressure during surgery. All Oasis products can be heated or cooled and have an X-ray attenuation of 89.7%. They have a 12 month guarantee against manufacturing defects.



Head without protective pad

Average pressure 64.1mmHg



Head with protective pad

Average pressure 19.7mmHg



Closed Head Rings



Description	Code
Closed Head Ring, Paediatric 90 x 40 x 20mm (Oasis)	10801
Closed Head Ring, Adolescent 140 x 35mm (Oasis)	10802
Closed Head Ring, Adult 200 x 75 x 45mm (Oasis)	10803

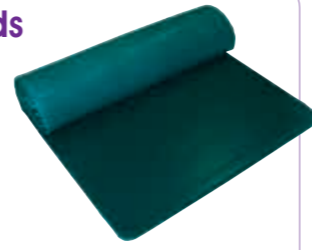
Open Head Rings



Description	Code
Open Head Ring, Paediatric 90 x 22mm (Oasis)	10804
Open Head Ring, Adolescent 140 x 35mm (Oasis)	10805
Open Head Ring, Adult 200 x 50mm (Oasis)	10806

Operating Table Pads

Description	Code
Operating Table Pad 520 x 520 x 10mm (Oasis)	10807
Operating Table Pad 1150 x 520 x 10mm (Oasis)	10808
Operating Table Pad 1800 x 520 x 10mm (Oasis)	10809



10809

Hip Pad

Description	Code
Hip Pad 520 x 520 x 10mm (Oasis)	10811



Table Pads

Description	Code
Table Pad, Head Section 500 x 225 x 10mm (Oasis)	10812
Table Pad, Torso Section – Perineal 500 x 990 x 10mm (Oasis)	10813
Table Pad, Foot Section 500 x 500 x 10mm (Oasis)	10814
Table Pad Set, 3-piece (Oasis)	10815



10815

Perineal Pad

Description	Code
Perineal Table Pad 520 x 520 x 10mm (Oasis)	10816



Crutch Stirrup Pads



Description	Code
Crutch Stirrup Pads x2, Medium 320 x 220 x 10mm (Oasis)	10838
Crutch Stirrup Pads x2, Large 395 x 245 x 10mm (Oasis)	10839
Crutch Stirrup Pads x2, XL 520 x 300 x 10mm (Oasis)	10840

Profile Pads



Description	Code
Profile Pad 520 x 520 x 12mm (Oasis)	10817
3/4 Length Profile Pad 1145 x 520 x 12mm (Oasis)	10818

Silicone superior pressure relief

Conforms to body shape

Latex free and skin compatible

Comprehensive range

Can be heated or cooled

Oasis First Aid Kit

The Oasis First Aid kit is a temporary solution for accidental splitting of Oasis/Azure products during surgery.

Each kit contains five sheets of highly durable adhesive film which are easily applied to gel products. Instructions for use are included on the packaging.



Description	Code
Oasis First Aid Kit	10858
Discs (10 per box) Oasis+	10859

Miscellaneous



10849

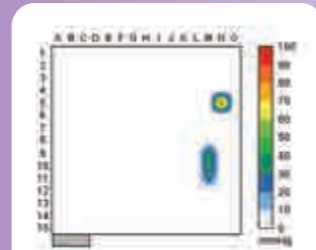
Description	Code
Face Pad 165 x 80 x 8mm (Oasis)	10849
Perineal Post Pad 300 x 260 x 10mm (Oasis)	10851
Traction Boot Pad 370 x 240 x 5mm (Oasis)	10852
Wilson Frame Pads 255 x 735 x 10mm (Oasis)	10857

Excellent pressure relief at all risk levels – can be heated or cooled



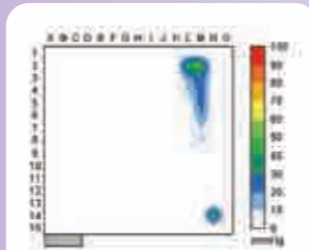
A pressure sore is an area of localised damage to the skin and underlying tissue caused by pressure, shear, friction or a combination of all three.

Bony prominences are most susceptible to damage which means that the elbows and heels are particularly vulnerable – and the Oasis range offers a number of products specifically designed for these areas.



Arm without protective pad

Average pressure 35.9mmHg



Arm with protective pad

Average pressure 23.1mmHg

Patient Positioners



Description	Code
Patient Positioner, X Small 150 x 60 x 40mm (Oasis)	10823
Patient Positioner, Small 330 x 70 x 50mm (Oasis)	10824
Patient Positioner, Medium 290 x 100 x 60mm (Oasis)	10825
Patient Positioner, Large 345 x 120 x 70mm (Oasis)	10826

Silicone superior pressure relief

Conforms to body shape

Latex free and skin compatible

Comprehensive range

Can be heated or cooled

Ulnar/Brachial Nerve Protectors

The Oasis Ulnar/Brachial Nerve Protectors provide essential pressure care protection for the sensitive areas of the elbows and arms.



10828



10829

Description	Code
Ulnar/Brachial Nerve Protector 380 x 115 x 8mm (Oasis)	10828
Ulnar/Brachial Nerve Protector 460 x 210 x 8mm (Oasis)	10829

Armboard Pads and Retainer Covers



10830



10831



10833

Description	Code
Armboard Pad 390 x 115 x 10mm (Oasis)	10830
Large Armboard Pad 600 x 200 x 10mm (Oasis)	10831
Armboard Pad, Long 600 x 125 x 10mm (Oasis)	10832
Contoured Armboard Pad 510 x 150 x 35mm (Oasis)	10833
Arm Retainer Cover 170 x 110 x 18mm (Oasis)	10834
Arm Retainer Cover, Wide 157 x 128 x 15mm (Oasis)	10835



Ankle and Heel Protectors

The anatomy of the heel – its combination of nerves and lack of soft tissue over the bone – make it one of the most vulnerable parts of the body during surgery, particularly when the patient is in a prone position.

The Oasis range offers specialist pressure care:



10845



10853



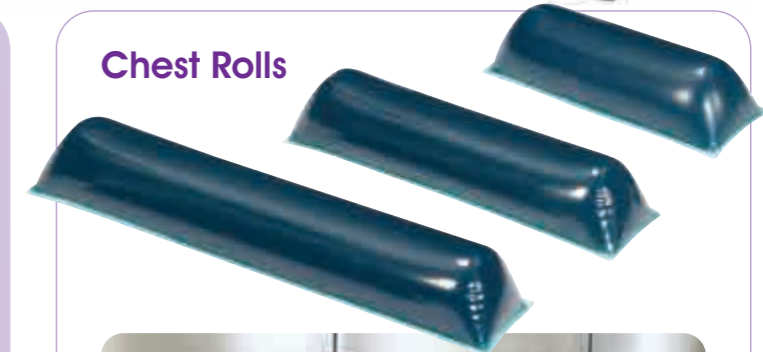
10846

- Comfort and support for the patient

- Over 30% lighter than similar products on the market

- Hypoallergenic and anti-slip

Chest Rolls



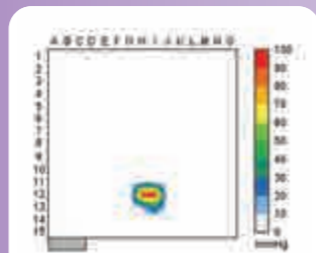
Description	Code
Chest Roll, Flat Bottom 305 x 95 x 75mm (Oasis)	10854
Chest Roll, Flat Bottom 405 x 95 x 75mm (Oasis)	10855
Chest Roll, Flat Bottom 505 x 92 x 75mm (Oasis)	10856

Description	Code
Heel Pads x2, 180 x 100 x 70mm (Oasis)	10845
Heel Cups x2 (Oasis)	10846
Heel Cups, box of 36 pairs (Oasis)	10848
Heel and Ankle Protectors x2, 250 x 120 x 10mm (Oasis)	10853



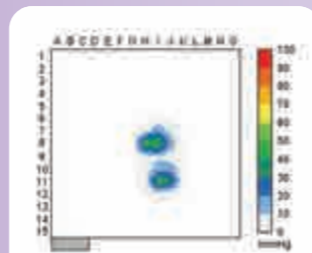
Oasis Elite products combine a unique light weight foam with silicone Trugel™ to provide superior pressure relief and enhanced patient protection in theatre.

They are more than 50% lighter than comparable gel-only products and are easy to clean and maintain.



Head without protective pad

Average pressure 64.1mmHg



Head with protective pad

Average pressure 11.4mmHg

Head Rings



Description	Code
Closed Head Ring, Adolescent 140 x 34mm (Elite)	10861
Closed Head Ring, Adult 200 x 50mm (Elite)	10862
Open Head Ring, Adolescent 140 x 34mm (Elite)	10863
Open Head Ring, Adult 200 x 54mm (Elite)	10864

Head Rests



Description	Code
Prone Head Rest, Adult 280 x 235 x 150mm (Elite)	10871
Prone Head Rest, Adolescent 273 x 220 x 135mm (Elite)	10872
Supine Head Rest, Adult 275 x 237 x 90mm (Elite)	10873
Supine Head Rest, Adolescent 275 x 230 x 65mm (Elite)	10874

Table and Armboard Pads

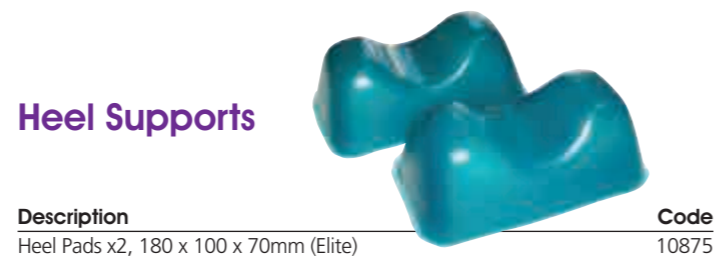


- Anatomically shaped pad provides added support and stability to the arm in a variety of procedures

- Providing the necessary protection whenever the arm is extended on an armboard

Description	Code
Table Pad 520 x 520 x 30mm (Elite)	10865
3/4 Table Pad 1150 x 520 x 20mm (Elite)	10866
Armboard Pad 400 x 125 x 20mm (Elite)	10867
Armboard Pad 600 x 125 x 20mm (Elite)	10868
Contoured Armboard Pad 510 x 150 x 35mm (Elite)	10869
Contoured Armboard Pad 395 x 140 x 40mm (Elite)	10870

Heel Supports



Description	Code
Heel Pads x2, 180 x 100 x 70mm (Elite)	10875

Stability and pressure care in the lateral position

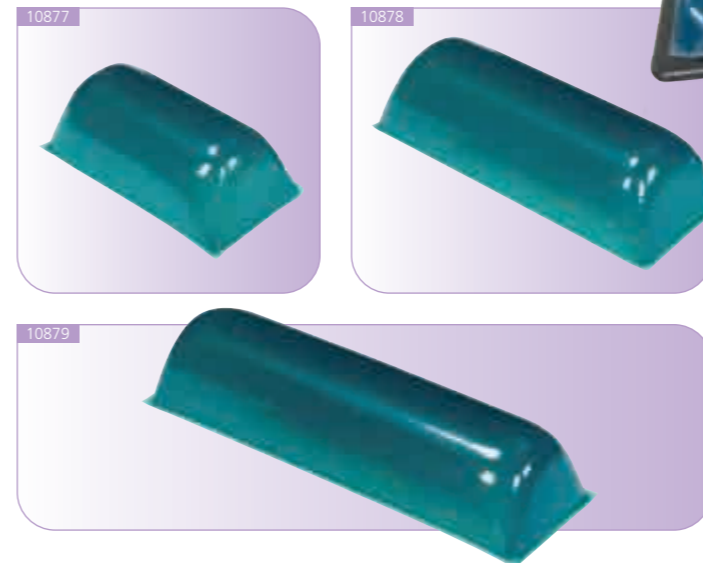
Major procedures which require lateral positioning, such as nephrectomy and hip replacement, require total stability and pressure care.

The Oasis Elite Lateral Positioner enables a safe, quick and easy transition from supine to lateral positions: the patient's lower shoulder fits into the integral channel to provide exceptional patient comfort and nerve protection, while the built-in headrest and auxiliary support assists in proper spinal alignment and surgical site access.



- Stability and pressure care combined
- Easy transition from supine to lateral
- Patient comfort and nerve protection

Chest Rolls



Description	Code
Chest Roll 300 x 140 x 110mm (Elite)	10877
Chest Roll 400 x 140 x 110mm (Elite)	10878
Chest Roll 505 x 140 x 110mm (Elite)	10879
Chest Roll 405 x 150 x 150mm (Elite)	10880
Chest Roll 510 x 150 x 150mm (Elite)	10881

Positioners



Description	Code
Dome Positioner 350 x 150 x 75mm (Elite)	10876
Lateral Positioner 720 x 500 x 160mm (Elite)	10882
Prone Chest Positioner 610 x 130 x 530mm (Elite)	10883
Prone Positioning System 675 x 500 x 100mm (Elite)	10884
Montreal Laminectomy Support (Elite)	10990
Lateral Leg Positioner 650 x 400 x 230mm (Elite)	10992

Silicone superior pressure relief

Conforms to body shape

Latex free and skin compatible

Comprehensive range

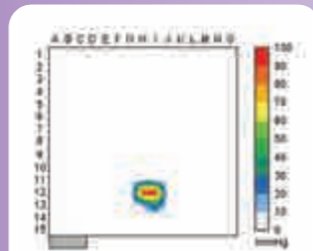
Can be heated or cooled

Unique light weight foam and silicone Trugel™ for superior pressure relief



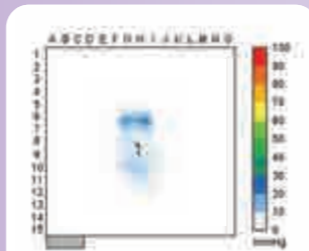
Oasis+ offers the ultimate in pressure relief and positioning: the products are fully autoclavable and reusable, as well as being ergonomically designed, with a special anti-slip base.

Developed following in-depth research, Oasis+ products are made from a medical grade siloxane elastomer. They have additional durability because they have no outer film, making this an entirely unique product range.



Head without protective pad

Average pressure **64.1mmHg**



Head with protective pad

Average pressure **10.3mmHg**

Heel Supports

As well as Heel Protectors, we now have new Heel Pads in the Oasis+ range, offering the ultimate in pressure relief.

The design allows the full foot to be in a resting position while also relieving all pressure from the calcaneal aspect of the heel.

The pad has hypoallergenic and anti-slip properties to provide comfort and support for the patient.



10940

Description	Code
Heel Protectors x2, 127 x 162 x 71mm (Oasis+)	10940
Heel Pads x2, 151 x 134 x 66mm (Oasis+)	10945



- Light and durable
- Anatomically designed for better pressure relief

10945

Discs

Oasis+ Discs help to keep gel products in place and aid slip reduction.

Available in a single size, they can be used with any Trulife product range.

Oasis+ Discs come in boxes of 10.



Description	Code
Disc 200 x 200 x 4mm, box of 10 (Oasis+)	10975

- Medical grade siloxane elastomer
- No outer film ensures exceptional durability
- Ergonomic design for effective pressure relief
- Easy to clean and fully autoclavable
- Anti-slip properties for patient comfort and support



Short Armboard Pad

This ergonomic support has a subtle recess to cradle the arm: it can bend and conform to different arm positions.

The product is also rollable, to facilitate a neutral hand position if required.



10920

Description	Code
Armboard Pad, Short 395 x 134 x 10mm (Oasis+)	10920

Long Armboard Pad

The Long Armboard Pad completely relieves pressure on the elbow with a full recess. It can also bend and conform to different arm positions.

Raised sides provide defined support and like the Short Armboard, it is rollable, to facilitate a neutral hand position if required.



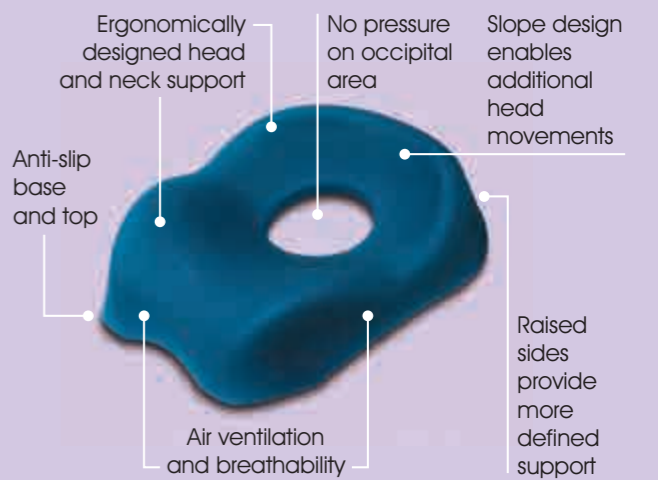
10925

Description	Code
Armboard Pad, Long 500 x 161 x 40mm (Oasis+)	10925

Head and Neck Support

A new product has recently been added to this range – a single piece supine head and neck support.

Made from silicone rubber, one of the most durable materials on the market today, it is an excellent choice for surgical procedures such as middle ear and ophthalmics offering pressure care combined with support and superb stability.



Description	Code
Head and Neck Support 264 x 220 x 64mm (Oasis+)	10900

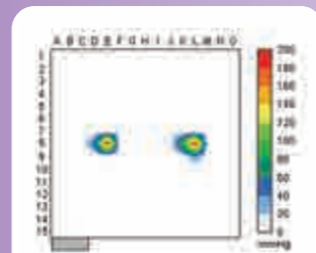
Unique range: no outer film means additional durability



Azure's revolutionary gel combination works together to replicate and act as an additional layer of protective tissue and skin.

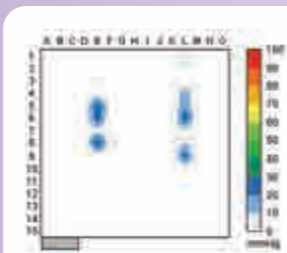
It conforms to the individual user's shape in a more contoured and less structured manner. This results in effective protection against nerve damage as well as pressure sore prevention.

Azure products are redefining pressure care and are set to change the standards in theatre.



Heels
without protective pads

Average pressure 65.2mmHg



Heels
with protective pads

Average pressure 13.9mmHg



Head Protector

The dual layer Azure Head Protector is innovatively designed to contour to the individual patient's head, conforming comfortably while providing effective protection to the patient.



Description	Code
Head Protector 260 x 250 x 50mm (Azure)	10885

- Silicone superior pressure relief
- Conforms to body shape
- Latex free and skin compatible
- Comprehensive range
- Can be heated or cooled

Protectors



10891

The heel area is one of extreme risk during any surgical procedure and special attention should be given to avoid any unnecessary damage.

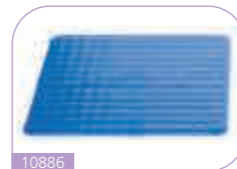
- These light weight protectors provide heel protection as well as stability and support



10892

Description	Code
Heel Protectors x2, 190 x 175 x 30mm (Azure)	10891
Leg Protector 515 x 180 x 40mm (Azure)	10892

Operating Table Pads



10886



10887

Description	Code
Profile Pad 520 x 520 x 10mm (Azure)	10886
Profile Pad 1150 x 520 x 10mm (Azure)	10887
Operating Table Pad 520 x 520 x 10mm (Azure)	10895

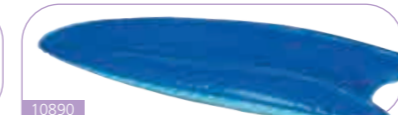


Arm Protectors

The Azure Arm Protector assumes the shape of the individual patient's arm, acting as a second layer of tissue and offering excellent protection against nerve damage.



10889



10890

Description	Code
Arm Protector, Short 330 x 140 x 30mm (Azure)	10889
Arm Protector, Long 460 x 180 x 35mm (Azure)	10890

Sacral Protector

The Sacral area is an area of serious risk if left unprotected.

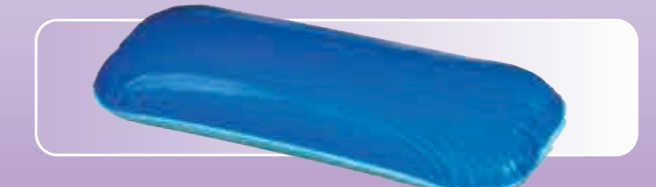
The Azure Sacral Protector has been designed to provide support in the supine and lithotomy positions by relieving pressure and focussing on peripheral support.



Description	Code
Sacral Protector 400 x 380 x 25mm (Azure)	10888

Patient Positioner

This versatile and light weight product can be used to position and protect the patient in a variety of surgical procedures.



Description	Code
Patient Positioner 425 x 155 x 60mm (Azure)	10893

Unique gel combination acts as an additional layer of protective tissue and skin



Gel Positioning Purchase Guide

SUPINE position

- Administration of General Anaesthesia
- Abdominal surgery
- Open heart surgery
- Surgery of the face, neck or mouth
- Most surgery on extremities



The patient is on their back with their face up towards the ceiling. Their legs are uncrossed and their arms are at their sides, or on arm boards. (Includes Trendelenburg and reverse Trendelenburg)

Head



10801-10803



10885

Description	Code
Closed Head Ring	10801 10802 10803 10861 10862
Face Pad	10849
Supine Head Rest	10873 10874
Head Protector	10885
Supine Head and Neck Support	10900

Arm and Hand



10828



10829

Description	Code
Ulnar/Brachial Nerve Protector	10828 10829
Armboard Pad	10830 10831 10832 10833 10867 10868 10869 10870
Arm Retainer Cover	10834 10835
Arm Protector	10889 10890

Torso



10893



10888

Description	Code
Operating Table Pad	10807 10808 10809 10865 10895
Hip Pad	10811
Table Pad Sections	10812 10813 10814 10815 10816 10866
Profile Pad	10817 10818 10886 10887
Patient Positioner	10823 10824 10825 10826 10893
Patient Positioning Belt	10842
Perineal Post Pad	10851
Chest Roll	10854 10855 10856 10877 10878 10879 10880 10881
Dome Positioner	10876
Sacral Protector	10888

Leg and Foot



10892

Description	Code
Heel Pads	10845 10875
Heel Cups	10846 10848
Traction Boot Pad	10852
Heel and Ankle Protectors	10853 10891
Leg Protector	10892
Heel Supports	10945

Gel Positioning Purchase Guide



PRONE position

- Surgeries to the back, spine and the backs of the legs



The patient is on their abdomen and their arms are at their sides or on armboards. (Includes Kraske 'Jack Knife' position)

Head

Description	Code
Open Head Ring	10804 10805 10806 10863 10864
Prone Head Rest	10871 10872



10871



10804-10806

Arm and Hand

Description	Code
Ulnar/Brachial Nerve Protector	10828 10829
Armboard Pad	10830 10831 10832 10833 10867 10868 10869 10870
Arm Protectors	10889 10890



10828



10890

Torso

Description	Code
Operating Table Pad	10807 10808 10809 10816 10865 10866 10895
Hip Pad	10811
Table Pad Sections	10812 10813 10814 10815
Profile Pad	10817 10818 10886 10887
Patient Positioner	10823 10824 10825 10826 10893
Relton Frame Pads	10844
Wilson Frame Pads	10857
Chest Roll Flat Bottom	10854 10855 10856
Dome Positioner	10876
Chest Roll	10877 10878 10879 10880 10881
Prone Positioner	10883 10884
Montreal Laminectomy Support	10990



10990

10857

Leg and Foot

Description	Code
Heel and Ankle Protectors	10853 10891
Leg Protector	10892



10891

10892



Scan for Trulife Pressure Care video



Scan for Trulife Pressure Care video



Gel Positioning Purchase Guide

LATERAL position

- Surgery of the chest or lungs
- Surgery on the kidneys
- Hip surgery



The patient is on their side, with their bottom leg flexed and their top leg straight. The bottom arm is supported on an arm board, and the top arm has special support.

Head



10804-10806



Description	Code
Open Head Ring	10804 10805 10806 10863 10864
Head Protector	10885

Arm and Hand

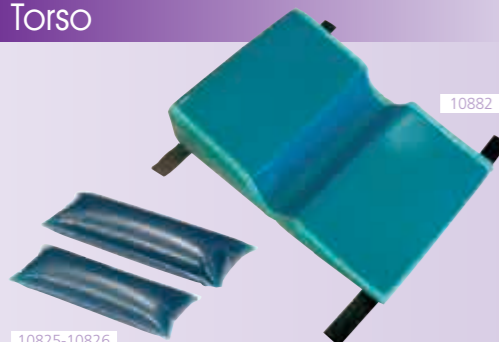


10869

10829

Description	Code
Ulnar/Brachial Nerve Protector	10828 10829
Armboard Pad	10830 10831 10832 10833 10867 10868 10869 10870
Arm Protector	10889 10890

Torso



10825-10826

10882

Description	Code
Operating Table Pad	10807 10808 10809 10865 10895
Hip Pad	10811
Table Pad Sections	10812 10813 10814 10815 10816 10866
Profile Pad	10817 10818 10886 10887
Patient Positioner	10823 10824 10825 10826 10893
Patient Positioning Belt	10842
Dome Positioner	10876
Lateral Positioner	10882

Leg and Foot



10992



10853

Description	Code
Heel and Ankle Protectors	10853
Lateral Leg Positioner	10992

Gel Positioning Purchase Guide



LITHOTOMY position

- Gynaecological surgery
- Genitourinary (GU) surgery



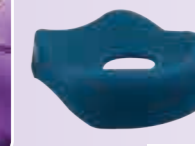
The patient is on their back, their legs are lifted in stirrups and their arms are usually on arm boards.

Head

Description	Code
Supine Head and Neck Support	10900
Closed Head Ring	10801 10802 10803 10861 10862
Face Pad	10849
Supine Head Rest	10873 10874
Head Protector	10885



10800



Arm and Hand

Description	Code
Ulnar/Brachial Nerve Protector	10828 10829
Armboard Pad	10830 10831 10832 10833 10867 10868 10869 10870
Arm Retainer Cover	10834 10835
Arm Protector	10889 10890



10889-10890



Torso

Description	Code
Operating Table Pad	10807 10808 10809 10816 10865 10866 10895
Hip Pad	10811
Table Pad Sections	10812 10813 10814 10815
Profile Pad	10817 10818 10886 10887
Patient Positioner	10823 10824 10825 10826
Patient Positioning Belt	10842
Dome Positioner	10876
Sacral Protector	10888
Patient Positioner	10893



10887



10888



Leg and Foot

Description	Code
Ankle Strap Stirrups	10836 10837
Crutch Stirrup Pads	10838 10839 10840
Heel Pads	10845 10875
Heel Cups	10846 10848
Heel and Ankle Protectors	10853 10891



10846



10839-10840



Scan for Trulife Pressure Care video



Scan for Trulife Pressure Care video

Obstetric Pads and Mattresses

Our K8 pressure care mattresses are ideal for Obstetrics.

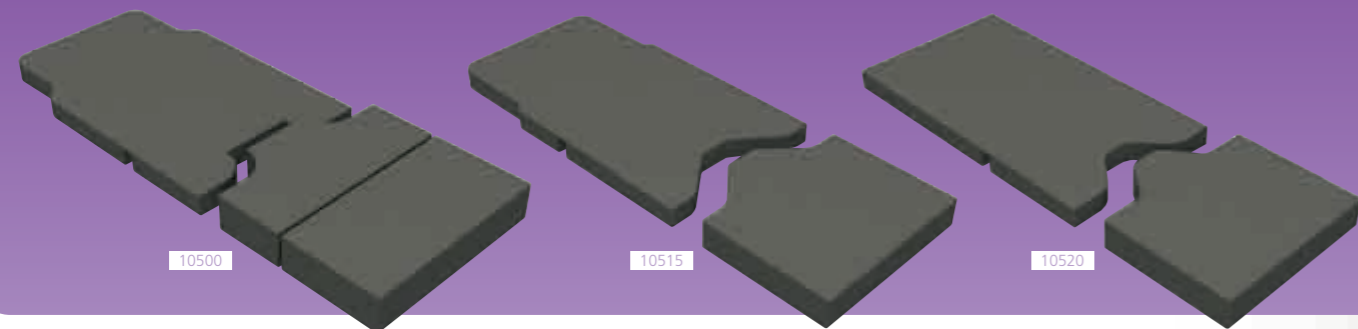
At their core is high density foam, uniquely specified by Anetic Aid. We then add a layer of thermally responsive gel-feel memory foam, which helps to relieve pressure by distributing the patient's weight as evenly as possible across the surface area.

Both of these foam elements have antibacterial and microbial fungistatic properties – but we go further. We add a latex-free, 4-way stretch Polyurethane (PU) outer cover to each mattress (most materials being 2-way stretch), which is made of an anti-microbial, water resistant, vapour permeable material. This means it is not only contamination-resistant, but it also allows the skin to breathe – for greater patient comfort.



Mattresses

Description	Code
Birthday Type Complete Delivery Bed Mattress	10500
Birtright Type Complete Delivery Bed Mattress	10515
Lic' Optima Type Complete Delivery Bed Mattress	10520
EVAB Type Delivery Bed Mattress	10530



Knee Crutch Stirrups

- Positioning stability
- Pressure relief
- Disposable options
- Built-in patient safety

Description	Code
Simplicity™ Knee Crutch Stirrups c/w Boot Pads (pair)	10765
Boot Pads for Simplicity™ Knee Crutch Stirrups (pair)	10766



Lithotomy



Description	Code
Lithotomy Pole c/w Sleeves and Padded Slings	10210
Lithotomy Pole Sleeves ONLY (pair)	10211
Lithotomy Pole Padded Slings ONLY (pair)	10212
Lithotomy Pole Canvas Slings ONLY (pair)	10213
Rotary Clamp, Clip-on™ Socket – UK Side Bar	10245
Rotary Clamp, Clip-on™ Socket – EU Side Bar	10246
Rotary Clamp, Socket – Stainless Steel for UK and EU Side Bar	10248



Positioning Wedges

Description	Code
D-shaped Knee Support	10295
Crawford Wedge, Small 550 x 300 x 100mm	10550
Crawford Wedge, Large 550 x 510 x 200mm	10555

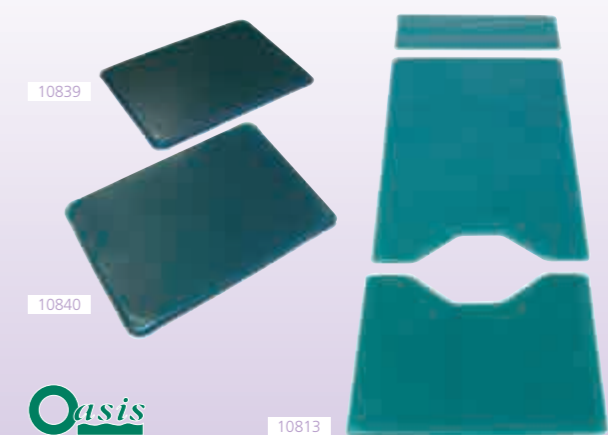
Absorbent Table Sheets

Description	Code
Triton Impermeable and Absorbent Half Table Sheet 1400 x 1000mm, Disposable (box of 40)	55814

Miscellaneous

Description	Code
Stool Cushion 330mm diameter	10130
Backrest Pad 350 x 150mm	10135
Theatre Pillow	10545
Surgeon's Stool Cushion 380mm diameter	25340
Surgeon's Stool Backrest Pad	25350

Pressure Relieving Gel Sections



Description	Code
Table Pad, Torso Section – Perineal 500 x 990 x 10mm (Oasis)	10813
Perineal Table Pad 520 x 520 x 10mm (Oasis)	10816
Crutch Stirrup Pads x2, Large 395 x 245 x 10mm (Oasis)	10839
Crutch Stirrup Pads XL x2, 520 x 300 x 10mm (Oasis)	10840

Description	Code
Sacral Protector 400 x 380 x 25mm (Azure)	10888

Patient positioning which provides both comfort and security

Anetic Aid designs and manufactures a number of accessories for Patient Trolleys. There is also a range of accessories specifically for our own innovative QA3 Patient and Emergency Trolley Systems.

K8 Patient Trolley Mattresses

Pressure care and infection control are top priorities for patient mattresses – and Anetic Aid's independently tested K8 pressure care mattress addresses both of these vital factors.

At its core is high density foam, uniquely specified by Anetic Aid. This means that the mattress can be thinner, while still offering the same, if not better, pressure distribution than a thicker, less sophisticated foam. This is particularly important with trolleys as it means the overall height can be kept as low as possible for easy access by frail or elderly patients.

We then add a layer of thermally responsive gel-feel memory foam, which helps to relieve pressure by distributing the patient's weight as evenly as possible across the surface area – whatever their position.

Both of these foam elements have antibacterial and microbial fungistatic properties – but we go further. We add a latex-free, 4-way stretch Polyurethane (PU) outer cover to each mattress (most materials being 2-way stretch), which is made of an anti-microbial, water resistant, vapour permeable material.

This means it is not only contamination-resistant, but it also allows the skin to breathe – for greater patient comfort.

Finally, our unique ultrasonic sealing system effectively welds the seams of the outer cover material together to give an almost unbreakable seal, making the K8 a class leader in infection control.



In the science of Kinetics, there are eight points of contact the human body makes when lying on a hard surface – hence K8.

Description	Code
K8 Pressure Care Mattress, Hinged 1830 x 560mm	10570
K8 Pressure Care Mattress for Lifeguard Patient Trolley	10580
K8 Pressure Care Mattress 1900 x 560mm	10595
K8 Pressure Care Mattress for Stryker Patient Trolley	10598
QA3 v3.0 K8 Pressure Care Mattress, Standard Cover – Black	21185
QA3 v2.0 K8 Pressure Care Mattress Cover, Standard – Black	21190

As standard – all K8 Patient Trolley Mattresses are supplied as sealed units. Zipped mattress covers are available on request.

High risk pressure care mattress

Independently tested

Latex free

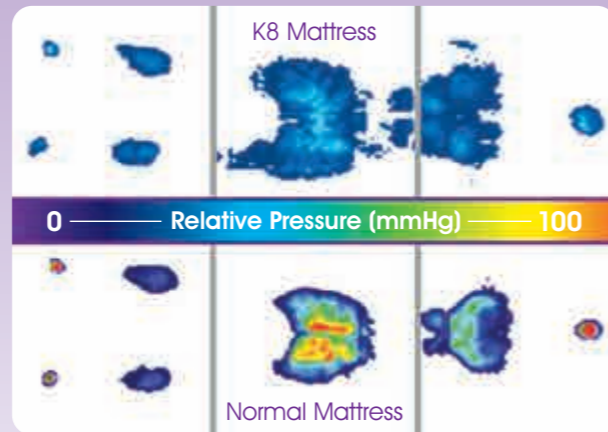
Antibacterial/vapour permeable

Welded seams

X-ray translucent

K8 TECHNOLOGY

Anetic Aid's K8 technology mattresses can be found in over 90% of NHS Hospitals in the UK



Theatre Pillow

Description	Code
Theatre Pillow	10545

Padded Side Rail Covers

Our durable, easy-to-clean Side Rail Covers are another reliable Anetic Aid product which can be used with our own trolley systems and on other models.

We offer a regular version and a padded version, the latter being packed with a soft protective foam. Plain colour or 'Child Print' pattern available.



Description	Code
Padded Side Rail Covers, Small – Blue 1120 x 300mm	10600
Padded Side Rail Covers, Small – Child Print 1120 x 300mm	10601
Padded Side Rail Covers, Medium – Blue 1430 x 400mm	10610
Padded Side Rail Covers, Medium – Child Print 1430 x 400mm	10611
Padded Side Rail Covers, Large – Blue 1830 x 430mm	10620
Padded Side Rail Covers, Large – Child Print 1830 x 430mm	10621

A range of accessories has been specifically designed for Anetic Aid's flagship product: the QA3 Patient Trolley System.



QA3 Patient Trolley System

Description	Code
QA3 Patient Trolley v3.0	21110
QA3 DRIVE Patient Trolley	21112
QA3 DRIVE Powered KneeFlex Patient Trolley	21114
QA3 Emergency Trolley v3.0 with Radiolucent Platform	21120
QA3 DRIVE Emergency Trolley with Radiolucent Platform	21122
QA3 DRIVE Powered Emergency Trolley with Radiolucent Platform	21124

QA3 Accessories

Description	Code
Suction – Injector and Probe for CD and HX Cylinder (complete)	21143
Suction – Emergency Venturi System (complete)	21145
Monitor Shelf – QA3 v3.0 c/w Removable Refreshment Tray	21152
Refreshment Tray ONLY, QA3 v3.0	21152-A1
QA3 v3.0 Emergency Trolley Foot-end Extension	21153
QA3 v3.0 Patient Trolley Lateral Arm Positioner c/w 40mm Pad	21157
QA3 v3.0 Emergency Trolley Lateral Arm Positioner c/w 100mm Pad	21158
QA3 Side Rail, Endoscopy Height Extension Demi-frame	21165
QA3 v3.0 Side Rail Covers, Grey (pair)	21172
QA3 v3.0 Side Rail Covers, Child Print (pair)	21173
QA3 v3.0 K8 Pressure Care Mattress, Standard Cover – Black	21185
QA3 v3.0 K8 Pressure Care Mattress with Zip Cover – Black	21186
Theatre Pillow c/w QA3 Mattress Retention Strap	21188
QA3 v3.0 Foot-end Mattress Protector	21189
QA3 v3.0 and QA4 Trolley Systems Push / Pull Bar	21390
QA3 v3.0 Patient Trolley Foot-end Extension	21395
QA3 v2.0 Side Rail Covers, Grey (pair)	21170
QA3 v2.0 Side Rail Covers, Child Print (pair)	21180
QA3 v2.0 K8 Pressure Care Mattress Cover, Standard – Black	21190



21145



21189



21390



21188



21395



21152

Ask about our Service and Maintenance packages

10 YEARS

LIFETIME WARRANTY

Subject to annual servicing



Accessories that are practical, robust and high quality

A total solution for modern day treatment centres

The QA4 Surgery System is both a patient trolley and an operating table, with powered or manual versions to suit your needs.

Its hallmarks are superior surgical access and versatility: it comes with a choice of head and foot sections and can be used with most operating table accessories making it ideal for general surgery, urology and endoscopy. Anetic Aid also offers a number of other specialist accessories designed specifically for use with this sophisticated yet practical trolley which continues to be unrivalled in today's market.



Description	Code
QA4 Day Surgery Trolley System, Powered Functions	21300
QA4 Day Surgery Trolley System, Manual Functions	21310

Headrests



Description	Code
QA4 Day Surgery Trolley Ophthalmic Headrest	21320
QA4 Surgery Trolley Pad, Sculptured for Ophthalmic Headrest	21321
QA4 Day Surgery Trolley Full Width Headrest, Articulating	21322
QA4 Surgery Trolley Mattress, Full Width – Articulating Headrest	21324

Side Rail Covers

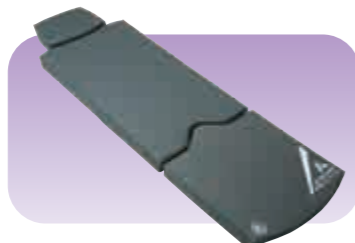
Easy-to-clean Side Rail Covers are available in a standard grey or the popular 'Child Print' for Paediatric environments



Description	Code
QA4 Surgery Trolley Side Rail Covers, Grey – Single Piece (pair)	21347
QA4 Surgery Trolley Side Rail Covers, Child Print – Single Piece (pair)	21348
QA4 Surgery Trolley Side Rail Covers, Grey – Four Piece	21350
QA4 Surgery Trolley Side Rail Covers, Child Print – Four Piece	21351

Mattresses

The QA4 is fitted with a K8 Pressure Care Mattress as standard, but additional sections or full mattresses are also supplied separately.



Description	Code
QA4 Day Surgery Trolley K8 Mattress (complete)	21360
QA4 Day Surgery Trolley K8 Mattress, Body Section ONLY	21360B
QA4 Day Surgery Trolley K8 Mattress, Head Section ONLY	21360H
QA4 Day Surgery Trolley K8 Mattress, Leg Section ONLY	21360L

Leg Sections

There are a variety of optional leg sections for the QA4: UK or EU Side Bar and Articulating or Fixed.

A Foot-end Extension available for procedures such as pain work.



Description	Code
QA4 Surgery Trolley Removable Leg Section, Articulating c/w 105mm UK Side Bar	21355
QA4 Surgery Trolley Removable Leg Section, Articulating c/w 105mm EU Side Bar	21354
QA4 Day Surgery Trolley Leg Section, Articulating	21355
QA4 Day Surgery Trolley Leg Section, Standard with UK Side Rail	21357
QA4 Day Surgery Trolley Leg Section, Standard with EU Side Rail	21357E
QA3 v3.0 Patient Trolley and QA4 Trolley Foot-end Extension	21395

Accessory Trolley



Description	Code
Accessory Trolley, UK Side Bar	21370
Accessory Trolley, EU Side Bar	21370E

Miscellaneous



Handsets for the Powered version of the QA4 can be purchased as additional items



Description	Code
QA4 Day Surgery Trolley Transfusion Pole, Rail Mounted	21312
QA4 Day Surgery Trolley Side Rail, Single Piece (pair)	21345
QA4 Day Surgery Trolley Perineal Instrument Tray c/w Pins	21358
QA4 Day Surgery Trolley Abduction Board (varicose vein)	21359
Oxygen Delivery System	21365
QA3 v3.0 and QA4 Day Surgery Trolley Systems Push / Pull Bar	21390
QA4 Day Surgery Trolley Monitor Shelf c/w Removable Refreshment Tray	21394
QA4 Day Surgery Trolley Refreshment Tray ONLY	21394-A1
QA4P Handset Version 2.2, S/N 551 Onward	69923/2

The complete multi-purpose mobile operating system

Operating Table Accessories



Our comprehensive and competitively-priced range of Operating Table Accessories includes all kinds of positioning devices and operating table attachments.

Many of the items – Supports, Clamps etc – are designed and produced at our manufacturing base in Portsmouth, where members of our engineering and production team ensure that they are all made with the same attention to detail and rigorous quality procedures as the sophisticated trolley and tourniquet systems we are renowned for.

Please ask to see a member of our qualified sales team who will be pleased to discuss your specific requirements.

Guarantee

All of our products are manufactured to a documented in-house quality control procedure, individually inspected and guaranteed against any defects in materials or workmanship.



DESIGN & INNOVATION



MADE IN THE UK



RAPID DELIVERY



For more information on any of our products or service contracts, call:

T +44 (0)1943 878647

sales@aneticaid.com aneticaid.com

Innovative medical technology – practically applied

SPECIALISING IN:

Patient & Surgery Trolley Systems

Operation Table Accessories

Stainless Steel Theatre Furniture

Radiation Protection

Electro-Surgical Accessories

Tourniquet Systems

Fibre Optic Instruments

Service & Maintenance

Anetic Aid Ltd.

Sapper Jordan Rossi Business Park, Otley Road, Baildon BD17 7AX, UK

Document number: 93004/6/12052020



AneticAid