



IMAGING TABLES & ACCESSORIES

- C-Arm Tables
- Urology & Lithotripsy Tables
- Spine Positioning System
- Pain Management Accessories

made in the USA
with US & imported parts





We care

about your healthcare delivery costs so we offer feature-rich, reliable products at a competitive price with an industry leading warranty and service solution.

Perfect for...

- Surgery Centers
- Hospitals/Medical Centers
- Pain Management Facilities
- Ambulatory Surgery Centers
- Private Practice

OAKWORKS® Imaging Tables have the a large height range helping to create safe patient transfers and allowing doctors to stand comfortably while working with smaller patients.

Our large lifting column is very rigid, ensuring rock solid support for fast imaging and procedures. Getting exactly the features you need is easy with a wide range of motions and top designs.

Benefits...

For The Doctor

- Low attenuation carbon fiber table top, with choice of integrated headrest top with face hole or rectangular top
- Rock solid lifting tower for better imaging
- Choose from 5 different motions

For The Patient

- Industry leading height range makes getting on and off the table easy
- Very stable design for greater security
- Table top pad & safety strap included for patient comfort & security

For The Facility

- Low maintenance, all electric design
- FDA listed to ensure safety & compliance
- Excellent customer service support
- Industry leading warranty
3 years parts, 2 years labor



Our Mission

Oakworks® has been providing customers with innovative products, excellent service, and cost effective solutions for over 40 years. Oakworks® Medical has collaborated with leaders in the medical specialties we serve to create cutting edge designs that balance the needs of both patients and practitioners. We are committed to identifying the needs of our customers and providing solutions that are cost effective.

Our state-of-the-art 90,000 square foot factory in Pennsylvania, coupled with our advanced engineering department, allows us to quickly meet the needs of our customers. From custom designed tables that complement new technologies to quick turnarounds on our present product line, Oakworks® is uniquely positioned to meet your needs.

ISO Certification - Know Your Manufacturer

Oakworks® Medical is ISO 13485 certified, enhancing our commitment to the safety and comfort of both therapists and patients. The ISO standard is intended to ensure that medical device manufacturers have the required quality management systems in place to safely design, manufacture and distribute medical devices.

Things to consider when choosing a table:

- What motions do you need the table to do?
- Do you need a rectangular top or integrated headrest top with face hole?
- What is the primary use for your table?
- What is disliked about the current table?
- What is the budget?

FOR MORE
INFORMATION
Visit www.oakworksmed.com

PRODUCTS AT A GLANCE



CFPM400 #75204-T01 Integrated
#75205-T01 Rectangular

FEATURES

Integrated Headrest Carbon Fiber Top: 22" (56cm) wide x 84" (213cm) long
Rectangular Carbon Fiber Top: 24" (61cm) wide x 80" (203cm) long
Hand Control (all motions)
Weight Capacity: 500lb (227kg)
1" (3cm) Radiolucent Table Top Pad
4" (10cm) Casters
Crescent face rest pad (included with Integrated Headrest Top)
Patient Safety Straps (2)
Warranty: 3 years parts, 2 years labor
FDA listed, CE marked, cETLus listed, CB Certificate

OPTIONS *must be ordered with table*

	#
2" (5cm) Table Top Pad Upgrade	73190-T01
5" (13cm) Casters	65427
Foot Control (CFPM400)	75077
Foot Control (CFPM401)	75078
Non-USA electric system (contact us for details)	73134

CFPM401 #75206-T01 Integrated
#75207-T01 Rectangular

MOVEMENTS

CFPM400

Motion 1.....height range 26" - 44" (66-112cm)
Motion 2.....Trendelenburg tilt +15°/-12°
Motion 3.....longitudinal travel 10" (25cm)
Motion 4.....lateral tilt ±15°

CFPM401

Motion 1.....height range 26" - 44" (66-112cm)
Motion 2.....Trendelenburg tilt +15°/-11°
Motion 3.....longitudinal travel 10" (25cm)
Motion 4.....±4" lateral travel



CFPM300 #75208-T01 Integrated
#75209-T01 Rectangular

FEATURES

Integrated Headrest Carbon Fiber Top: 22" (56cm) wide x 84" (213cm) long
Rectangular Carbon Fiber Top: 24" (61cm) wide x 80" (203cm) long
Hand Control (all motions)
Weight Capacity: 500lb (227kg)
1" (3cm) Radiolucent Table Top Pad
4" (10cm) Casters
Crescent face rest pad (included with Integrated Headrest Top)
Patient Safety Straps (2)
Warranty: 3 years parts, 2 years labor
FDA listed, CE marked, cETLus listed, CB Certificate

OPTIONS *must be ordered with table*

	#
2" (5cm) Table Top Pad Upgrade	73190-T01
5" (13cm) Casters	65427
Foot Control (CFPM300)	75074
Foot Control (CFPM301)	75076
Non-USA electric system (contact us for details)	73134

CFPM301 #75211-T01 Integrated
#75212-T01 Rectangular

MOVEMENTS

CFPM300

Motion 1.....height range 26" - 44" (66-112cm)
Motion 2.....Trendelenburg tilt +15°/-12°
Motion 3.....lateral tilt ±15°

CFPM301

Motion 1.....height range 25" - 43" (64-109cm)
Motion 2.....Trendelenburg tilt +15°/-11°
Motion 3.....longitudinal travel 10" (25cm)



CFPMB301 *Bariatric imaging table* #75213-T01 Rectangular

FEATURES

Rectangular Bariatric Top: 24" (61cm) wide x 80" (203cm) long
Hand Control (all motions)
Weight Capacity: 750lb (340kg)
1" (3cm) Radiolucent Table Top Pad
Heavy Duty 5" (13cm) Casters
Patient Safety Straps (2)
Warranty: 3 years parts, 2 years labor
FDA listed, CE marked, cETLus listed, CB Certificate

MOVEMENTS

Motion 1.....height range 26.5" - 44.5" (67-113cm)
Motion 2.....Trendelenburg tilt +15°/-11°
Motion 3.....longitudinal travel 10" (25cm)

OPTIONS

must be ordered with table

	#
2" (5cm) Table Top Pad Upgrade	73190-T01
Foot Control (CFPMB301)	75076
Non-USA electric system (contact us for details)	73134



CFPM100 #55569-T01 Integrated
#60011-T01 Rectangular

FEATURES

Integrated Headrest Carbon Fiber Top: 22" (56cm) wide x 84" (213cm) long
Rectangular Carbon Fiber Top: 24" (61cm) wide x 80" (203cm) long
Foot Control
Weight Capacity: 500lb (227kg)
1" (3cm) Radiolucent Table Top Pad
4" (10cm) Casters
Crescent face rest pad (included with Integrated Headrest Top)
Patient Safety Straps (2)
Warranty: 3 years parts, 2 years labor
FDA listed, CE marked, cETLus listed, CB Certificate

MOVEMENTS

Motion 1.....height range 22" - 40" (56-102cm)

OPTIONS

must be ordered with table

	#
2" (5cm) Table Top Pad Upgrade	73190-T01
5" (13cm) Casters	65427
Non-USA electric system (contact us for details)	73134



PRODUCTS AT A GLANCE



CFPMFXH #56575-T01 Integrated #60009-T01 Rectangular

fixed height imaging table

FEATURES

Integrated Headrest Carbon Fiber Top: 22" (56cm) wide x 84" (213cm) long
Rectangular Carbon Fiber Top: 24" (61cm) wide x 80" (203cm) long
Weight Capacity: 500lb (227kg)
1" (3cm) Radiolucent Table Top Pad
4" (10cm) Casters
Crescent face rest pad (included with Integrated Headrest Top)
Patient Safety Straps (2)
Warranty: 3 years parts, 2 years labor
FDA listed, CE marked, cETLus listed, CB Certificate

MOVEMENTS

Fixed height 37" (94cm), no motion

OPTIONS

must be ordered with table

	#
2" (5cm) Table Top Pad Upgrade	73190-T01
5" (13cm) Casters	65427



DTPM300 #61252-T01 Rectangular

FEATURES

Rectangular Polycarbonate Top: 24" (61cm) wide x 78" (198cm) long
Hand Control (Height, Trendelenburg/Reverse)
Foot Control (Height)
Weight Capacity: 450 lb (204kg)
1" (3cm) Radiolucent Table Top Pad
4" (10cm) Casters
Patient Safety Straps (2)
Warranty: 3 years parts, 2 years labor
FDA listed, CE marked, cETLus listed, CB Certificate

MOVEMENTS

Motion 1.....height range 24" - 40" (61-102cm)
Motion 2..... manual travel top 23" (58cm)
Motion 3.....Trendelenburg tilt $\pm 14^\circ$

OPTIONS

must be ordered with table

	#
2" (5cm) Table Top Pad Upgrade	55192-T01
5" (13cm) Casters	65427
Fixed T-rail: 78" (198cm) Long	73148
Fixed T-rail: Custom Length	73135
Non-USA electric system (contact us for details)	73134



Urology CFUR301 #75214-T01

CFUR401 #75215-T01

FEATURES

Carbon Fiber Top: 23" (58cm) wide x 47" (119cm) long
Hand Control (all motions)
Weight Capacity: 500lb (227kg)
1" (3cm) Radiolucent Table Top Pad
4" (10cm) Casters
Patient Safety Straps (2)
Radiolucent Lateral Extensions (2) attach to T-rail
Radiolucent Patient Transfer Extension (1) attach to end of table
T-rail - full length of top
Urology Bag Hoop (bag not included)
Warranty: 3 years parts, 2 years labor
FDA listed, CE marked, cETLus listed, CB Certificate

MOVEMENTS

CFUR301

Motion 1.....height range 26" - 44" (66-112cm)
Motion 2.....Trendelenburg tilt $\pm 15^\circ$ - 11°
Motion 3..... longitudinal travel 10" (25cm)

CFUR401

Motion 1.....height range 26" - 44" (66-112cm)
Motion 2.....Trendelenburg tilt $\pm 15^\circ$ - 11°
Motion 3..... longitudinal travel 10" (25cm)
Motion 4..... lateral travel $\pm 4"$ (10cm)

OPTIONS

must be ordered with table

	#
5" (13cm) Casters	65427
Foot Control (CFUR301)	75076
Foot Control (CFUR401)	75078
Non-USA electric system (contact us for details)	73134



Lithotripsy/Urology CFLU401 #75216-T01

FEATURES

Carbon Fiber Top: 23" (58cm) wide x 47" (119cm) long
Hand Control (all motions)
Weight Capacity: 500lb (227kg)
1" (3cm) Radiolucent Table Top Pad
5" (13cm) Casters
Patient Safety Straps (2)
Radiolucent Lateral Extensions (4) attach to T-rail
Radiolucent Patient Transfer Extensions (2) attach to end of table
T-rail - full length of top (except in cut-out areas)
Urology Bag Hoop (bag not included)
Warranty: 3 years parts, 2 years labor
FDA listed, CE marked, cETLus listed, CB Certificate

MOVEMENTS

Motion 1.....height range 28" - 46" (71-117cm)
Motion 2.....Trendelenburg tilt $\pm 15^\circ$ - 11°
Motion 3..... longitudinal travel 10" (25cm)
Motion 4..... lateral travel $\pm 4"$ (10cm)

OPTIONS

must be ordered with table

	#
Foot Control (CFLU401)	75078
Non-USA electric system (contact us for details)	73134

CFPM400 & CFPM401

4 Movement Tables



- **Large Adjustable Height Range 26" - 44"**
- 56" Metal Free Imaging Space
- Cost Effective 4 Movement Table
- 500 lbs. Patient Weight Capacity
- **Warranty: 3 years parts, 2 years labor**

CFPM400 #75204-T01 Integrated
#75205-T01 Rectangular

CFPM401 #75206-T01 Integrated
#75207-T01 Rectangular

FEATURES	
Carbon Fiber Top	Integrated Headrest 22" (56cm) wide x 84" (214cm) long
56" Metal free imaging space	Rectangular 24" (61cm) wide x 80" (203cm) long
CFPM400 MOVEMENTS	
Motion 1	Electric Height Range 26" - 44" (66-112cm)
Motion 2	Electric Trendelenburg tilt +15°/-12°
Motion 3	Electric Longitudinal travel 10" (25cm)
Motion 4	Electric Lateral tilt ±15°
CFPM401 MOVEMENTS	
Motion 1	Electric Height Range 26" - 44" (66-112cm)
Motion 2	Electric Trendelenburg tilt +15°/-11°
Motion 3	Electric Longitudinal travel 10" (25cm)
Motion 4	Electric Lateral travel ±4" (10cm)
Controls	Multi-function hand control
Weight Capacity	500 lb (227kg)
Product Weight	475 lb (216kg)
Included Features	1" (3cm) Radiolucent Comfort Foam™ table top pad, 4" (10cm) locking casters, Crescent face rest pad (included with integrated headrest top), patient safety straps (2)
Warranty	3 years parts, 2 years labor
Safety Listings	FDA listed, CE marked, cETLus approved, CB Certificate

OPTIONS <i>must be ordered with table.</i>		#
2" (5cm) Table Top Pad Upgrade	Upgrade from the standard 1" (3cm) pad	73190-T01
5" (13cm) casters	Upgrade from the standard 4" (10cm)	65427
Foot Control (CFPM400)	multi-functional	75077
Foot Control (CFPM401)	multi-functional	75078
Non-USA electric system	Please contact us for order details	73134
ACCESSORIES <i>order any time. See accessories on pages 17-22.</i>		#
Arm Hammock	Use with Integrated Head Rest Top	48751-T01
Carbon Fiber Arm Board (6" wide)	180° Articulation	42585
Carbon Fiber Arm Board (7.5" wide)	180° Articulation	70337
Fluoro Extender	Polycarbonate	33975
Interventional Supine Pillow System	Contoured pad and support wedge pad	69808-T01
Spine Positioning System II	8 piece system	70100-T01
T-rail Clamp	6" (15cm) long rail	63336



RECTANGULAR TOP

CFPM400 & CFPM401

4 Movement Table Features



CFPM400



Motion 1
HEIGHT RANGE 26" - 44"



Motion 2
TRENDLENBURG TILT +15°/-12°



Motion 3
LONGITUDINAL TRAVEL 10"

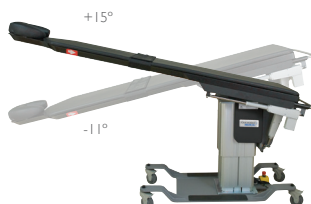


Motion 4
LATERAL TILT $\pm 15^\circ$

CFPM401



Motion 1
HEIGHT RANGE 26" - 44"



Motion 2
TRENDLENBURG TILT +15°/-11°



Motion 3
LONGITUDINAL TRAVEL 10"



Motion 4
LATERAL TRAVEL $\pm 4"$

INCLUDED FEATURES:

Multi-function hand control



(2) Patient Safety Straps

84" L with 24" of hook & loop fasteners at each end



**1 Crescent
face rest pad**
(Integrated
Headrest Top Only)



**4" Locking
Casters**

**1" Comfort Foam™
Table Top Pad**
(2" pad optional)

CFPM300 & CFPM30I

3 Movement Tables



- **Large Adjustable Height Range of 26" - 44"**
- 56" Metal Free Imaging Space
- Cost Effective 3 Movement Table
- 500 lbs. Patient Weight Capacity
- **Warranty: 3 years parts, 2 years labor**

CFPM300 #75208-T01 Integrated
#75209-T01 Rectangular

CFPM30I #75211-T01 Integrated
#75212-T01 Rectangular

FEATURES	
Carbon Fiber Top	Integrated Headrest 22" (56cm) wide x 84" (214cm) long
56" Metal free imaging space	Rectangular 24" (61cm) wide x 80" (203cm) long
CFPM300 MOVEMENTS	
Motion 1	Electric Height Range 26" - 44" (66-112cm)
Motion 2	Electric Trendelenburg tilt +15°/-12°
Motion 3	Electric Lateral tilt ±15°
CFPM30I MOVEMENTS	
Motion 1	Electric Height Range 26" - 44" (66-112cm)
Motion 2	Electric Trendelenburg tilt +15°/-11°
Motion 3	Electric Longitudinal travel 10" (25cm)
Controls	Multi-function hand control
Weight Capacity	500 lb (227kg)
Product Weight	475 lb (216kg)
Included Features	1" (3cm) Radiolucent Comfort Foam™ table top pad, 4" (10cm) locking casters, Crescent face rest pad (included with integrated headrest top), patient safety straps (2)
Warranty	3 years parts, 2 years labor
Safety Listings	FDA listed, CE marked, cETLus approved, CB Certificate

OPTIONS <i>must be ordered with table.</i>		#
2" (5cm) Table Top Pad Upgrade	Upgrade from the standard 1" (3cm) pad	73190-T01
5" (13cm) casters	Upgrade from the standard 4" (10cm)	65427
Foot Control (CFPM300)	multi-functional	75074
Foot Control (CFPM30I)	multi-functional	75076
Non-USA electric system	Please contact us for order details	73134
ACCESSORIES <i>order any time. See accessories on pages 17-22.</i>		#
Arm Hammock	Use with Integrated Head Rest Top	48751-T01
Carbon Fiber Arm Board (6" wide)	180° Articulation	42585
Carbon Fiber Arm Board (7.5" wide)	180° Articulation	70337
Fluoro Extender	Polycarbonate	33975
Interventional Supine Pillow System	Contoured pad and support wedge pad	69808-T01
Spine Positioning System II	8 piece system	70100-T01
T-rail Clamp	6" (15cm) long rail	63336



RECTANGULAR TOP

CFPM300 & CFPM301

3 Movement Table Features



INCLUDED FEATURES:

**Multi-function
hand control**



(2) Patient Safety Straps

84" L with 24" of hook & loop fasteners at each end



**1 Crescent
face rest pad**
(Integrated
Headrest Top Only)



**4" Locking
Casters**

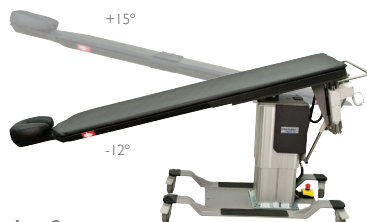
**1" Comfort Foam™
Table Top Pad**
(2" pad optional)

CFPM300



Motion 1

HEIGHT RANGE 26"- 44"



Motion 2

TRENDELENBURG TILT +15°/-12°



Motion 3

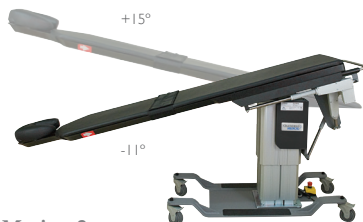
LATERAL TILT ±15°

CFPM301



Motion 1

HEIGHT RANGE 25"- 43"



Motion 2

TRENDELENBURG TILT +15°/-11°



Motion 3

LONGITUDINAL TRAVEL 10"

OAKWORKS®
MEDICAL PRODUCTS

CFPMB301

Electric 3 Movement, 750 lb. Bariatric Rated Imaging Table

- Large Adjustable Height Range **26" - 44"**
- Warranty: 3 years parts, 2 years labor
- Large 24" wide x 80" long carbon fiber top



CFPMB301 #75213-T01

FEATURES	
Carbon Fiber Top 52.5" (133cm) Metal free imaging space	Rectangular 24" (61cm) wide x 80" (203cm) long
Motion 1	Electric Height Range 26" - 44" (66-112cm)
Motion 2	Electric Trendelenburg tilt +15°/-11°
Motion 3	Electric Longitudinal travel 4" (10cm)
Controls	Multi-function hand control
Weight Capacity	750 lb (340kg)
Product Weight	475 lb (216kg)
Included Features	1" (3cm) Radiolucent Comfort Foam™ table top pad, 5" (13cm) locking casters, patient safety straps (2)
Warranty	3 years parts, 2 years labor
Safety Listings	FDA listed, CE marked, cETLus approved, CB Certificate

OPTIONS <i>must be ordered with table.</i>		#
2" (5cm) Table Top Pad Upgrade	Upgrade from the standard 1" (3cm) pad	73190-T01
Foot Control (CFPMB301)	multi-functional	75076
Non-USA electric system	Please contact us for order details	73134



Motion 1
HEIGHT RANGE 26" - 44"



Motion 2
TRENDELENBURG TILT +15°/-11°



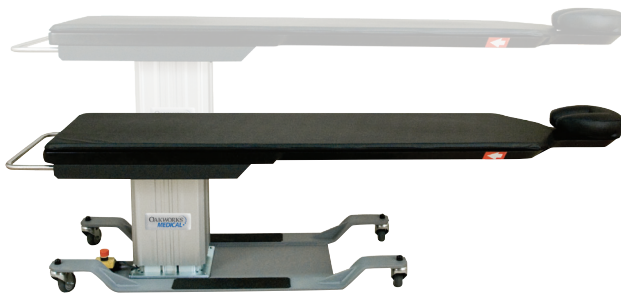
Motion 3
LONGITUDINAL TRAVEL 10"

CFPM100

1 Movement Table



- Our lowest height range table 22" - 40"
- 500 lb. Patient Weight Capacity
- **Warranty: 3 years parts, 2 years labor**



40"

22"

Super low 22" height



RECTANGULAR TOP

INCLUDED FEATURES:

(2) Patient Safety Straps

84" L with 24" of hook & loop fasteners at each end



1 Crescent face rest pad

(Integrated Headrest Top Only)



4" Locking Casters

1" Comfort Foam™ Table Top Pad

(2" pad optional)

CFPM100 #55569-T01 Integrated
#60011-T01 Rectangular

FEATURES		
Carbon Fiber Top 56" (133cm) Metal free imaging space	Integrated Headrest 22" x 84" (56cm x 214cm) Rectangular 24" x 80" (61cm x 203cm)	
Motion 1	Electric 22" - 40" (56-102cm) Height Range	
Controls	Foot control	
Weight Capacity	500 lb (227kg)	
Product Weight	343 lb (216kg)	
Included Features	1" (3cm) Radiolucent Comfort Foam™ table top pad, 4" (10cm) locking casters, crescent face rest pad (included with integrated headrest top), patient safety straps (2)	
Warranty	3 years parts, 2 years labor	
Safety Listings	FDA listed, CE marked, cETLus approved, CB Certificate	
OPTIONS <i>must be ordered with table.</i>		#
2" (5cm) Table Top Pad Upgrade	Upgrade from the standard 1" (3cm) pad	73190-T01
5" (13cm) casters	Upgrade from the standard 4" (10cm)	65427
Non-USA electric system	Please contact us for order details	73134

OAKWORKS®
MEDICAL PRODUCTS

CFPMFXH

Fixed Height Table



- **Great value in full carbon fiber top design**
- **500 lb. Patient Weight Capacity**
- 56" of Metal Free Imaging Area
- **Warranty: 3 years parts, 2 years labor**



RECTANGULAR TOP OPTION

CFPMFXH #56575-T01 Integrated
#60009-T01 Rectangular

FEATURES	
Carbon Fiber Top 56" Metal free imaging space	Integrated Headrest 22" (56cm) wide x 84" (214cm) long Rectangular 24" (61cm) wide x 80" (203cm) long
Height	37" (94cm)
Weight Capacity	500 lb (227kg)
Product Weight	343 lb (155kg)
Included Features	1" (3cm) Radiolucent Comfort Foam™ table top pad, 4" (10cm) locking casters, crescent face rest pad (included with integrated headrest top), patient safety straps (2)
Warranty	3 years parts, 2 years labor
Safety Listings	FDA listed, CE marked, cETLus approved, CB Certificate

OPTIONS must be ordered with table.		#
2" (5cm) Table Top Pad Upgrade	Upgrade from the standard 1" (3cm) pad	73190-T01
5" (13cm) casters	Upgrade from the standard 4" (10cm)	65427

INCLUDED FEATURES:

(2) Patient Safety Straps
84" L with 24" of hook & loop fasteners at each end



1 Crescent face rest pad
(Integrated Headrest Top Only)



4" Locking Casters

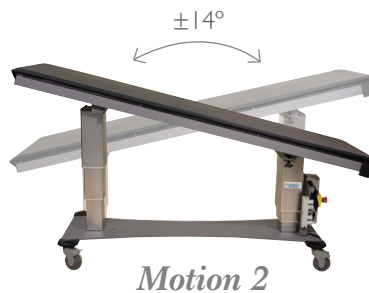
1" Comfort Foam™ Table Top Pad
(2" pad optional)

DTPM300

3 Movement Table



- 23" Longitudinal Travel
- 2 Tower Lift Design
- 40" Open Space Between Towers
- **Warranty: 3 years parts, 2 years labor**



DTPM300 #61252-T01

FEATURES	
Polycarbonate Top	Rectangular 24" (61cm) wide x 78" (198cm) long
Motion 1	Electric Height Range 24" - 40" (61-102cm)
Motion 2	Electric Trendelenburg tilt +14°/-14°
Motion 3	Manual Longitudinal travel 23" (58cm)
Controls	foot control (height) & hand control (height & trendelenburg)
Weight Capacity	450 lb (204kg)
Product Weight	390 lb (177kg)
Included Features	1" (3cm) Radiolucent Comfort Foam™ table top pad, 4" (10cm) locking casters, patient safety straps (2)
Warranty	3 years parts, 2 years labor
Safety Listings	FDA listed, CE marked, cETLus approved, CB Certificate

OPTIONS <i>must be ordered with table.</i>		#
2" (5cm) Table Top Pad upgrade	Upgrade from the standard 1" (3cm) pad	55192-T01
5" (13cm) casters	Upgrade from the standard 4" (10cm)	65427
Fixed T-rail	78" long (198cm)	73148
Fixed T-rail	Custom Length	73135
Non-USA electric system	Please contact us for order details	73134

INCLUDED FEATURES:

(2) Patient Safety Straps
84" L with 24" of hook & loop fasteners at each end



4" Locking Casters

1" Comfort Foam™ Table Top Pad (2" pad optional)



Optional Custom Length Fixed T-rail
Factory installed

OAKWORKS®
MEDICAL PRODUCTS

CFUR30I & CFUR40I

CFUR30I

3 movement

CFUR40I

4 movement

- 3 table extensions included
- 53" metal-free imaging area
- 500 lb. Patient Weight Capacity
- **Warranty: 3 years parts, 2 years labor**



CFUR30I #75214-T01

CFUR40I #75215-T01

STANDARD	
Carbon Fiber Top 53" (135cm) Metal free imaging space with Patient Transfer Extension	23" (58cm) wide x 47" (119cm) long
CFUR30I MOVEMENTS	
Motion 1	Electric Height Range 25.5" - 43.5" (65-110cm)
Motion 2	Electric Trendelenburg tilt +15°/-11°
Motion 3	Electric Longitudinal travel 10" (25cm)
CFUR40I MOVEMENTS	
Motion 1	Electric Height Range 26.5" - 44.5" (67-114cm)
Motion 2	Electric Trendelenburg tilt +15°/-11°
Motion 3	Electric Longitudinal travel 10" (25cm)
Motion 4	Electric Lateral travel ±4" (10cm)
Controls	Multi-function hand control
Weight Capacity	500 lb (227kg) Each Extension: 200 lb (91kg)
Product Weight	CFUR30I 568 lb (258kg) CFUR40I 590 lb (268kg)
Radiolucent Lateral Extension	(2) 5" x 24" (12cm x 61cm)
Radiolucent Patient Transfer Extension	(1) 23" x 28" (58cm x 71cm)
Included Features	1" (3cm) Radiolucent Comfort Foam™ table top pad, 4" (10cm) locking casters, Digital angle gauge, patient safety straps (2), Industry standard full length T-rails on each side, Urology bag hoop
Warranty	3 years parts, 2 years labor
Safety Listings	FDA listed, CE marked, cETLus approved, CB Certificate

OPTIONS must be ordered with table.		#
5" (13cm) casters	Upgrade from the standard 4" (10cm)	65427
Foot Control (CFUR30I)	multi-functional	75076
Foot Control (CFUR40I)	multi-functional	75078
Non-USA electric system	Please contact us for order details	73134
ACCESSORIES order any time. See accessories on pages 17-22		#
Protective Drape	Clear PVC - attaches to T-rail	69390
Radiolucent Lateral Extension	5" x 24" (13cm x 61cm)	66158
Radiolucent Lateral Extension	5" x 14" (13cm x 36cm)	69794

INCLUDED FEATURES:

(3) Radiolucent Extensions

(2) Patient Safety Straps

84" L with 24" of hook & loop fasteners at each end



1" Comfort Foam™ Table Top Pad



4" Locking Casters

Industry Standard Full Length T-rails on each side

The Integrated T-rails are US standard size of .38" (9.7mm) thick by 1.13" (28.7mm) wide.

Digital Angle Gauge

Urology Bag Hoop

Model: Urocatch® with intertrak clamps (Bag not included)

3 Radiolucent Extensions

33" WIDE SUPPORT SURFACE

The two lateral extensions give you the support area you need for patients' arms while maximizing access to the 23" W x 47" L Carbon Fiber Top. Imaging Area 19" W x 24" L (48cm x 61cm)

Radiolucent patient transfer extension creates 53" long metal-free imaging area between the T-rails.



(2) 5" X 24" RADIOLUCENT LATERAL EXTENSIONS #66158



Removable lateral extensions slide & lock on T-rails.

(1) 23" WIDE X 28" LONG RADIOLUCENT PATIENT TRANSFER EXTENSION #66156

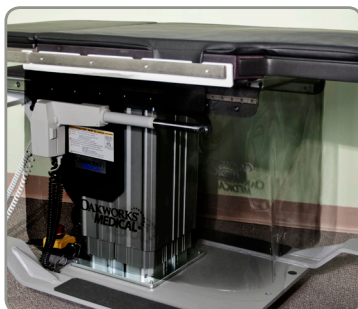


Lightweight design can be used for general imaging when a full length diving board table design is required.

Configure top & extensions to fit the need.



Accessories



Protective Clear PVC Drape #69390

Helps keep clean up to a minimum. Flexible and transparent design maximizes C-Arm positioning possibilities. Clips to T-rail.

CFLU401

4 movement Lithotripsy/Urology Table



- Left and right lithotripter access
- Designed to work with most portable lithotripters and C-Arms
- Rugged design is perfect for mobile or stationary use

CFLU401 #75216-T01

STANDARD	
Carbon Fiber Top 53" (135cm) Metal free imaging space with Patient Transfer Extension	23" (58cm) wide x 47" (119cm) long
Motion 1	Electric Height Range 27.5" - 45.5" (69-114cm)
Motion 2	Electric Trendelenburg tilt +15°/-11°
Motion 3	Electric Longitudinal travel 10" (25cm)
Motion 4	Electric Lateral travel ±4" (10cm)
Controls	Multi-function hand control
Weight Capacity	500 lb (227kg) Each Extension: 200 lb (91kg)
Product Weight	618 lb (280kg)
Radiolucent Lateral Extension	(1) Lateral Extension 8" x 24" (20cm x 60cm) (1) Lateral Extension 8" x 14" (20cm x 36cm) (2) Angled Lateral Extensions 8" x 11" (20cm x 28cm)
Radiolucent Patient Transfer Extensions	(1) End Extension 23" x 28" (58cm x 71cm) (1) Short End Extension 23" x 16" (58cm x 40cm)
Included Features	1" (3cm) Radiolucent Comfort Foam™ table top pad, 5" (13cm) locking casters, Digital angle gauge, patient safety straps (2), Industry standard full length T-rails on each side, Urology bag hoop
Warranty	3 years parts, 2 years labor
Safety Listings	FDA listed, CE marked, eTlus approved, CB Certificate

OPTIONS <i>must be ordered with table.</i>		#
Foot Control (CFLU401)	multi-functional	75078
Non-USA electric system	Call for ordering details	73134
ACCESSORIES <i>order any time. See accessories on pages 17-22.</i>		#
Protective Drape	Clear PVC - attaches to T-Rail	69389

INCLUDED FEATURES:

(6) Radiolucent Extensions

(2) Patient Safety Straps

84" L with 24" of hook & loop fasteners at each end



1" Comfort Foam™ Table Top Pad



Heavy Duty 5" Locking Casters

with directional locks on tower end only.

Industry Standard Full Length T-rails on each side

The Integrated T-rails are US standard size of .38" (9.7mm) thick by 1.13" (28.7mm) wide.

Digital Angle Gauge

Urology Bag Hoop

Model: Urocatch® with intertrak clamps (Bag not included)

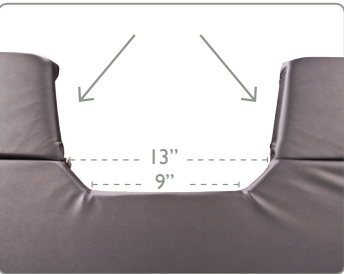
CONVERTS TO FULL
FEATURED UROLOGY
TABLE IN SECONDS!

*Compatible with all leg
holders using the U.S.
standard side Trail
attachment systems.*



**T-RAIL SLIDE &
LOCK LATERAL
EXTENSIONS**

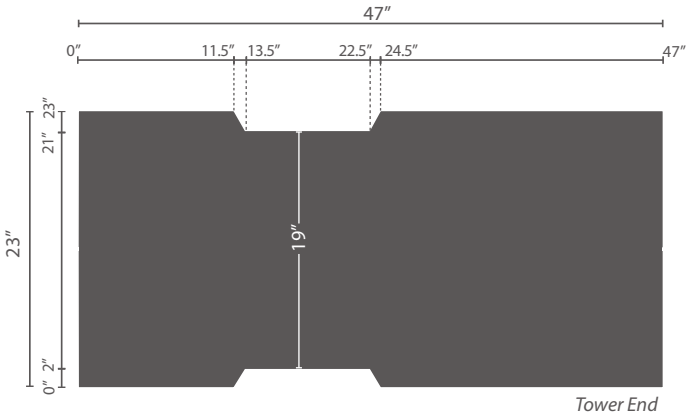
easily lock onto T-rails on
either side of the table.



The two angled lateral
extensions align with the
table's recesses & can be
adjusted along T-rails on
each side.

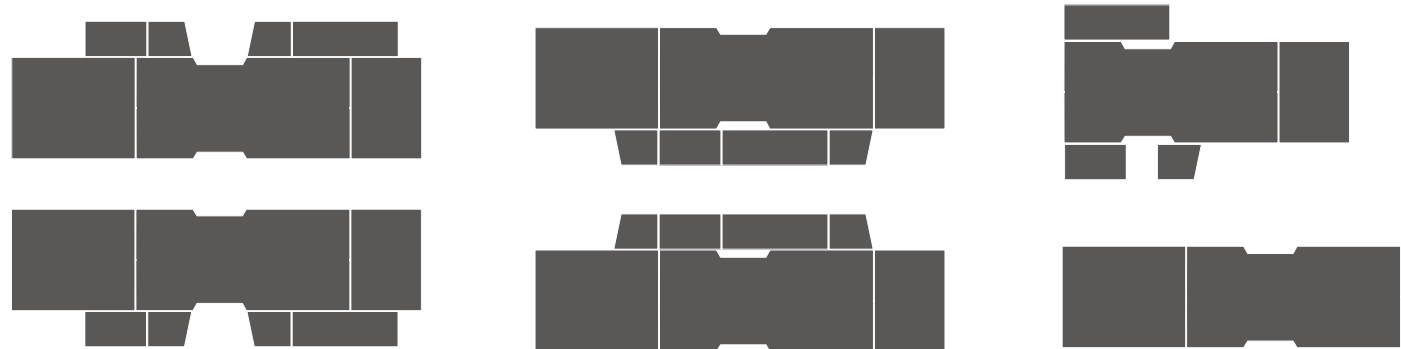
**23" W x 47" L
CARBON FIBER TOP**

Imaging Area 19" W x 23.5" L (48cm x 59cm)



6 RADIOLUCENT EXTENSIONS

Easy to attach & offer many different configurations. Two end extensions and four lateral extensions are included.



SPINE POSITIONING SYSTEM

An integral component of the pain management suite

- **Optimal Imaging**
High radiolucency & flexibility for ideal cervical, thoracic & lumbar visualization.
- **Enhanced Patient Comfort**
Minimize unwanted movement & reduce procedure time.
- **Stable Design**
Large contoured torso pad cradles patient & the strap securely fastens the system to the table.



RADIOLUCENT FRAME

Used to support the Torso support & Crescent face rest pad. One cam lock facilitates cervical flexion & extension.



Adequate free space under see through face section for aeration, supplemental O₂, jaw/face contact as necessary; prevents patient overheating, can more easily communicate with the patient without sound muffling.



STABILIZING STRAP

Secures SPS II to the table.

SPINE POSITIONING SYSTEM II #70100-T01

FEATURES	
Radiolucant Frame with Face Rest	12" x 32.5" (30 x 84cm)
Crescent Face Rest Pad (#62008-T01)	12" (30cm) diameter
Contoured Torso Support Pad	6.5" x 23" x 30" (17 x 58 x 76cm)
Contoured Torso Wedge	2" x 22" x 29" (5 x 56 x 74cm)
Large Adjuster Pad	8" x 22" x 2" (20 x 56 x 5cm)
Small Adjuster Pad	7" x 12" x 1.5" (18 x 30 x 4cm)
8" Semi-Round Bolster	6" x 8" x 26" (15 x 20 x 66cm)
Carry Case	For storage when not in use
Warranty	Fabric, Frame & Padding - 2 years
Safety Listings	FDA listed, CE marked



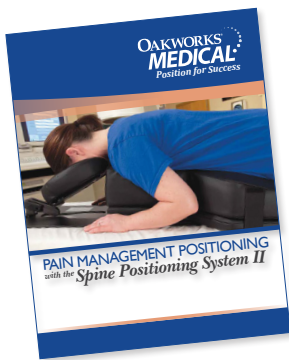
The Spine Positioning System II (SPS II) is an integral component of the pain management fluoroscopy suite. With this system, procedural set up time is reduced, patient comfort is enhanced, & unwanted movement is minimized. Most importantly, the target anatomy is more readily visualized, which allows the physician to perform spine procedures in a more efficient & secure manner.

OAKWORKS® designed the SPS II in an effort to achieve the critical balance between optimal imaging & patient comfort. The radiolucent adjustable frame and versatile padding system provide a metal-free imaging support platform capable of quickly positioning a wide variety of patient physiques. The adjustable face rest position provides individualized positioning for all types of cervical procedures & anatomy. The contoured torso support pad is complimented by a host of uniquely shaped and sized adjuster pads & wedges that enable a multitude of positioning combinations for ideal patient comfort & imaging needs for all spinal column procedures.

The SPS II was designed with the input of experienced interventional spine physicians under the direction of Paul Dreyfuss, MD. An extensive trial period was undertaken such that various modifications were made to accommodate the precise needs of the interventional pain physician & their patients.

PRIMARY ADVANTAGES OF THE SPINE POSITIONING SYSTEM II:

- No metal (radiopaque) components are present under the spine- unobstructed visibility of the entire spine from C0-C1 to the coccyx with all imaging angles (AP, oblique & lateral). All radiopaque components are placed proximal to the forehead.
- Adjustment easily made to maximize opening & imaging of the cervico-thoracic junction.
- Secure & easy to use single locking face rest mechanism to adjust cervical flexion, extension & height.
- Torso pad elevation under the chest allows for the shoulders to drop out of the plane of imaging when obtaining a lower cervical and upper thoracic lateral & oblique views.
- Adequate free space under open air face section for aeration, supplemental O2, jaw/face contact as necessary; prevents patient overheating and easy communication with the patient without sound muffling.
- Contoured torso support allows the shoulders to drop yet be adducted/slightly extended next to the body for comfort where they are also less likely to lose position/fall off the fluoroscopic table.
- Current design obviates the need to pull the arms back to the side to obtain imaging of the cervico-thoracic junction; the more comfortable adducted & slightly extended position suffices.
- Adequate adjuster pads to maximize torso build up for larger frame patients.
- Not only for cervical cases; also useful for thoracic & lumbar cases.
- Comfortable for patients with cervical pain when longer duration thoracic & lumbar cases are performed.
- Softer foam under the breasts and shoulders for comfort; firmer central foam for enhanced stability.
- Wider & longer torso pad gives extra support resulting in less sway and improved patient comfort.
- Torso pad restraint strap secures the pad to the table; more stability when mounting & dismounting the system.
- Torso pad with abdominal recess for extra comfort and support.
- All prone positioning needs met with the SPS II; no need for additional pillows.
- Very firm adjuster wedges prevent undue compression & loss of the original position.



***View the SPSII
catalog for patient
positioning tips***

#65720

THE FOLLOWING SCENARIOS IN FACTITIOUS PATIENTS WILL DEMONSTRATE:

- Various body types using the Spine Positioning System II
- Their positioning and specific configurations of the SPS II used in particular clinical situations
- Various fluoroscopic images of these factitious patients that exemplify the value of the SPS II

PATIENT - LIZ

COMPONENTS USED: Platform Frame, Crescent Face Rest Pad, Contoured Torso Support Pad, Contoured Torso Wedge, 8" Semi-Round Bolster (not pictured)



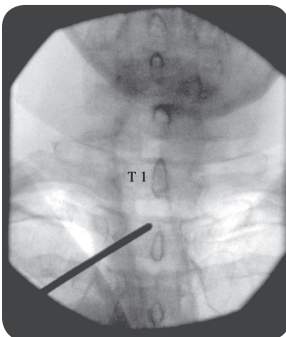
SPS II set up for Liz shown here



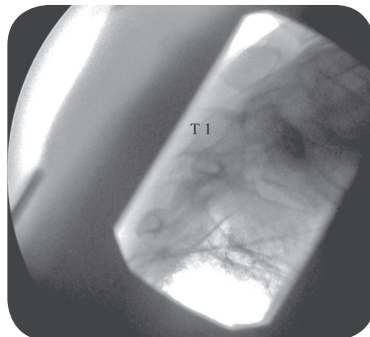
Liz in the SPS II while obtaining an AP image of the upper thoracic spine.



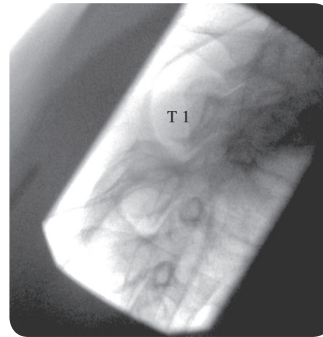
Liz in the SPS II while obtaining a lateral image of the upper thoracic spine.



AP image visualizing the T1-2 interlaminar space.



Lateral image primarily through the C7—T2 segments.



Contralateral oblique showing the upper thoracic facet joints.



SPINE POSITIONING SYSTEM

PATIENT - CARL

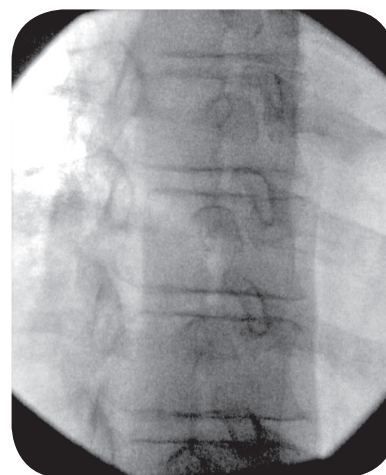
COMPONENTS USED: Platform Frame, Crescent Face Rest Pad, Contoured Torso Support Pad, Contoured Torso Wedge, 8" Semi-Round Bolster (not pictured)



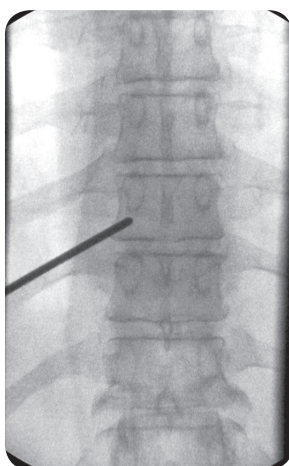
SPS II set up for Carl shown here



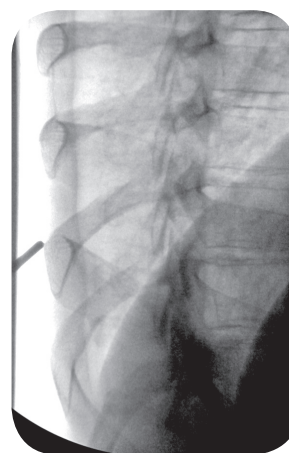
Carl in the SPS II while obtaining an AP image of the mid-thoracic spine



Right thoracic oblique image to visualize the trajectory for a transforaminal injection



AP image of the mid-thoracic spine for planning the trajectory for a left thoracic facet injection



Contralateral oblique showing the trajectory for targeting the mid-thoracic facet joint

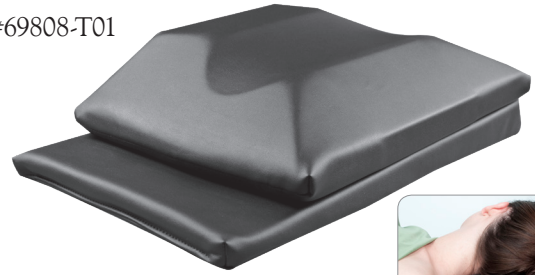
ACCESSORIES

INTERVENTIONAL SUPINE PILLOW SYSTEM #69808-T01

Primarily designed to facilitate cervical transforaminal injections, but useful for other antero-lateral procedures such as facet injections, medial branch blocks, stellate ganglion blocks, scalene injections, brachial plexus blocks and discography.

- Facilitates anterior approaches to cervical procedures
- Creates an unobstructed working space for physicians' hands
- Fully adjustable for both patient and physician needs
- Reusable design is highly radiolucent

Compatible with all tables



FDA listed to regulation #892.1830 – Class I



FLUORO EXTENDER #33975

Made of radiolucent, polycarbonate material, it's organic shape is conducive to a variety of table placement applications.

- 30" long x 23.5" wide x 1/4" thick
- Inserts under the table top pad

Compatible with all imaging tables



FDA listed to regulation #892.1980 – Class I

PATIENT SAFETY STRAP #52115

The Patient Safety Strap helps eliminate unwanted patient movement and injury during surgical procedures. The strap is easily adjusted to accommodate a variety of patient sizes.

- Easily adjusted and repositioned with hook & loop fasteners
- Durable radiolucent material

2 INCLUDED with all Imaging Tables & Urology /Lithotripsy Tables



SINGLE CARBON FIBER ARM BOARD

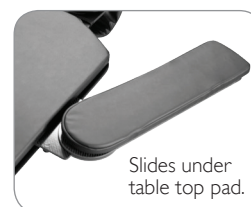
#42585-T01 - 6" wide #70337-T01 - 7.5" wide

Fully radiolucent with a 180° range of motion, the arm board requires no mounting or attachment hardware and simply slides under the table top pad. It can be used on any fluoroscopy table & will support arms and feet in a variety of positioning configurations. Folds for storage.

- 180° range of motion
- Requires no mounting or attachment hardware, slides under table top pad
- Comes with removable pad
- Folds for safe & compact storage

Compatible with all imaging tables

Shown here with removable pad.

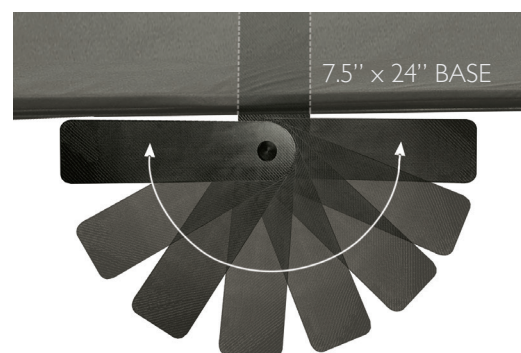


Slides under table top pad.



Folded for storage.

FDA listed to regulation #892.1980 – Class I



6" x 23"
ARM BOARD
or
7.5" x 24"
ARM BOARD

ACCESSORIES

6" ADJUSTABLE T-RAIL CLAMP #63336

The adjustable T-rail clamp can be positioned along the grooved table top edge. Clamp is also removable.

- Accommodates a variety of T-rail attachable accessories
- 150 lb (68kg) weight rating

Available for use on: CFPM tables



FDA listed

ARM HAMMOCK #48751

This unique product will comfortably & easily support your patient's arms when prone. Eliminate the awkward feeling your patients experience by not knowing where to place their arms.

- Easily attached to the Integrated Head Rest table top



CRESCENT FACE REST PAD & COVERS

This radiolucent crescent face rest pad is comfortable for either prone or supine positioning. Use the disposable face rest covers for a hygienic barrier.

Pad is INCLUDED with Integrated Headrest tables. Covers sold separately.

FLAT COVERS
100 PER PACKAGE
#52065 Not FDA Listed.



FITTED COVERS
50 PER BOX
#52067 Not FDA Listed.



FACE REST PAD #56418

COMFORT FOAM™ TABLE TOP PAD

1" INCLUDED with all CFPM & DTPM Imaging tables. 2" optional for an additional charge.
2" pad not available on Urology Tables.



#51343-T01 1" Integrated Head Rest
#55194-T01 2" Integrated Head Rest

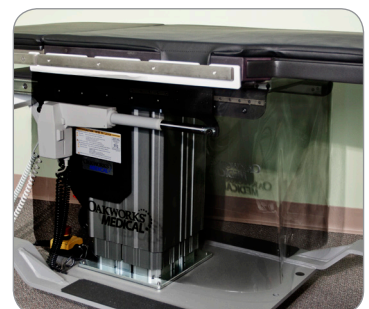
#58940-T01 1" Rectangular Top
#62090-T01 2" Rectangular Top

#33060-T01 1" DTPM300
#55192-T01 2" DTPM300

PROTECTIVE DRAPE #69390 CFUR301 & CFUR401 #69389 CFLU401

The Protective Table Drape is a valuable accessory for your Lithotripsy or Urology table. The Table Drape is an economically effective splash shield, which protects your table's lifting motor and wiring in various facilities environments. This device simply and quickly attaches to the table's standard T-rails located on the sides of the table.

Available on: CFUR301, CFUR401, CFLU401.





Oakwork's is independently certificated to ISO 13485 Quality management system and regulatory requirement for medical devices. This registration certifies that Oakworks, Inc.'s quality system conforms to these requirements in our state-of-the-art 91,000 square foot factory in New Freedom, Pennsylvania.



Please visit our website, www.oakworksmed.com, to view our complete line of tables and accessories for C-arm Imaging, Pain Management, Ultrasound, Urology, Lithotripsy, Exam & Treatment.



Call For More Information

Oakworks Medical 717.235.6807 www.oakworksmed.com

Regulatory Details

All Oakworks® Imaging Tables (including Urology and Lithotripsy Tables) have the following approvals and regulatory compliance: FDA listed to regulation #892.1980 – Class 2; CE marked – to CE Declaration of Conformity to Annex I of the EC Directives 90/385/EEC and 93/42/EEC. Authorization to Mark (ATM) to IEC 60601-1-6 3rd Edition, ATM to ANSI/AAMI ES60601-1 3rd Edition, ATM to CAN/CSA-C22.2 No. 60601-1. ETL Test Reports to IEC/EN 60601-1 3rd Edition, IEC/EN 60601-1-2 3rd Edition, IEC/EN 60601-2-32 1st Edition & IEC 62366 1st Edition.