

ASPECT™

100RTL 100RT 100T & 100E IMAGING TABLES

GI / Interventional Pain Management / Multipurpose Imaging Tables



The *Smart* Choice:

- For GI and interventional pain management procedures
- Choose from tables with 4-way, 3-way, 2-way and elevate only motions
- Choice of three tabletops
- Patient weight capacity: 450 lbs.
- Unobstructed imaging area 59" (150cm)

idi
imagediagnostics.com

INTELLIGENT DESIGN ► TANGIBLE OUTCOMES

Aspect Series C-Arm Imaging Tables 100RTL, 100RT, 100T, and 100E

These tables include your choice of a 22" (56cm) , 24" (61cm) or 28" (71cm) tabletop



Aspect 100RTL

- Motorized elevation
- Lateral Tilt (Roll) $\pm 20^\circ$
- Trendelenburg Tilt $\pm 15^\circ$
- 10" (25cm) Longitudinal Travel



Aspect 100RT

- Motorized elevation
- Lateral Tilt (Roll) $\pm 20^\circ$
- Trendelenburg Tilt $\pm 15^\circ$



Aspect 100T

- Motorized elevation
- Trendelenburg Tilt $\pm 15^\circ$



Aspect 100E

- Motorized elevation

Why Choose IDI's Aspect Series Tables?

- IDI is veteran-owned and has been manufacturing industry-leading imaging tables in the U.S since 1986.
- IDI tables are well built, reliable, simple-to-use and repair.
- Very large unencumbered imaging areas: 59" – 66" (150 – 168 cm), depending on model.
- Only IDI tables include battery backup operation! Continue use during power failures.
- No leaky hydraulics! All IDI tables use reliable electro-mechanical motion controls and operation.
- Low profile wheel base design and robust lift column for:
 - ✓ Excellent stability and safety.
 - ✓ Very low table weight for reduced freight shipment costs, easy maneuverability: 290 – 380 lbs. (132 – 172 kg), depending on model.
 - ✓ Long base provides protection from collisions that can damage carbon fiber tabletop.
 - ✓ 450 lb. (204kg) "true" patient weight capacity; based on real patient positioning and over the entire range of tabletop positions.
 - ✓ Enclosed, easy-to-clean base and covers.
- High-quality carbon fiber tabletops and tabletop pads for excellent fluoroscopic imaging with minimal x-ray attenuation.
- Three tabletop sizes/shapes to satisfy application-specific clinical requirements.
- Highest quality components for exceptional durability and reliability.
- Three year parts warranty. One year labor warranty.

Image Diagnostics

Since 1986, IDI has been a manufacturer of innovative products for surgical, interventional and diagnostic imaging.

Our product focus is in electro-mechanical solutions for fluoroscopic and digital radiographic applications.

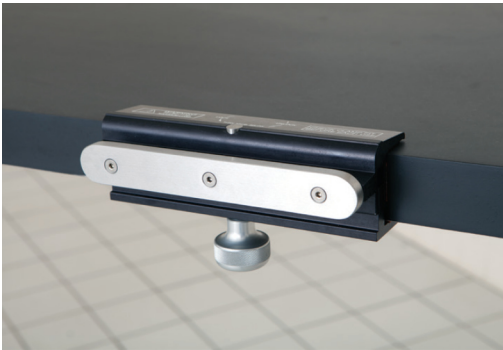
IDI is committed to superior product design, value and customer support in everything we do.



Aspect 100RTL shown with IDI's iIex video integration system

Key table accessories

See IDI Table Accessories Catalog for complete accessory options



Clamp-on Accessory Rail

For mounting arm board and other rail-mounted accessories.

Cat. # A100-1007



Arm board

Quick release, rail-mounted

Cat. # A310-056



Scatter-Guard Radiation Draping

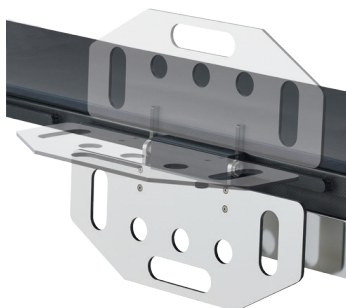
Cat. # A610-096
for X100-995 tabletop
Cat. # A610-092
for X100-733 tabletop



Radiation Shield

For Aspect 100T, 100RT and 100RTL tables

Cat. # A610-080



Multi-position Arm Support

Arm rest, removable, tilting
Provides secure patient support.

Cat. # C000-1180

Aspect 100RTL, 100RT, 100T and 100E

GI / Interventional Pain Management / Multipurpose Imaging Table Specifications

Model Number	Aspect 100RTL	Aspect 100RT	Aspect 100T	Aspect 100E
Elevate (tabletop to floor)	31.2 - 41.2" 79 – 105 cm	30.4 - 42.2" 77 – 107 cm	28 - 39.8" 71 – 101 cm	27 - 38.8" 68 – 98 cm
Trendelenburg Tilt	±15°	±15°	±15°	NA
Lateral Roll	20°	20°	NA	NA
Longitudinal Tabletop Motion	10" 25cm	NA	NA	NA
Standard Tabletop Size	24" x 80" 61 x 203 cm	24" x 80" 61 x 203 cm	24" x 80" 61 x 203 cm	24" x 80" 61 x 203 cm
Optional Tabletop Size	22" x 80" 56 x 203 cm	22" x 80" 56 x 203 cm	22" x 80" 56 x 203 cm	22" x 80" 56 x 203 cm
Custom Tabletop Size	28"x 80" 71 x 203 cm	28" x 80" 71 x 203 cm	28" x 80" 71 x 203 cm	28" x 80" 71 x 203 cm
Imaging Area	59" 150 cm	62" 157 cm	62" 157 cm	66" 168 cm
Patient Capacity	450 lbs. 204 kg	450 lbs. 204 kg	450 lbs. 204 kg	450 lbs. 204 kg
Table Weight	355 lbs. 161 kg	380 lbs. 172 kg	325 lbs. 147 kg	290 lbs. 132 kg

Standard (S) and Optional (O) Accessories

Tabletop Pad 2" thick	S	S	S	S
Hand Control	S	S	S	S
Facial Support Pad	S	S	S	S
Restraint Straps	S	S	S	S
Casters 5"	S	S	S	S
Armboard, rail mounted	O	O	O	O
Armboard, shoulder mount	O	O	O	O
Table-Mounted Radiation Shield	O	O	O	O
Foot Control	O	O	O	O
Clamp-on Accessory Rail	O	O	O	O

Tabletop Options

Standard Top

Cat. # X100-995

24" x 80" (61cm x 203 cm)

Optional Top

Cat. # X100-733

22" x 80" (56 cm x 203 cm) with facial cutout

Custom Top

Cat. # X100-1325

28" x 80" (71 cm x 203cm)
For larger patients



Image Diagnostics, Inc. 310 Authority Drive Fitchburg, MA 01420 Tel: 978-829-0009
A veteran-owned company since 1986. Designed and manufactured in the U.S.
Image Diagnostics, Inc. reserves the right to update product specifications without notification.
*Warranty information for IDI products is available upon request from Image Diagnostics, Inc.
All trademarks are the property of Image Diagnostics, Inc. unless otherwise stated.
Patents granted or pending. L100-2924C

